

SERIES 89 NANOMINIATURE Threaded and Breakaway Nano Circulars



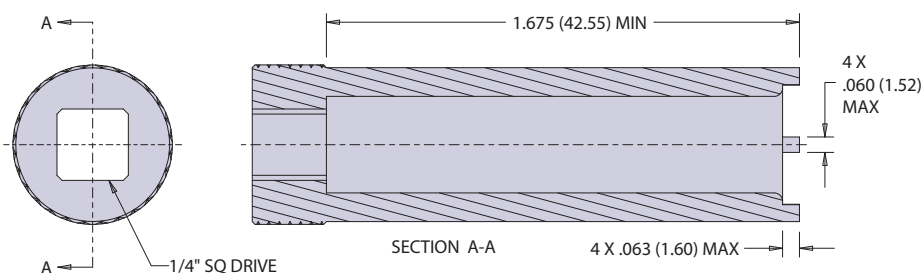
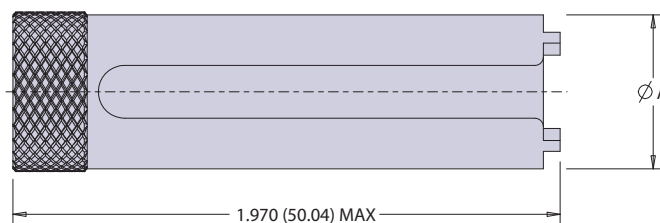
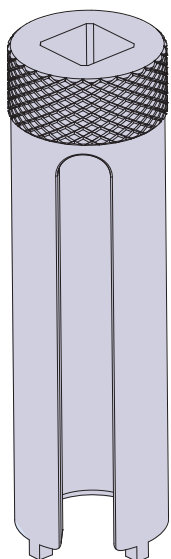
600-190 1/4" Square Drive Spanner Nut Socket Drive for Front Panel Mount Connectors



1/4" Socket Drive for use with front panel mount nano circular connectors. Alloy steel construction and nickel plated. Order by insert arrangement individually or in a kit

HOW TO ORDER		
Sample Part Number	600-190	-KIT
Series	600-190 = Spanner Nut Wrench, Nano Front Panel Mount	
Shell Size/ Contact Arrangement	See Table I	

TABLE I				
DASH	INSERT ARRANGEMENT	ØA MAX	SPANNER NUT THREAD SIZE REF	RECOMMENDED TORQUE IN-LB
-01	4/7	.497 (12.62)	M8.5	35 MAX (3954 N-mm)
-02	19	.537 (13.64)	M9.5	35 MAX (3954 N-mm)
-03	37	.577 (14.66)	M10.5	45 MAX (5084 N-mm)
-04	44/55	.637 (16.18)	M12	45 MAX (5084 N-mm)
-KIT	ALL DASH NUMBER TOOLS SUPPLIED			



THREADED AND BREAKAWAY NANO CIRCULARS