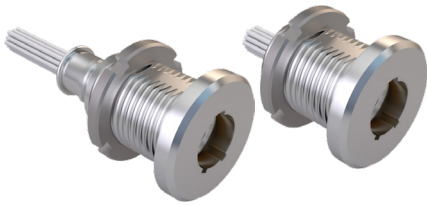


SERIES 89 NANOMINIATURE Threaded and Breakaway Nano Circulares



892-000 Front Panel Mount, Breakaway Receptacle with Insulated Wire

THREADED AND BREAKAWAY NANO CIRCULARS



Glenair Front Panel Mount Breakaway Receptacle Connectors feature gold alloy contacts, offering premium performance and reliability for demanding applications. Available with or without backshell. Backshell option available with shrink boot or overmolding. Choose Aluminum or Stainless Steel Shells in 6 layouts from 4 to 55 contacts. These connectors are intermateable with Nano Miniature plug connectors 892-007.

HOW TO ORDER

Sample Part Number	892	-000	-02	1-7	N	A2	-0	A	7	-12
Series	892 = Nano Circular with Insulated Wire									
Shell Style	000 = Front Panel Mount Breakaway Receptacle									
Accessory	01 = No Backshell		02 = With Backshell							
	03 = Overmolded		04 = Shrink Boot							
Shell Size/ Contact Arrangement	1-4 = Shell Size 1 with 4 contacts		3-37 = Shell Size 3 with 37 contacts							
	1-7 = Shell Size 1 with 7 contacts		4-44 = Shell Size 4 with 44 contacts							
	2-19 = Shell Size 2 with 19 contacts		4-55 = Shell Size 4 with 55 contacts							
	See Receptacle Mating Face View and Contact Layout Table									
Polarization	N = Normal				A = Alternate					
Shell Material/Finish	A2 = Aluminum/Electroless Nickel				S1 = Stainless Steel/Zinc Cobalt (Black)					
	A5 = Aluminum/Gold Over Nickel				S2 = Stainless Steel/Passivated					
Wire Gauge	0 = 30 AWG (Wire Types A, B, C, E, and F)				2 = 32 AWG (Wire Type B Only)					
Wire Type	A = Ultra lightweight XLETFE insulation, silver coated ultra high strength copper B = Extruded PTFE insulation, silver coated copper NEMA HP-ETX (MIL-W-16878/6) C = Crosslinked modified ETFE insulation, silver coated high strength copper, SAE AS22759/33 E = Crosslinked modified ETFE insulation, low fluoride, lightweight, silver-coated high strength copper alloy, SAE AS22759/51 F = Crosslinked modified ETFE insulation, low fluoride, lightweight, silver-coated copper, SAE AS22759/52									
Wire Color	1 = White		2 = Yellow		7 = 10 Color Repeating (Wire Type A is striped, Types B, C, E, and F are solid colors)					
Wire Length (Inches)	12 = 12.00 + 1.00 Inches; as required in one inch increments.									

CIRCULAR RECEPTACLE MATING FACE VIEW AND CONTACT LAYOUT (POSITION IDENTIFICATIONS NOT MARKED ON PART)

Size 1-4 4 Contacts	Size 1-7 7 Contacts	Size 2-19 19 Contacts	Size 3-37 37 Contacts	Size 4-44 44 Contacts	Size 4-55 55 Contacts

PERFORMANCE SPECIFICATIONS

Contact Spacing: .025" (0.64) contact centers
Wire Accommodation: #30-#32 AWG
Current Rating: 1 AMP maximum tested per EIA-364-70
DWV: 250 VAC RMS sea level, 100 VAC RMS 70,000 feet per EIA-364 Procedure 20
Insulation Resistance: 5000 Megohms minimum test voltage 100 VDC, per EIA-364 Procedure 21

Operating Temperature: -55° C. to +125° C.
Contact Resistance: 71 millivolt drop maximum, 1 AMP current, any catalog supported wire type
Vibration: 20 g's, IAW EIA-364-28, Condition IV
Shock: 100 g's, IAW EIA-364-27, Condition G
Durability: 200 mating cycles per test procedure EIA-364-09

Corrosion Resistance: 48 hours salt spray IAW EIA-364-26, Condition B
Humidity: 240 hours, IAW EIA-364-31, Test Condition B
Contact Engaging/Separation Force: 5 ounce maximum, 0.4 ounce minimum
Thermal Vacuum Outgassing: Total mass loss (TML) 1.0% max., volatile condensable material (VCM) 0.1% max. IAW ASTM E595

SERIES 89 NANOMINIATURE Threaded and Breakaway Nano Circulares

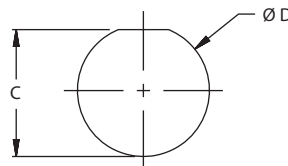


892-000 Front Panel Mount, Breakaway Receptacle with Insulated Wire

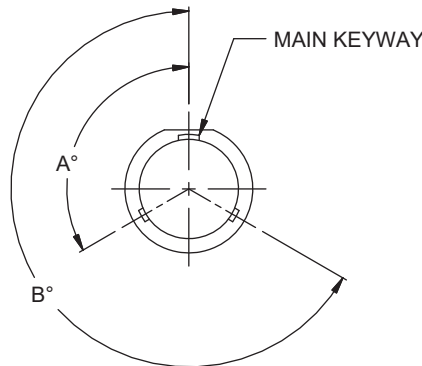
THREADED AND BREAKAWAY NANO CIRCULARS

DIMENSIONS			
892-000-01 Without Termination Platform		892-000-02 With Termination Platform	
<p>WIRE LENGTH +1.00/-0.00 (+25.4/-0.0)</p> <p>.530 +/- .005 (13.5 ±0.1)</p> <p>.080 +/- .005 (2.0 ±0.1)</p> <p>Ø A TYP</p> <p>B THREAD</p> <p>.385 (9.8) MAX PANEL THICKNESS</p> <p>MATING FACE</p> <p>.045 (1.1) MIN PANEL THICKNESS</p>		<p>WIRE LENGTH +1.00/-0.00 (+25.4/-0.0)</p> <p>.820 (20.8) MAX</p> <p>SHIELD OVERMOLD/SHRINK BOOT TERMINATION PLATFORM BACKSHELL</p>	
SIZE	Ø A ±.005 (±0.13)	B THREAD	MOUNTING NUT TORQUE
1-4	.489 (12.42)	M8.5 X 0.75-6g	35 in-lb max (3954 N-mm)
1-7	.489 (12.42)	M8.5 X 0.75-6g	35 in-lb max (3954 N-mm)
2-19	.528 (13.41)	M9.5 X 0.75-6g	35 in-lb max (3954 N-mm)
3-37	.567 (14.40)	M10.5 X 0.75-6g	45 in-lb max (5084 N-mm)
4-44	.627 (15.93)	M12.0 X 0.75-6g	45 in-lb max (5084 N-mm)
4-55	.627 (15.93)	M12.0 X 0.75-6g	45 in-lb max (5084 N-mm)

FRONT PANEL MOUNT CUT-OUT		
Size	C +.002 / -.001 (+0.05/-0.00)	ØD +.002 / -.001 (+0.05/-0.00)
1-4	.320 (8.13)	.340 (8.64)
1-7	.320 (8.13)	.340 (8.64)
2-19	.359 (9.12)	.380 (9.65)
3-37	.399 (10.13)	.420 (10.67)
4-44	.457 (11.61)	.479 (12.17)
4-55	.457 (11.61)	.479 (12.17)



KEYWAY POSITIONS			
Size	Polarization	A°	B°
1-4	N	150	210
	A	75	210
1-7	N	95	230
	A	140	275
2-19	N	150	210
	A	75	210
3-37	N	150	210
	A	75	210
4-44	N	150	210
	A	75	210
4-55	N	95	230
	A	140	275



NOTES

- Material and finish shell and backshell:
 - A2: aluminum alloy, electroless nickel plated per SAE-AMS-2404, Class 3 or 4, Grade B
 - A5: aluminum alloy, gold plate per ASTM B488, Type I, Code C, over electroless nickel per ASTM B733 SC 2, Type IV, Class 4
 - S1: 300 Series stainless steel per ASTM A276, zinc cobalt (black) plating per ASTM B840 Gr 6, Type D, over nickel strike (not recommended for bonding resistance requirements)
 - S2: 300 Series stainless steel per ASTM A276, passivated IAW SAE AMS 2700
 - Insulator: liquid crystal polymer (LCP), per MIL-M-24519 GLCP-30F, 30% glass-filled
 - Contacts: gold alloy/unplated
 - Wire: see part number development
 - O-rings: fluorosilicone
 - EMI spring: SST / gold plated
- Inspect and test per MIL-DTL-32139
- Replacement Parts and tools:
 - Mounting nut: 899-019
 - Panel O-ring: 899-020
 - Internal O-ring: 899-021
 - EMI spring: 899-022
 - Front panel mount, spanner nut wrench: 600-190