

SERIES 89 NANOMINIATURE Threaded and Breakaway Nano Circulars



893-008 Rear Panel Mount, Breakaway Receptacle with PC Tails



Glenair Rear Panel Mount Breakaway Receptacle Connectors feature gold alloy contacts, offering premium performance and reliability for demanding applications. Aluminum or Stainless Steel Shells in 6 layouts from 4 to 55 contacts. Connector intermateable with Nano Miniature 892-007 plug connector. Pre-Tinned PC Tails coated with Sn63Pb37 or Sn60Pb40 tin-lead for excellent solderability.

THREADED AND BREAKAWAY NANO CIRCULARS

HOW TO ORDER	
Sample Part Number	893 -008 -1-7 N A2 -0 D3 -S1
Series	893 = Nano Circular with PC Tails
Shell Style	008 = PCB Termination, Rear Panel Mount Breakaway Receptacle
Shell Size/Contact Arrangement	1-4 = Shell Size 1 with 4 contacts 3-37 = Shell Size 3 with 37 contacts 1-7 = Shell Size 1 with 7 contacts 4-44 = Shell Size 4 with 44 contacts 2-19 = Shell Size 2 with 19 contacts 4-55 = Shell Size 4 with 55 contacts See Receptacle Mating Face View and Contact Layout Table
Polarization	N = Normal A = Alternate
Shell Material/Finish	A2 = Aluminum/Electroless Nickel S1 = Stainless Steel/Zinc Cobalt (Black) A5 = Aluminum/Gold Over Nickel S2 = Stainless Steel/Passivated
Wire Gauge	0 = 30 AWG
Wire Type	D3 = Single Strand Copper Alloy Wire Uninsulated, Pre-tinned
PC Tail Length (inches)	S1 = .080" Straight Lead S2 = .110" Straight Lead S3 = .140" Straight Lead S4 = .170" Straight Lead

RECEPTACLE MATING FACE VIEW AND CONTACT LAYOUT (POSITION IDENTIFICATIONS NOT MARKED ON PART)					
Size 1-4 4 Contacts	Size 1-7 7 Contacts	Size 2-19 19 Contacts	Size 3-37 37 Contacts	Size 4-44 44 Contacts	Size 4-55 55 Contacts

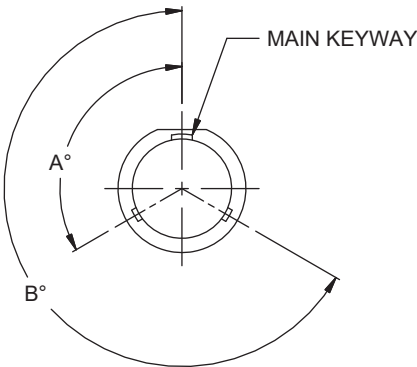
PERFORMANCE SPECIFICATIONS
Contact Spacing: .025" (0.64) contact centers
Current Rating: 1 AMP maximum tested per EIA-364-70
DWV: 250 VAC RMS sea level, 100 VAC RMS 70,000 feet per EIA-364 Procedure 20
Insulation Resistance: 5000 Megohms minimum test voltage 100 VDC, per EIA-364 Procedure 21
Operating Temperature: -55° C. to +125° C.
Contact Resistance: 71 millivolt drop maximum, 1 AMP current, any catalog supported wire type
Vibration: 20 g's, IAW EIA-364-28, Condition IV
Shock: 100 g's, IAW EIA-364-27, Condition G
Durability: 200 mating cycles per test procedure EIA-364-09
Corrosion Resistance: 48 hours salt spray IAW EIA-364-26, Condition B
Humidity: 240 hours, IAW EIA-364-31, Test Condition B
Contact Engaging/Separation Force: 5 ounce maximum, 0.4 ounce minimum
Thermal Vacuum Outgassing: Total mass loss (TML) 1.0% max., volatile condensable material (VCM) 0.1% max. IAW ASTM E595

- NOTES**
- Material and finish shell and spanner nut:
 - A2: aluminum alloy, electroless nickel plated per SAE-AMS-2404, Class 3 or 4, Grade B
 - A5: aluminum alloy, gold plate per ASTM B488, Type I, Code C, over electroless nickel per ASTM B733 SC 2, Type IV, Class 4
 - S1: 300 Series stainless steel per ASTM A276, zinc cobalt (black) plating per ASTM B840 Gr 6, Type D, over nickel strike (not recommended for bonding resistance requirements)
 - S2: 300 Series stainless steel per ASTM A276, passivated IAW SAE AMS 2700
 - Insulator and lead organizer: liquid crystal polymer (LCP), per MIL-M-24519 GLCP-30F, 30% glass-filled
 - Pre-tinned PC tails: copper alloy wire coated with Sn63Pb37 or Sn60Pb40 tin-lead
 - Contacts: gold alloy/unplated
 - EMI Spring: stainless steel/gold plate
- Inspect and test per MIL-DTL-32139
 - Replacement parts and tools:
 - Internal O-ring: 899-021
 - EMI spring: 899-022
 - Mounting nut: 899-019
 - Panel O-ring: 899-020
 - Rear panel mount spanner nut wrenches: 600-189

SERIES 89 NANOMINIATURE Threaded and Breakaway Nano Circulars

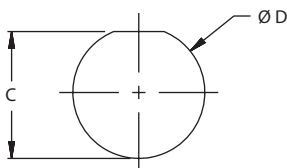


893-008 Rear Panel Mount, Breakaway Receptacle with PC Tails



KEYWAY POSITIONS

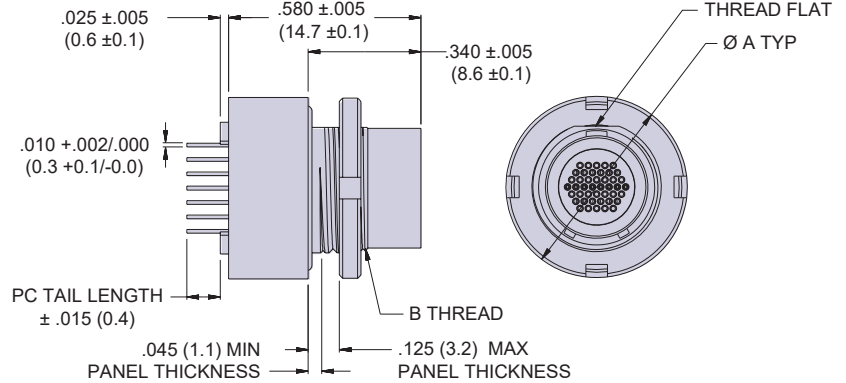
Size	Polarization	A°	B°
1-4	N	150	210
	A	75	210
1-7	N	95	230
	A	140	275
2-19	N	150	210
	A	75	210
3-37	N	150	210
	A	75	210
4-44	N	150	210
	A	75	210
4-55	N	95	230
	A	140	275



REAR PANEL MOUNT PANEL CUT-OUT

Size	C +.002 / -.001 (+0.05/-0.00)	ØD +.002 / -.001 (+0.05/-0.00)
1-4	.260 (6.60)	.280 (7.11)
1-7	.260 (6.60)	.280 (7.11)
2-19	.318 (8.08)	.340 (8.64)
3-37	.361 (9.17)	.378 (9.60)
4-44	.401 (10.19)	.420 (10.67)
4-55	.401 (10.19)	.420 (10.67)

DIMENSIONS



Size	Ø A ±.005 (+/-0.13)	B Thread	Mounting Nut Torque
1-4	.429 (10.90)	M7.0 x 0.75 - 6g	13 in-lb max (1469 N-mm)
1-7	.429 (10.90)	M7.0 x 0.75 - 6g	13 in-lb max (1469 N-mm)
2-19	.488 (12.40)	M8.5 x 0.75 - 6g	35 in-lb max (3954 N-mm)
3-37	.528 (13.41)	M9.5 x 0.75 - 6g	35 in-lb max (3954 N-mm)
4-44	.567 (14.40)	M10.5 x 0.75 - 6g	45 in-lb max (5084 N-mm)
4-55	.567 (14.40)	M10.5 x 0.75 - 6g	45 in-lb max (5084 N-mm)

PCB FOOTPRINTS

Size 1-4	Size 3-37
Size 1-7	Size 4-44
Size 2-19	Size 4-55

THREADED AND BREAKAWAY NANO CIRCULARS