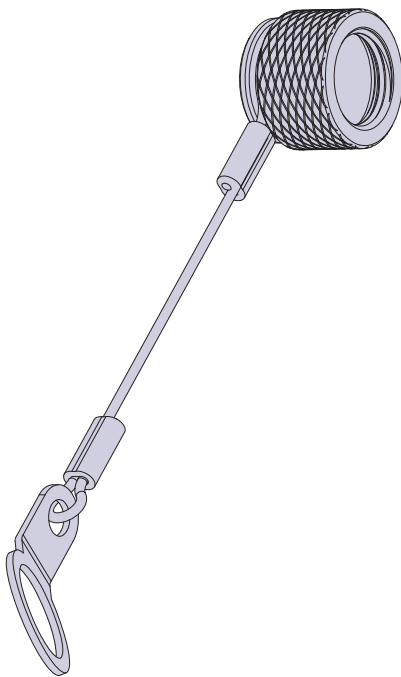
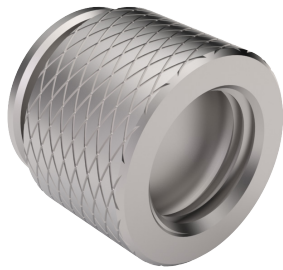


# SERIES 89 NANOMINIATURE Threaded and Breakaway Nano Circulares



## 899-013 EMI Cover for Threaded Receptacles

THREADED AND BREAKAWAY NANO CIRCULARS



**Threaded EMI Covers** offer the same EMI protection as mated connectors, from electro-magnetic interference, as a result of electromagnetic induction emitted from intended external sources such as radio transmissions or electromagnetic radiation from unintentional sources such as electric power transmission lines. Threaded receptacle covers are available in aluminum or stainless steel and provide EMI protection of hardware and equipment while Series 89 circular threaded connectors are demated.

HOW TO ORDER						
<b>Sample Part Number</b>	<b>899-013</b>	<b>-2-19</b>	<b>A2</b>	<b>F</b>	<b>2</b>	<b>-21</b>
<b>Series</b>	899-013 = Nano Miniature Circular EMI Cover for Threaded Receptacles					
<b>Shell Size/ Contact Arrangement</b>	1-4, 1-7, 2-19, 3-37, 4-44, 4-55 See Table I					
<b>Cover Material And Finish</b>	A2 = Aluminum Cover, Electroless nickel plating A5 = Aluminum Cover, Gold Over Nickel Plating S1 = Stainless Steel, Zinc/Cobalt (Black) S2 = Stainless Steel, Passivated					
<b>Attachment Cord</b>	N = No Lanyard F = Stainless Steel Wire Rope, Ø.034, Nylon Jacket, Black G = Flexible Nylon Cord, Ø1/16", Black					
<b>Attachment Length</b>	Attachment length in inches ±.25 (Omit for no lanyard)					
<b>Termination Type</b>	See Attachment Termination Table for code (Omit for no lanyard)					

TABLE I: SHELL SIZE		
SIZE	A	B THREAD
1-4	.425 (10.80)	M7.0 X 0.75-6H
1-7	.425 (10.80)	M7.0 X 0.75-6H
2-19	.475 (12.07)	M8.5 X 0.75-6H
3-37	.526 (13.36)	M9.5 X 0.75-6H
4-44	.558 (14.17)	M10.5 X 0.75-6H
4-55	.558 (14.17)	M10.5 X 0.75-6H

TABLE II: LUG TERMINATION		
DASH	ID	OD
-1	.098 (2.49)	.300 (7.62)
-2	.126 (3.20)	.300 (7.62)
-3	.140 (3.56)	.300 (7.62)
-4	.156 (3.96)	.300 (7.62)
-5	.167 (4.24)	.300 (7.62)
-6	.188 (4.78)	.300 (7.62)
-7	.197 (5.00)	.300 (7.62)
-8	.223 (5.66) .218 (5.54)	.300 (7.62)

TABLE III: SOLID RING TERMINATION				
DASH	ID	OD	FPM SIZE	RPM SIZE
-20	.284 (7.21)	.392 (9.96)	N/A	1-4, 1-7
-21	.343 (8.71)	.451 (11.46)	1-4,1-7	2-19
-22	.382 (9.70)	.490 (12.45)	2-19	3-37
-23	.422 (10.72)	.530 (13.46)	3-37	4-44, 4-55
-24	.480 (12.19)	.588 (14.94)	4-44,4-55	N/A

Note: FPM = front panel mount, RPM = rear panel mount. The sizes shown are the shell size and arrangement for the connector(s) that fit the solid ring terminal. Use the solid ring option for attaching the EMI cover lanyard to the connector under the panel mount flange or spanner nut.

# SERIES 89 NANOMINIATURE Threaded and Breakaway Nano Circulars



## 899-013 EMI Cover for Threaded Receptacles

ATTACHMENT TERMINATION TABLE		
Termination Code	Description	Style
-00	No termination	
-01 Thru -08 See Table II	Lug termination stainless steel, passivated	
-SCS Type "G" Nylon Cord Only	Slip crimp sleeve Provides "slip knot" adjustment. May be crimped for permanent attachment	
-20 Thru -24 See Table III	Solid ring stainless steel, black chromate over zinc cobalt Match closest ID to connector panel cutout dia	
-CF	Crimp ferrule supplied loose for customer termination	

THREADED AND BREAKAWAY NANO CIRCULARS

