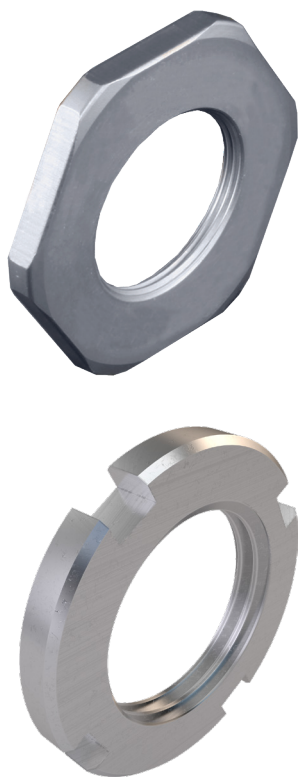


# SERIES 89 NANOMINIATURE Threaded and Breakaway Nano Circulars



## 899-019 Nano Circular, Replacement Hex or Spanner Nut



**Hex or Spanner Mounting Nuts** replace lost or damaged Nano Circular mounting nuts. Available in Hex or Spanner nut styles. Aluminum or stainless steel options for front or rear panel mount connectors.

HOW TO ORDER					
<b>Sample Part Number</b>	<b>899-019</b>	<b>-S</b>	<b>-1</b>	<b>F</b>	<b>-A2</b>
<b>Series</b>	899-019 = Nano Circular Replacement Mounting Nut				
<b>Style</b>	H = Hex nut S = Spanner nut (standard)				
<b>Shell Size</b>	1, 2, 3, 4				
<b>Mounting</b>	F = Front panel mount R = Rear panel mount				
<b>Material/Finish</b>	A2 = Aluminum, electroless nickel plating A5 = Aluminum, Gold over nickel plating S1 = Stainless steel, zinc cobalt (black) plating S2 = Stainless steel, passivated				

DIMENSIONS								
Thread	Front Panel Mount		Rear Panel Mount		Spanner OD	Hex Flats	Hex Wrench	Torque In-Lb
	Shell Size	Spanner Wrench	Shell Size	Spanner Wrench				
M7.0 X .75-6H	N/A	N/A	1	600-189-01	.429 (10.90)	.427 (10.85)	11 mm	13 MAX (1469 N-mm)
M8.5 X .75-6H	1	600-190-01	2	600-189-02	.489 (12.42)	.506 (12.85)	13 mm	35 MAX (3954 N-mm)
M9.5 X .75-6H	2	600-190-02	3	600-189-03	.528 (13.41)	.545 (13.84)	14 mm	35 MAX (3954 N-mm)
M1.5 X .75-6H	3	600-190-03	4	600-189-04	.567 (14.40)	.585 (14.86)	15 mm	45 MAX (5084 N-mm)
M12.0 X .75-6H	4	600-190-04	N/A	N/A	.627 (15.93)	.624 (15.85)	16 mm	45 MAX (5084 N-mm)

THREADED AND BREAKAWAY NANO CIRCULARS

