

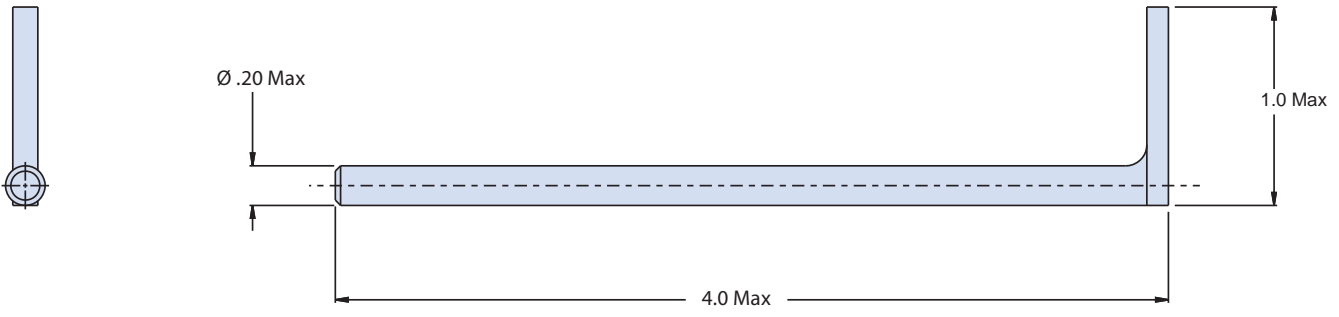
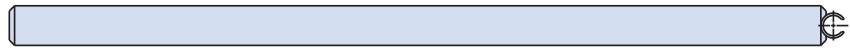
182-014
90° Insertion Tool
For Fiber Optic Termini

B

Right Angle (90°) Insertion Tool for Fiber Optic Termini

The 90° terminus insertion tool is designed to help populate connectors with fiber termini in situations where space is limited—while offering users the same easy insertion as with the straight 182-013 tool. Ideal for use in boxes and on connectors with backshells that inhibit normal rear insertion. Designed for use with M29504, GHD and many other termini available from Glenair.

Part Number	Compatible Termini	
182-014	181-039	M29504/14 Pin
	181-040	M29504/15 Socket
	181-051	M29504/3 Dummy
	181-011	Size 16 Socket
	181-012	Size 16 Pin
	181-047	GHD, Keyed
	181-056	GHD, Non-Keyed
	181-043	NGCON



Dimensions in Inches (millimeters) are subject to change without notice.