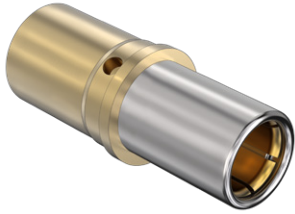
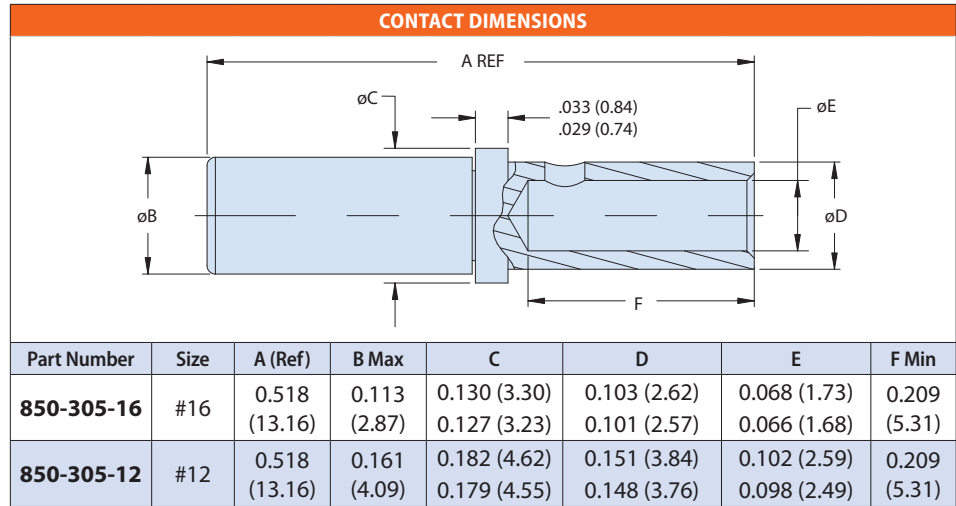


850-305 Crown Ring Socket Contacts for Series 806 PowerPlay

CONTACTS



Contacts are for use in Series 806 PowerPlay connectors accepting socket contacts.



MATERIAL/FINISH

- Body: High conductivity copper alloy (approx 93% IACS) per ASTM B301 / gold plate per ASTM B488 over nickel per SAXE-AMS-QQ-N-290
- Crown ring: 17-4PH CRES per AMS 5528 / passivated
- Hood: 305 CRES per SAE-AMS-QQ-S-763 / passivated

NOTES

- Crimp toola:
 - Crimper: M22520/1-01
 - Locator: M22520/1-04
- Insertion/Extraction:
 - #16 - M81969/14-03
 - #12 - M81969/14/04
- Performance data
 - Operating temperature: -65°C to 260°C
- Contacts to be bagged and identified with Glenair part number and date code.

TOOL DATA

Contact Size	Wire Size	Crimp Tool		Locator		Insertion/Extraction	
		Military P/N	Glenair	Military P/N	Glenair	Military P/N	Glenair
#16	16-20 AWG	M22520/1-01	809-136	M22520/1-04	809-137	M81969/14-03	809-131
#12	12-14 AWG	M22520/1-01	809-136	M22520/1-04	809-137	M81969/14-04	809-132