

Series 806 Mil-Aero PowerPlay
667-440, 667-441, 667-443 Receptacle and Plug Covers

SERIES 806 MIL-AERO POWERPLAY HIGH DENSITY

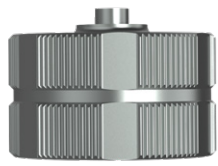


Figure 1
667-440 Receptacle Cover



Figure 2
667-441 Plug Cover



Figure 3
667-443 Self-Locking Receptacle Cover

MATERIAL/FINISH

- Cover: aluminum alloy, high grade engineering thermoplastic or stainless steel. See ordering info for finish options
- O-ring, gasket: fluorosilicone
- Hardware: stainless steel, passivated
- Lanyard: see Attachment Lanyards table

TABLE 2 RING CODES

Ring Type	Ring Code	Inside Diameter
No Ring	00	—
Ring Terminal	04	.126 (3.20)
	06	.145 (3.68)
	08	.188 (4.78)
	10	.197 (5.00)
	12	.423 (10.74)
	14	.481 (12.22)
	16	.560 (14.22)
	18	.600 (15.24)
	20	.635 (16.13)
	22	.695 (17.65)
Solid Ring	24	.715 (18.16)
	26	.766 (19.46)
	28	.845 (21.46)
	30	.885 (22.48)
	32	.950 (24.13)
	34	1.015 (25.78)
	36	1.070 (27.18)
	38	1.135 (28.83)
	40	1.210 (30.73)
	42	1.275 (32.39)
	44	1.380 (35.05)
	46	1.470 (37.34)
	48	1.625 (41.28)
	Split Ring	50
52		.492 (12.50)
54		.648 (16.46)
56		.757 (19.23)
58		.898 (22.81)
60		1.023 (25.98)
64		1.137 (28.88)
68		1.357 (34.47)

HOW TO ORDER

Sample Part Number	667-441	ME	12	U	01	-6
Basic Part Number	667-440 = Receptacle cover (fig. 1) 667-441 = Plug cover (fig. 2) 667-443 = Receptacle cover, self-locking (fig. 3)					
Material and Finish	NF = Aluminum, CAD/O.D. Over Electroless Nickel MT = Aluminum, Nickel-PTFE ME = Aluminum, Electroless Nickel TZ = Aluminum, Tin-Zinc Z1 = Stainless, Passivated					
Shell Size	11, 14, 16, 18, 20					
Attachment Lanyard (Table I)	N = No attachment G = Nylon rope SK = Nylon rope with slip knot U = SST rope with polyurethane coating H = SST rope with High-Temperature translucent FEP jacket S = Sash chain, #8, SST					
Attachment Ring Code (Table 2)	Omit for attachment types N and SK See Table 2 for ring styles and sizes					
Attachment Length	Omit for attachment type N Lanyard length in inches					

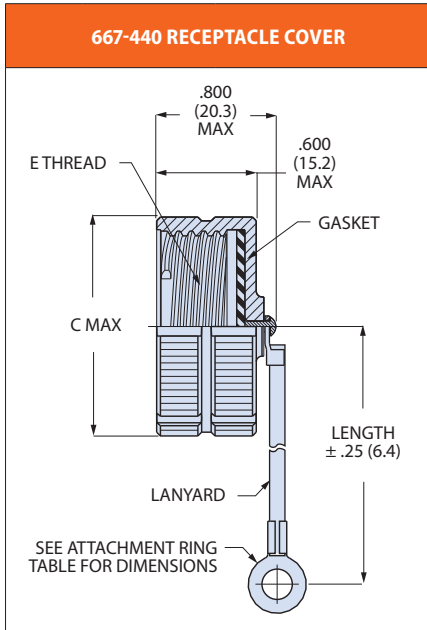
ATTACHMENT LANYARDS

<p>Nylon Rope (G) -55° to +100°C, black, very flexible, very good abrasion resistance, good resistance to fuels, .120" (3mm) diameter</p>	<p>Sash Chain (S) Stainless steel, #8 chain, .240" (6mm)</p>
<p>Polyurethane Coated Wire Rope (U) Black polyurethane over stainless steel rope, -55° to +125°C, very flexible, excellent abrasion resistance, excellent resistance to fuels, .080" (2mm) diameter</p>	<p>Slip Knot (SK) 55° to +100°C, black, very flexible, very good abrasion resistance, good resistance to fuels, .120" (3mm) diameter. Length includes .5" (13mm) diameter loop.</p>
<p>Teflon® Jacketed Wire Rope (H) Translucent FEP jacket over stainless steel, -55° to +200°C, fair flexibility, good abrasion resistance, .100" diameter</p>	

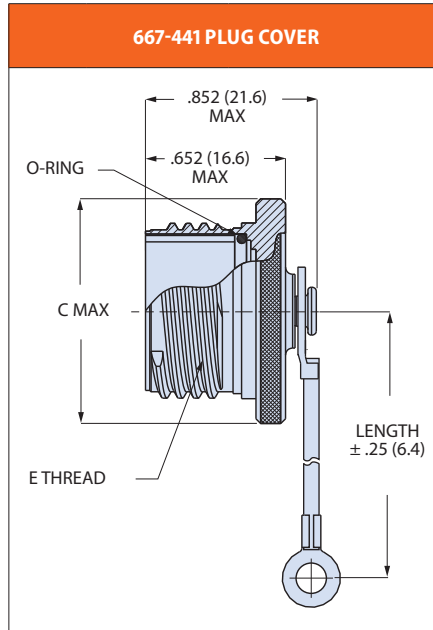
Series 806 Mil-Aero PowerPlay

667-440, 667-441, 667-443 Receptacle and Plug Covers

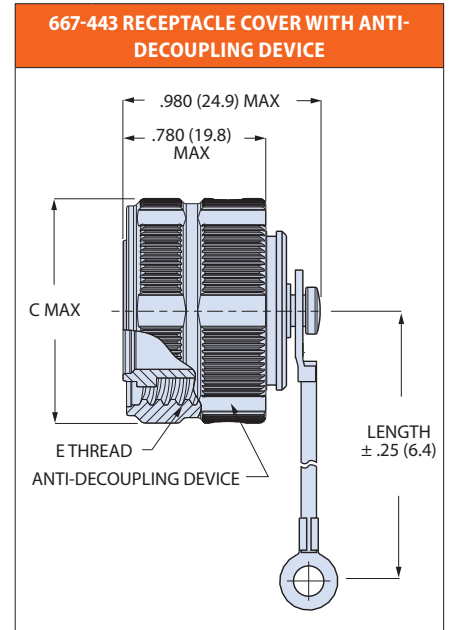
SERIES 806 MIL-AERO POWERPLAY HIGH DENSITY



Shell Size	ØC Max	E Thread
7	.600 (15.2)	.4375-.067P-.2L-TS-2B
8	.640 (16.3)	.5000-.067P-.2L-TS-2B
9	.730 (18.5)	.5625-.067P-.2L-TS-2B
10	.775 (19.7)	.6250-.067P-.2L-TS-2B
11	.828 (21)	.6875-.067P-.2L-TS-2B
12	.890 (22.6)	.7500-.067P-.2L-TS-2B
14	1.030 (26.2)	.875-.067P-.2L-TS-2B
16	1.140 (30)	1.000-.067P-.2L-TS-2B
18	1.280 (32.5)	1.125-.067P-.2L-TS-2B
20	1.390 (35.3)	1.250-.067P-.2L-TS-2B
22	1.515 (38.5)	1.375-.067P-.2L-TS-2B
24	1.710 (43.4)	1.500-.067P-.2L-TS-2B



Shell Size	ØC Max	E Thread
7	.606 (15.4)	.4375-.067P-.2L-TS-2A
8	.676 (17.2)	.5000-.067P-.2L-TS-2A
9	.771 (19.6)	.5625-.067P-.2L-TS-2A
10	.832 (21.1)	.6250-.067P-.2L-TS-2A
11	.890 (22.6)	.6875-.067P-.2L-TS-2A
12	.950 (24.1)	.7500-.067P-.2L-TS-2A
14	1.110 (28.2)	.875-.067P-.2L-TS-2A
16	1.170 (29.7)	1.000-.067P-.2L-TS-2A
18	1.350 (34.3)	1.125-.067P-.2L-TS-2A
20	1.470 (37.3)	1.250-.067P-.2L-TS-2A
22	1.600 (40.6)	1.375-.067P-.2L-TS-2A
24	1.710 (43.4)	1.500-.067P-.2L-TS-2A



Shell Size	ØC Max	E Thread
7	.606 (15.4)	.4375-.067P-.2L-TS-2B
8	.676 (17.2)	.5000-.067P-.2L-TS-2B
9	.771 (19.6)	.5625-.067P-.2L-TS-2B
10	.832 (21.1)	.6250-.067P-.2L-TS-2B
11	.890 (22.6)	.6875-.067P-.2L-TS-2B
12	.950 (24.1)	.7500-.067P-.2L-TS-2B
14	1.110 (28.2)	.875-.067P-.2L-TS-2B
16	1.170 (29.7)	1.000-.067P-.2L-TS-2B
18	1.350 (34.3)	1.125-.067P-.2L-TS-2B
20	1.470 (37.3)	1.250-.067P-.2L-TS-2B
22	1.600 (40.6)	1.375-.067P-.2L-TS-2B
24	1.710 (43.4)	1.500-.067P-.2L-TS-2B

SOLID ATTACHMENT RING DIMENSIONS

Ring Code	Inside Diameter	Max. Outside Diameter
00	—	—
04	.126 (3.20)	.310 (7.87)
06	.145 (3.68)	.310 (7.87)
08	.188 (4.78)	.310 (7.87)
10	.197 (5.00)	.310 (7.87)
11	.326 (8.28)	.445 (11.30)
12	.423 (10.74)	.535 (13.59)
14	.481 (12.22)	.593 (15.06)
16	.560 (14.22)	.672 (17.07)
18	.600 (15.24)	.712 (18.08)
20	.635 (16.13)	.770 (19.56)
22	.695 (17.65)	.830 (21.08)

Ring Code	Inside Diameter	Max. Outside Diameter
24	.715 (18.16)	.830 (21.08)
26	.766 (19.46)	.895 (22.73)
28	.845 (21.46)	1.026 (26.06)
30	.885 (22.48)	1.026 (26.06)
32	.950 (24.13)	1.172 (29.77)
34	1.015 (25.78)	1.205 (30.61)
36	1.070 (27.18)	1.205 (30.61)
38	1.135 (28.83)	1.260 (32.00)
40	1.210 (30.73)	1.322 (33.58)
42	1.275 (32.39)	1.385 (35.18)
44	1.380 (35.05)	1.485 (37.72)
46	1.470 (37.34)	1.672 (42.47)

Ring Code	Inside Diameter	Max. Outside Diameter
48	1.625 (41.28)	1.797 (45.64)
50	.432 (10.97)	.570 (14.48)
52	.492 (12.50)	.630 (16.00)
54	.648 (16.46)	.790 (20.07)
56	.757 (19.23)	.890 (22.61)
58	.898 (22.81)	1.040 (26.42)
60	1.023 (25.98)	1.160 (29.46)
64	1.137 (28.88)	1.270 (32.26)
68	1.357 (34.47)	1.480 (37.59)