

971-013 Micro-Crimp PowerPlay Rectangular Rear-Mount Receptacle for Bus-Bar Termination

MICRO-CRIMP POWERPLAY RECTANGULAR



HOW TO ORDER				
Sample Part Number	971-013	-ME	E-2	P
Basic Part Number	Micro-Crimp PowerPlay Rectangular Receptacle Connector, Rear Mount for Bus-Bar Termination			
Connector Finish and Material	MT = Aluminum, Nickel-PTFE ME = Aluminum, Electroless Nickel TZ = Aluminum, Tin-Zinc Z1 = Stainless, Passivated			
Shell Size and Insert Arrangement	See Shell Size and Insert Arrangement Table			
Contact Type	P = Pins S = Sockets			

SHELL SIZE / CONTACT ARRANGEMENTS - FACE VIEW, PIN INSERT	
<p>A-2 2X Size #8</p>	<p>C-2 2X Size #4</p>
<p>E-2 2X Size #2</p>	<p>G-2 2X Size #0</p>

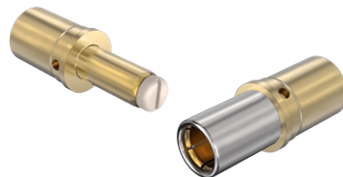
MATERIAL/FINISH

- Shell: per How to Order Table
- Seal/Grommet: hi-temp silicone rubber
- Contacts: copper alloy / gold with stainless steel Crown Ring and thermoplastic safe-touch tip
- Insulator: hi-temp composite

NOTES

- 971-013 receptacles mate with 971-010 plugs of the same size, layout and the opposite contact gender.
- Electrical performance
 - DWV: 5000 VAC pin-pin and pin-shell (sea level)
 - Insulation resistance: 5000 megohm min at 500 VDC

GLENAIR SIGNATURE CROWN RING CONTACTS



- High vibration-resistant, high-conductivity gold-plated copper alloy. Socket contact equipped with stainless steel Crown Ring. Pin contact equipped with thermoplastic finger-safe tip.

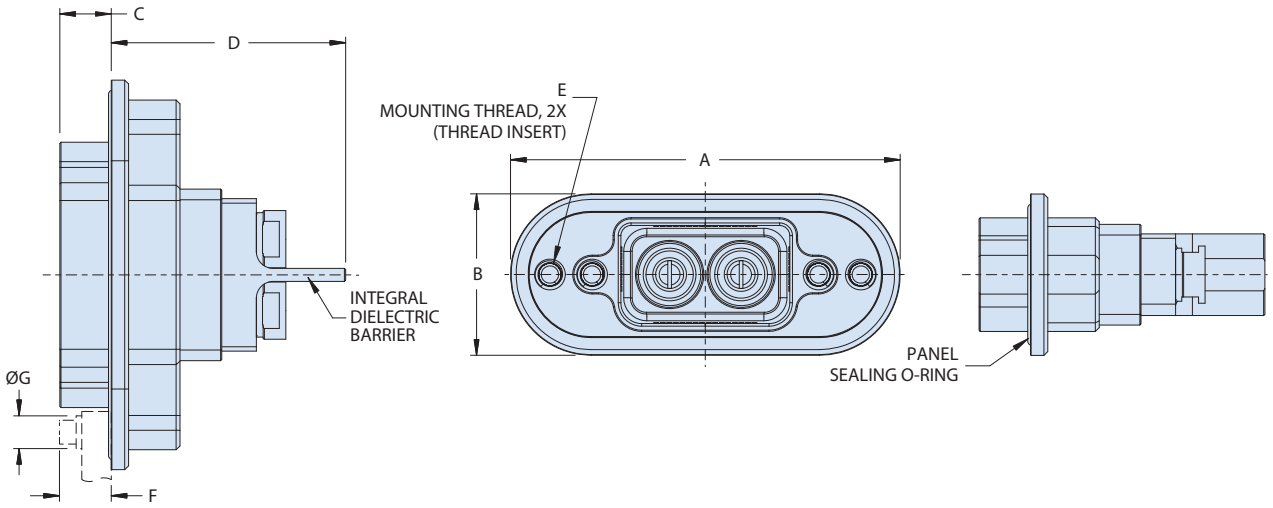
FINGER-PROOF CONTACTS		
Size	Pin	Socket
8	Yes	Yes
4	Yes	Yes
2	Yes	Yes
1/0	Yes	No

Finger-proof to IEC 60529 Level IP2X (Rated voltages Not exceeding 1,000 VAC or 1500 VDC)

971-013 Micro-Crimp PowerPlay Rectangular Rear-Mount Receptacle for Bus-Bar Termination

MICRO-CRIMP POWERPLAY RECTANGULAR

DIMENSIONS

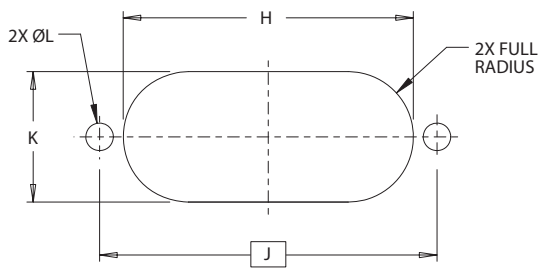


Shell Size	A	B	C	D	E		F Panel Plus Mounting Hardware	ØG Screw Head or Washer Dia.
					Thread	Hole Depth		
A	2.73 (69.34)	1.15 (29.21)	.37 (9.40)	1.63 (41.40) Max	8-32UNC	.360 (9.14) Min	.350 (8.89) Max	.325 (8.25) Max
C	2.96 (75.18)	1.26 (32.00)		1.84 (46.74) Max				
E	3.27 (83.06)	1.36 (34.54)	.43 (10.92)	2.00 (50.80) Max	10-24UNC	.440 (11.18) Min	.420 (10.67) Max	.375 (9.52) Max
G	3.88 (98.55)	1.50 (38.10)	.57 (14.48)	2.04 (51.82) Max	1/4-20UNC	.560 (14.22) Min	.560 (14.22) Max	.490 (12.45) Max

COMPATIBLE TURBOFLEX CABLES

Single-Wall TurboFlex R Cable		Single-Wall TurboFlex M Cable		Dual-Wall Turboflex M Shielded Cable		Dual-Wall TurboFlex R Cable
961-004	961-041	967-021	967-022	967-023	967-024	961-035
Duraelectric Insulation	Duraelectric Light Insulation	Duraelectric Insulation	Duraelectric Light Insulation	Duraelectric Insulation	Duraelectric Light Insulation	Duraelectric Insulation

PANEL CUTOUT



Shell Size	H ±.012	J Basic	K ±.012	ØL ±.004
A	1.782 (45.26)	(2.09)	0.776 (19.71)	0.173 (4.39)
C	2.014 (51.16)	(2.32)	0.893 (22.68)	
E	2.252 (57.20)	(2.61)	0.986 (25.04)	0.199 (5.05)
G	2.681 (68.10)	(3.16)	1.125 (28.58)	0.259 (6.58)

971-013 Micro-Crimp PowerPlay Rectangular Rear-Mount Receptacle for Bus-Bar Termination

MICRO-CRIMP POWERPLAY RECTANGULAR

CONTACT FEATURES AND TOOL P/N

Contact Size	V Thread	W Wrench Flats	X	Y	Wrench Part No.
8AWG	6-32UNC	(15/64")	(0.14)	.190 Min./ .325 MAX	979-008-8
4AWG	10-32UNF	(5/16")		.410 Min./ .560 MAX	979-008-4
2AWG	1/4-28UNF	(3/8")		.530 Min./ .680 MAX	979-008-2
1/0	5/16-24UNF	(1/2")	(0.19)	.650 Min./ .800 MAX	979-008-0

RECOMMENDED TORQUE

Contact Size	Torque (In-Lb)
8AWG	8-10
4AWG	20-29
2AWG	60-70
1/0	90-140

BUS-BAR HEIGHT FROM PANEL*

Insert Arrangement	Z ±.015
A-2	1.265 (32.13)
C-2	1.365 (34.67)
E-2	1.465 (37.21)
G-2	1.375 (34.92)

* Important dimension/tolerance, to be held by customer, at system level

BUS-BAR DIMENSIONS FOR CONTACT CONNECTION

Insert Arrangement	R	S Basic	T ±.004
A-2	.265 MAX	(0.41)	0.145 (3.68)
C-2	.385 MAX	(0.52)	0.197 (5.00)
E-2	.475 MAX	(0.60)	0.257 (6.53)
G-2	.595 MAX	(0.73)	0.320 (8.13)