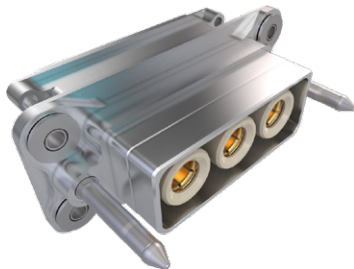


971-016 Micro-Crimp PowerPlay Rectangular Rear Float-Mount Receptacle with Crimp-Removable Contacts



971-016

HOW TO ORDER					
Sample Part Number	971-016	-ME	E-2	S	-A
Basic Part Number	Rear Float Mount Micro-Crimp PowerPlay Rectangular Receptacle Connector with Crimp-removable Contacts				
Connector Finish	MT = Aluminum, Nickel-PTFE ME = Aluminum, Electroless Nickel TZ = Aluminum, Tin-Zinc Z1 = Stainless, Passivated				
Size and Layout	See Shell Size and Insert Arrangement Table				
Contact Type	See Contact Type table				
Backshell Style	A = Environmental, with Banding Platform; (P/N 979-010) B = Strain Relief (979-014) Omit = Supplied Without Backshell				

MATERIAL/FINISH

- Shell: per How to Order Table
- Seal/Grommet: hi-temp silicone rubber
- Contacts: copper alloy / gold with stainless steel Crown Ring and thermoplastic safe-touch tip
- Insulator: hi-temp composite

NOTES

- 971-016 plugs mate with 971-017 receptacles of the same size, layout and the opposite contact gender.
- See contact drawings for crimp and removal tools.
- Electrical performance
 - DWV: 5000 VAC pin-pin and pin-shell (sea level)
 - Insulation resistance: 5000 megohm min at 500 VDC

FINGER-PROOF CONTACTS

Size	Pin	Socket
8	Yes	Yes
4	Yes	Yes
2	Yes	Yes
1/0	Yes	No

Finger-proof to IEC 60529 Level IP2X (Rated voltages Not exceeding 1,000 VAC or 1500 VDC)

SHELL SIZE / CONTACT ARRANGEMENTS - FACE VIEW, PIN INSERT

<p>A-2 2X Size #8</p>	<p>B-3 3X Size #8</p>	<p>B-4 2X Size #8 / 2X Size #20</p>
<p>C-2 2X Size #4</p>	<p>D-3 3X Size #4</p>	<p>E-2 2X Size #2</p>
<p>F-3 3X Size #2</p>	<p>G-2 2X Size #0</p>	<p>H-3 3X Size #0</p>

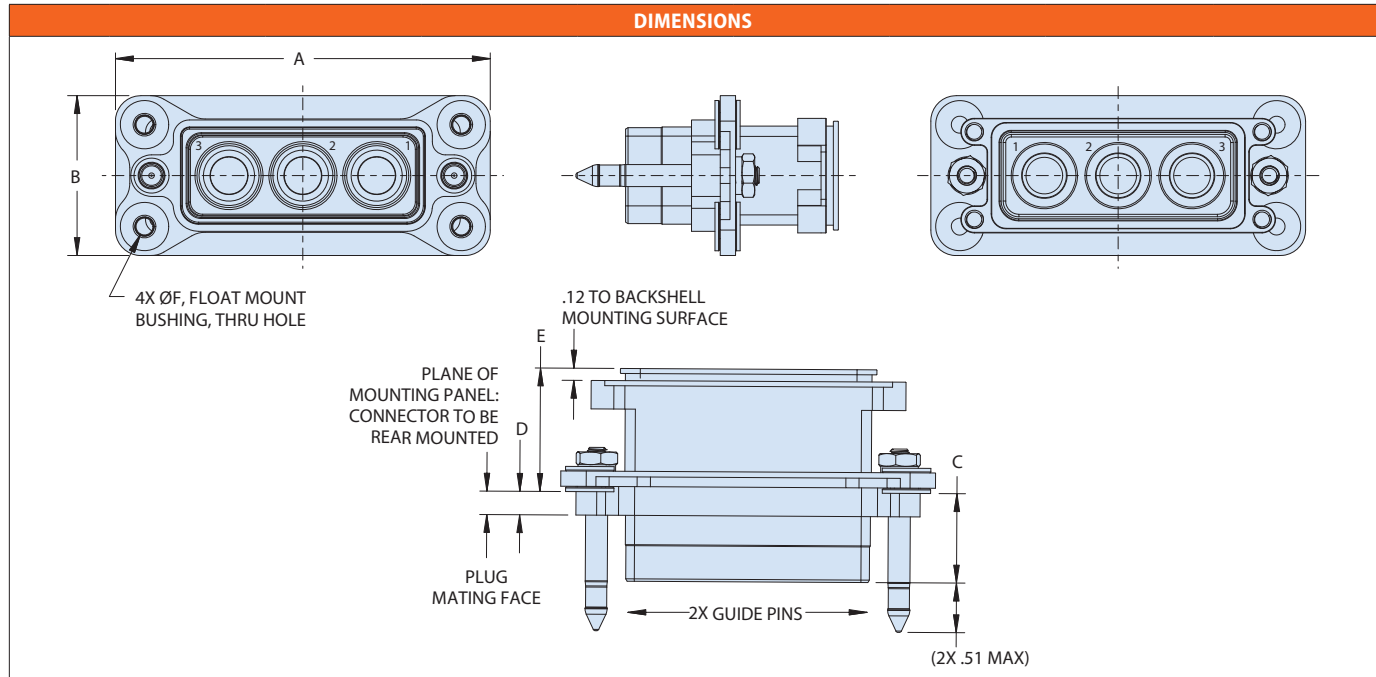
CONNECTOR CONTACT TYPE

Contact Code	Description	Contact P/N
A	Pin Connector, No Contacts	N/A
P	Pin Connector, Crown Ring Pin Contacts	850-325
	Pin Connector, Crown Ring Pin Contacts and 39029 type Size #20 contacts (insert arrangement B-4 only)	850-325 and 850-202-20
G	Pin Connector, Reduced Crimp Barrel Crown Ring Pin Contacts (for Size #8 and Size #4 contacts only)	850-325
B	Socket Connector, No Contacts	N/A
S	Socket Connector, Crown Ring Socket Contacts	850-326
	Socket Connector, Crown Ring Socket Contacts and 39029 type Size #20 contacts (insert arrangement B-4 only)	850-326 and AS39029/56-351
H	Socket Connector, Reduced Crimp Barrel Crown Ring Socket Contacts (for Size #8 and Size #4 contacts only)	850-326

MICRO-CRIMP POWERPLAY RECTANGULAR

971-016 Micro-Crimp PowerPlay Rectangular Rear Float-Mount Receptacle with Crimp-Removable Contacts

MICRO-CRIMP POWERPLAY RECTANGULAR



Shell Size	A	B	C	D ±.012	E	ØF ±.003	Mounting Screw Size	Nominal Radial Float
A	2.05 (52.07)	1.27 (32.26)	0.79 (20.07)	0.200 (5.08)	0.83 (21.08)	0.142 (3.61)	#6	0.040 (1.02)
B	2.46 (62.48)							
C	2.32 (58.93)							
D	2.84 (72.14)							
E	2.68 (68.07)	1.50 (38.10)	.88 (22.35)	.230 (5.84)	1.17 (29.72)	.168 (4.27)	#8	.050 (1.27)
F	3.28 (83.31)							
G	2.97 (75.44)							
H	3.68 (93.47)							

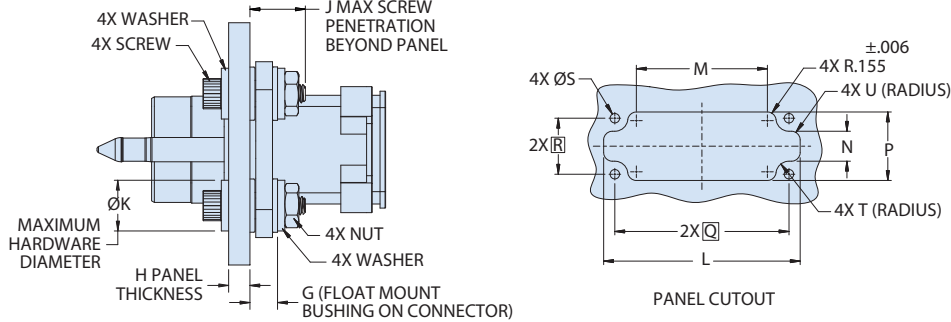
WIRE SEALING	
Contact Size	Wire Diameter Range
20AWG	.040-.083 (1.02-2.11)
8AWG	.209-.277 (5.31-7.04)
4AWG	.323-.391 (8.20-9.93)
2AWG	.400-.477 (10.16-12.12)
1/0	.486-.572 (12.34-14.53)

COMPATIBLE TURBOFLEX CABLES						
Single-Wall TurboFlex Cable		Single-Wall TurboFlex M Cable		Single Wall Turboflex M Shielded Cable		Dual-Wall TurboFlex Cable
961-004	961-041	967-021	967-022	967-023	967-024	961-035
Duraelectric Insulation	Duraelectric Light Insulation	Duraelectric Insulation	Duraelectric Light Insulation	Duraelectric Insulation	Duraelectric Light Insulation	Duraelectric Insulation

971-016 Micro-Crimp PowerPlay Rectangular Rear Float-Mount Receptacle with Crimp-Removable Contacts

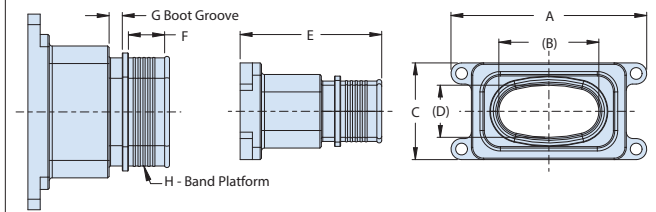
MICRO-CRIMP POWERPLAY RECTANGULAR

MOUNTING AND PANEL CUTOUT



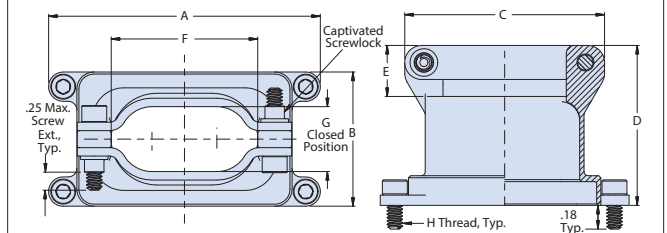
Shell Size	G	H	J	ØK Max	Mounting Hardware Size	L ±.012	M ±.010	N ±.010	P ±.010	Q Basic	R Basic	Øs ±.003	T ±.006	U ±.006	
A	0.22 (5.59)	.090-.170 (2.29-4.32)	0.47 (11.94)	0.363 (9.22)	#6	1.873 (47.57)	0.918 (23.32)	.402 (10.21)	.859 (21.82)	1.58 (40.13)	.80 (20.32)	.143 (3.63)	.199 (5.05)	.125 (3.18)	
B						2.278 (57.86)	1.328 (33.73)			1.99 (50.55)					
C						2.105 (53.47)	1.155 (29.34)		1.85 (46.99)						
D						2.625 (66.68)	1.675 (42.55)		2.37 (60.20)						
E	0.25 (6.35)	.120-.200 (3.05-5.08)	0.73 (18.54)	0.453 (11.51)	#8	2.363 (60.02)	1.349 (34.26)	.464 (11.79)	1.089 (27.66)	2.11 (53.59)	.93 (23.62)	.169 (4.29)	.233 (5.92)		.155 (3.94)
F						3.137 (79.68)	1.963 (49.86)			1.103 (28.02)					
G						2.792 (70.92)	1.629 (41.38)	1.228 (31.19)	2.40 (60.96)						
H						3.515 (89.28)	2.339 (59.41)	3.11 (78.99)	3.11 (78.99)						

979-010 BACKSHELL (INCLUDED WITH "A" OPTION)



Size	A	(B)	C	(D)	E	F	G	H Band Size
A	1.60 (40.64)	(0.60)	0.78 (19.81)	(0.39)	1.19 (30.23)	.270 (6.86)	.060 (1.52)	Glenair Micro-Band (1/8" W)
B	2.00 (50.80)	(0.90)						
C	1.83 (46.48)	(0.83)						
D	2.35 (59.69)	(1.24)						
E	2.00 (50.80)	(1.02)	0.90 (22.86)	(0.48)	1.22 (30.99)	.370 (9.40)	.135 (3.43)	Glenair Standard Band (1/4" W)
F	2.71 (68.83)	(1.52)						
G	2.37 (60.20)	(1.22)						
H	3.09 (78.49)	(1.82)						

979-014 BACKSHELL (INCLUDED WITH "B" OPTION)



Size	A	B	C Max.	D	E	F Min.	G	H Thd.
A	1.60 (40.64)	0.78 (19.81)	1.230 (31.24)	1.140 (28.96)	0.375 (9.52)	0.65 (16.51)	0.28 (7.11)	4-40
B	2.00 (50.80)	0.78 (19.81)	1.495 (37.97)	1.140 (28.96)	0.375 (9.52)	0.92 (23.37)	0.28 (7.11)	
C	1.83 (46.48)	0.90 (22.86)	1.450 (36.83)	1.175 (29.85)	0.375 (9.52)	0.87 (22.10)	0.39 (9.91)	
D	2.35 (59.69)	0.90 (22.86)	1.840 (46.74)	1.175 (29.85)	0.375 (9.52)	1.27 (32.26)	0.39 (9.91)	
E	2.00 (50.80)	0.99 (25.15)	1.620 (41.15)	1.205 (30.61)	0.375 (9.52)	1.05 (26.67)	0.48 (12.19)	6-32
F	2.71 (68.83)	1.00 (25.40)	2.245 (57.02)	1.515 (38.48)	0.500 (12.70)	1.49 (37.85)	0.48 (12.19)	
G	2.37 (60.20)	1.13 (28.70)	1.965 (49.91)	1.515 (38.48)	0.500 (12.70)	1.21 (30.73)	0.57 (14.48)	
H	3.09 (78.49)	1.13 (28.70)	2.540 (64.52)	1.515 (38.48)	0.500 (12.70)	1.78 (45.21)	0.57 (14.48)	