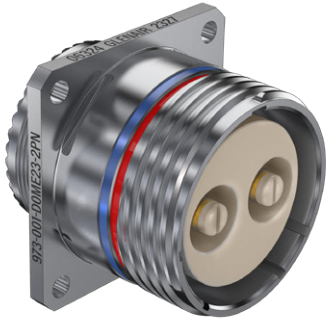


973-001 SuperNine Series III PowerPlay Triple-Start
00, D0, CS Panel-Mount Receptacles

SUPERNINE SERIES III POWERPLAY TRIPLE-START



MATERIAL/FINISH

- Housing and coupling ring per How to Order Table
- Seal/grommet: silicone blend
- Contacts: copper alloy / gold
- Insulator: High-Temp composite

NOTES

- 973-001 mates with 973-001 of the same size layout, polarization, and opposite gender. Plugs are designed to also mate with 973-002, 973-003, 973-005, and 973-006.
- Standard mounting cutouts and accessory threads / teeth per MIL-DTL-38999 Series III.
- Electrical Performance:
 - DWV: 5000 VAC pin-pin and pin-shell (sea level)
 - Insulation resistance: 5000 megohm min at 500 VDC

POLARIZATION KEYS AND KEYWAYS

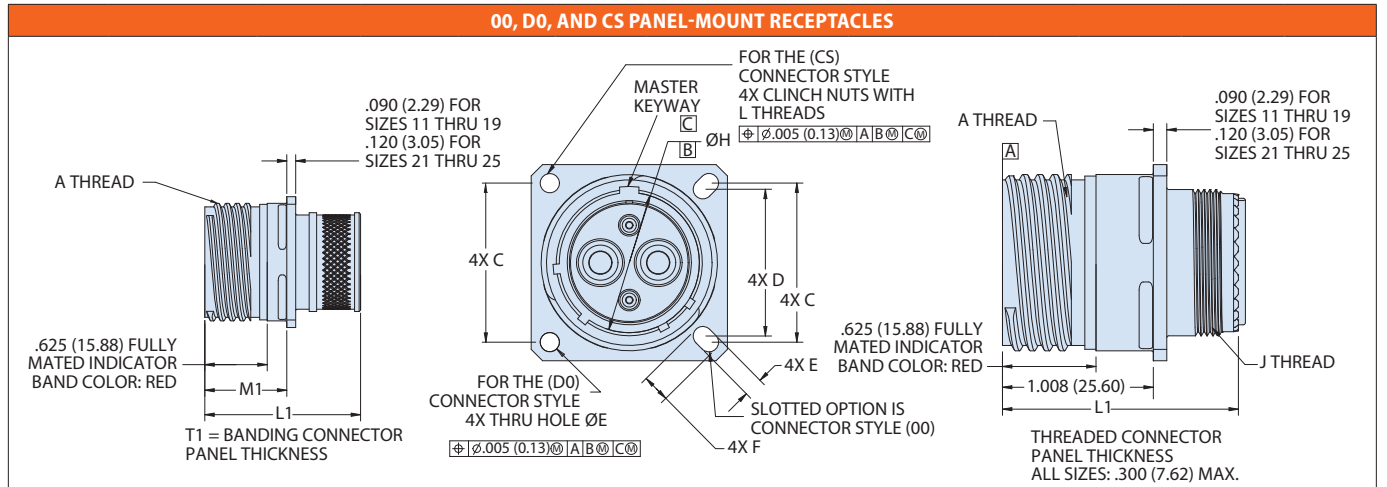
Shell Size	Polarization Code	Minor Key/Keyway Rotation				
		A°	B°	C°	D°	
11	N	95	141	208	236	
	A	113	156	182	292	
	B	90	145	195	252	
	C	53	156	220	255	
	D	119	146	176	298	
	13	E	51	141	184	242
		F	77	141	220	273
G		66	156	176	236	
N		80	142	196	293	
A		135	170	200	310	
B		49	169	200	244	
C		66	140	200	257	
15	D	62	145	180	280	
	E	79	153	197	272	
	F	95	150	180	235	
	G	115	157	185	270	
	17	A	135	170	200	310
B		49	169	200	244	
C		66	140	200	257	
D		62	145	180	280	
E		79	153	197	272	
19	F	95	150	180	235	
	G	115	157	185	270	
	N	80	142	196	293	

HOW TO ORDER					
Sample Part Number	973-001	-	00	ME	13-1 P N
Basic Part Number	973-001 SuperNine PowerPlay Connector				
Rear Accessory Option	- = Accessory Thread and Teeth B = Banding Porch with Shrink Boot Groove				
Connector Style	00 = Receptacle, Panel-Mount, Slotted Holes D0 = Receptacle, Panel-Mount, Round Holes CS = Receptacle, Panel-Mount, Standard Clinch Nuts				
Connector Material / Finish	NF = Aluminum, CAD/O.D. Over Electroless Nickel MT = Aluminum, Nickel-PTFE ME = Aluminum, Electroless Nickel TZ = Aluminum, Tin Zinc Z1 = Stainless Steel, Passivate				
Size and Layout	See Shell Size / Contact Arrangements Table				
Contact Style	See Contact Style Table				
Polarization	A, B, C, D, E, F, G, N (see Polarization Keys and Keyways table)				

SHELL SIZE / CONTACT ARRANGEMENTS (FACE OF PIN INSERT)					
11-1 • 1X #8	13-1 • 1X #4	15-1 • 1X #2	17-1 • 1X #1/0	17-2 • 2X #8	17-4 • 2X #8 and 2X #20
19-3 • 3X #8	21-4 • 4X #8	21-5 • 3X #8 and 2X #20	23-2 • 2X #4		
25-2 • 2X #2	25-4 • 4X #4	25-10 • 2X #4 and 8X #16			
15-3 • 1X #8 and 2X #20	17-3 • 1X #4 and 2X #20	19-A3 • 1X #2 and 2X #20	21-3 • 1X #1/0 and 2X #20		

973-001 SuperNine Series III PowerPlay Triple-Start 00, D0, CS Panel-Mount Receptacles

SUPER NINE SERIES III POWERPLAY TRIPLE-START



Shell Size-Contact Arr.	A Thread	B Sq.	C Bsc	D Bsc	E	F	ØH	J Thread	L Thread	Ø M Max	L1 Max	T1 Max									
11-1	.7500-.1P-.3L-TS-2A	1.043 (26.49) 1.019 (25.88)	0.812 (20.62)	0.719 (18.26)	0.136 (3.45) 0.120 (3.05)	0.202 (5.13) 0.186 (4.72)	0.575 (14.60) 0.569 (14.45)	M15 X 1.0-6g 0.100R	.112-40 UNC-3B	0.984 (24.99)	1.600 (40.64)	.150 (3.81)									
13-1	.8750-.1P-.3L-TS-2A	1.138 (28.91) 1.114 (28.30)	0.906 (23.01)	0.812 (20.62)		0.181 (4.60) 0.165 (4.19)	0.687 (17.45) 0.681 (17.30)	M18 X 1.0-6g 0.100R		1.157 (29.39)	1.600 (40.64)	.150 (3.81)									
15-1	1.0000-.1P-.3L-TS-2A	1.232 (31.29) 1.208 (30.68)	0.969 (24.61)	0.906 (23.01)		0.202 (5.13) 0.186 (4.72)	0.812 (20.62) 0.804 (20.42)	M22 X 1.0-6g 0.100R		.112-40 UNC-3B	1.280 (32.51)	2.000 (50.80) 1.600 (40.64)	.300 (7.62) .150 (3.81)								
15-3		1.232 (31.29) 1.208 (30.68)	0.969 (24.61)	0.906 (23.01)			0.812 (20.62) 0.804 (20.42)	M22 X 1.0-6g 0.100R			1.280 (32.51)	2.000 (50.80) 1.600 (40.64)	.300 (7.62) .150 (3.81)								
17-1	1.1875-.1P-.3L-TS-2A	1.323 (33.60) 1.299 (32.99)	1.062 (26.97)	0.969 (24.61)			0.202 (5.13) 0.186 (4.72)	0.937 (23.80) 0.930 (23.62)			M25 X 1.0-6g 0.100R	.112-40 UNC-3B	1.406 (35.71)	1.600 (40.64)	.150 (3.81)						
17-2														1.600 (40.64)	.150 (3.81)						
17-3														1.600 (40.64)	.150 (3.81)						
17-4														1.600 (40.64)	.150 (3.81)						
19-3	1.2500-.1P-.3L-TS-2A	1.449 (36.80) 1.425 (36.20)	1.156 (29.36)	1.062 (26.97)									0.202 (5.13) 0.186 (4.72)	1.042 (26.47) 1.035 (26.29)	M28 X 1.0-6g 0.100R	.112-40 UNC-3B	1.516 (38.51)	1.600 (40.64) 2.000 (50.80)	.150 (3.81) .300 (7.62)		
19-A3		1.449 (36.80) 1.425 (36.20)	1.156 (29.36)	1.062 (26.97)										1.042 (26.47) 1.035 (26.29)			M28 X 1.0-6g 0.100R	1.516 (38.51)	1.600 (40.64) 2.000 (50.80)	.150 (3.81) .300 (7.62)	
21-3	1.3750-.1P-.3L-TS-2A	1.575 (40.00) 1.551 (39.40)	1.250 (31.75)	1.156 (29.36)	0.250 (6.35) 0.234 (5.94)				1.167 (29.64) 1.161 (29.49)					M31 X 1.0-6g 0.100R			.112-40 UNC-3B	1.642 (41.71)	2.000 (50.80) 1.600 (40.64)	.300 (7.62) .125 (3.18)	
21-4		1.575 (40.00) 1.551 (39.40)	1.250 (31.75)	1.156 (29.36)					1.167 (29.64) 1.161 (29.49)										M31 X 1.0-6g 0.100R	1.642 (41.71)	2.000 (50.80) 1.600 (40.64)
23-2	1.5000-.1P-.3L-TS-2A	1.701 (43.21) 1.677 (42.60)	1.375 (34.92)	1.250 (31.75)		0.162 (4.11) 0.146 (3.71)			1.292 (32.82) 1.285 (32.64)	M34 X 1.0-6g 0.100R								.138-32 UNC-3B	1.768 (44.91)	1.600 (40.64)	.125 (3.18)
25-2		1.701 (43.21) 1.677 (42.60)	1.375 (34.92)	1.250 (31.75)					1.292 (32.82) 1.285 (32.64)											M34 X 1.0-6g 0.100R	1.768 (44.91)
25-4	1.6250-.1P-.3L-TS-2A	1.823 (46.30) 1.799 (45.69)	1.500 (38.10)	1.375 (34.92)			0.162 (4.11) 0.146 (3.71)	1.417 (35.99) 1.411 (35.84)	M37 X 1.0-6g 0.100R		.138-32 UNC-3B	1.890 (48.01)							2.000 (50.80) 1.600 (40.64)	.300 (7.62) .125 (3.18)	
25-10		1.823 (46.30) 1.799 (45.69)	1.500 (38.10)	1.375 (34.92)				1.417 (35.99) 1.411 (35.84)											M37 X 1.0-6g 0.100R	1.890 (48.01)	2.000 (50.80) 1.600 (40.64)

WIRE SEALING	
Contact Size	Wire Diameter
20	.040-.083 (1.02-2.11)
16	.065-.109 (1.65-2.77)
8	.209-.277 (5.31-7.04)
4	.323-.391 (8.20-9.93)
2	.400-.477 (10.16-12.12)
0	.486-.572 (12.34-14.53)

FINGER-PROOF CONTACTS		
Size	Pin	Socket
8	Yes	Yes
4	Yes	Yes
2	Yes	Yes
1/0	Yes	No
2/0	No	Yes

Finger-proof to IEC 60529 Level IP2X (Rated voltages Not exceeding 1,000 VAC or 1500 VDC)

CONTACT STYLE		
Code	Description	P/N
A	Pin Connector, No Contacts	
P	Pin Connector, Crown Ring Pin Contacts	850-325
	Pin Connector, Size #4 Crown Ring Pin Contacts and 39029 type Size #16 Pin Contacts (ins. arr. 25-10 only)	850-325 and 850-344-16
	Pin Connector, Size #8 or #4 Crown Ring Pin Contacts and 39029 type #20 Pin Contacts (arr. 17-4, 21-5, 15-3, 17-3)	850-325 and 850-202-20
	Pin Connector, Size #2 or #0 Crown Ring Pin Contacts and 39029 type #20 Pin Contacts (arr. 19-A3, 21-3)	850-325 and 850-346-20
G	Pin Connector, Reduced Crimp Barrel Crown Ring Pin Contacts (for Size #8 and Size #4 contacts only)	850-325
B	Socket Connector, No Contacts	
S	Socket Connector, Crown Ring Socket Contacts	850-326
	Socket Connector, Size #4 Crown Ring Socket Contacts and 39029 type Size #16 Socket Contacts (arr. 25-10 only)	850-326 and 850-309
	Socket Connector, Size #8 or #4 Crown Ring Socket Contacts and 39029 type #20 Socket Contacts (arr. 17-4, 21-5, 15-3, 17-3)	850-326 and AS39029/56-351
	Socket Connector, Size #2 or #0 Crown Ring Socket Contacts and 39029 type #20 Socket Contacts (arr. 19-A3, 21-3)	850-326 and 850-347-20
	Socket Connector, Reduced Crimp Barrel Crown Ring Socket Contacts (for Size #8 and Size #4 contacts only)	850-326
H	Socket Connector, Reduced Crimp Barrel Crown Ring Socket Contacts (for Size #8 and Size #4 contacts only)	850-326

PANEL CUT OUT FOR PANEL-MOUNT RECEPTACLE					
Shell Size	Ø N Min	Ø P Min	Ø R Holes	S1 Bsc	S2 Bsc
11	0.796 (20.22)	0.625 (15.88)		0.812 (20.62)	0.719 (18.26)
13	0.922 (23.42)	0.750 (19.05)		0.906 (23.01)	0.812 (20.62)
15	1.047 (26.59)	0.906 (23.01)	0.133 (3.38)	1.062 (26.97)	0.969 (24.61)
17	1.219 (30.96)	1.016 (25.81)	0.123 (3.12)	1.062 (26.97)	0.969 (24.61)
19	1.297 (32.94)	1.141 (28.98)		1.156 (29.36)	1.062 (26.97)
21	1.422 (36.12)	1.266 (32.16)		1.250 (31.75)	1.156 (29.36)
23	1.547 (39.29)	1.375 (34.92)	0.159 (4.04)	1.375 (34.92)	1.250 (31.75)
25	1.672 (42.47)	1.484 (37.69)	0.149 (3.78)	1.500 (38.10)	1.375 (34.92)