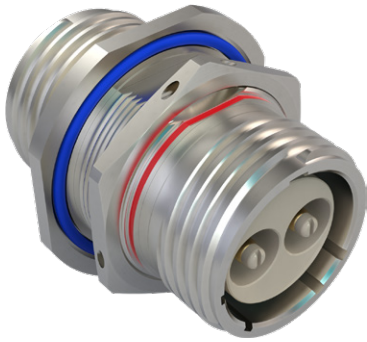


973-005 SuperNine Series III PowerPlay Triple-Start Bulkhead Feedthru Connector

SUPERNINE SERIES III POWERPLAY TRIPLE-START



HOW TO ORDER	
Sample Part Number	973-005 ME 17-2 P N N
Basic Part Number	38999 Power Connector
Material/Finish	NF = Aluminum, CAD/O.D. Over Electroless Nickel MT = Aluminum, Nickel-PTFE ME = Aluminum, Electroless Nickel TZ = Aluminum, Tin Zinc Z1 = Stainless Steel, Passivated
Shell Size/ Insert Arrangement	See Contact Arrangements Table
Contact Style	P = Pin Contact on Panel Side (Socket Opposite) S = Socket Contact on Panel Side (Pin Opposite)
Polarization Position	A, B, C, D, E, N = Normal (Panel Side)
Polarization Position	A, B, C, D, E, N = Normal (Flange Side)

MATERIAL/FINISH

- Shell and jam nut: per How to Order Table
- Seal and grommet: silicone blend
- Contacts: copper alloy / gold
- Insulator: High-Temp composite

NOTES

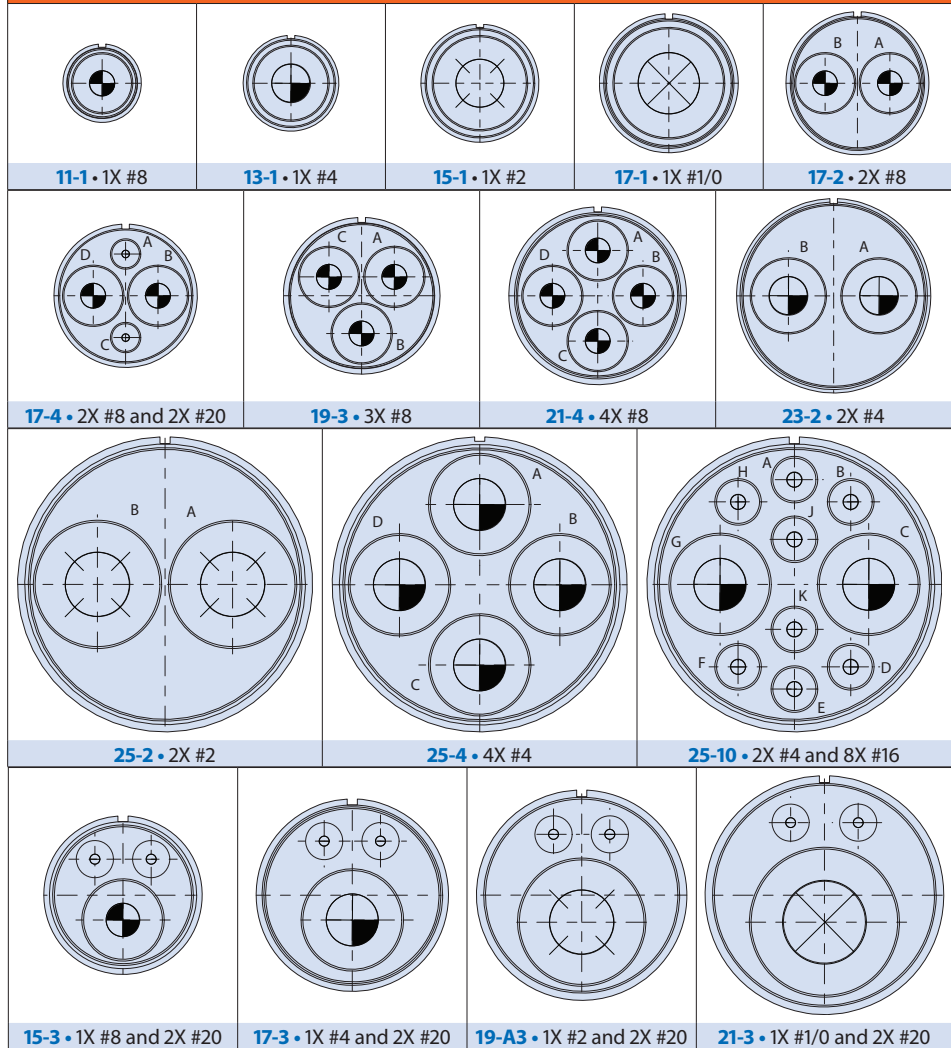
- Bulkhead feedthru receptacle 973-005 mates with 973-001 plugs having the same size, layout, polarization, and opposite contact gender.
- Electrical Performance:
 - DWV: 5000 VAC pin-pin and pin-shell (sea level)
 - Insulation resistance: 5000 megohm min at 500 VDC

FINGER-PROOF CONTACTS

Size	Pin	Socket
8	Yes	Yes
4	Yes	Yes
2	Yes	Yes
1/0	Yes	No
2/0	No	Yes

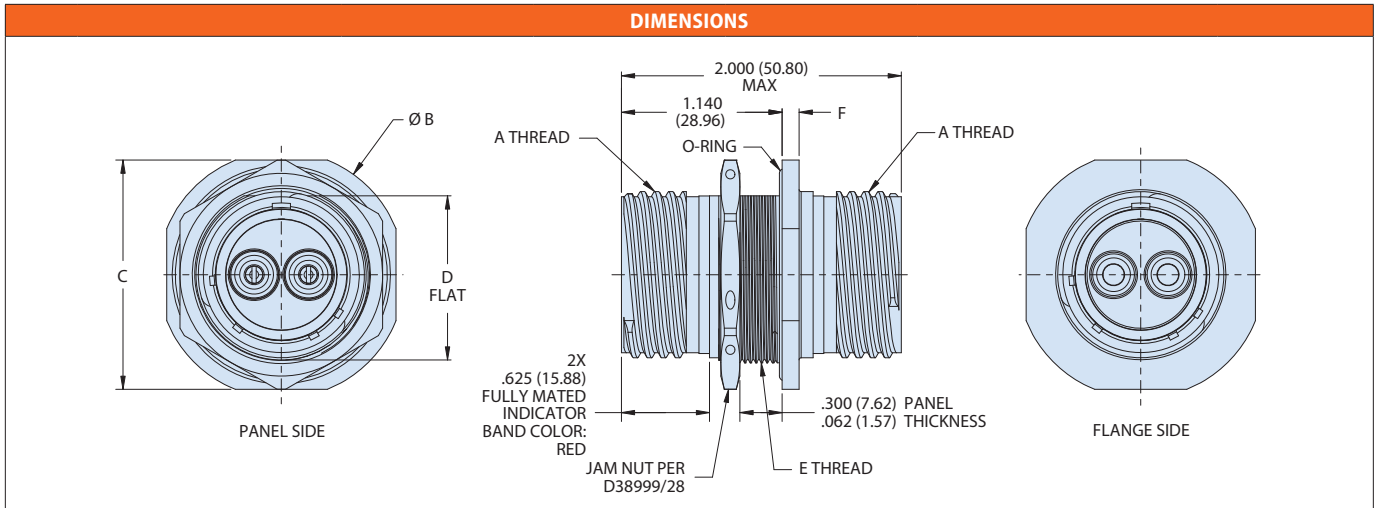
Finger-proof to IEC 60529 Level IP2X (Rated voltages Not exceeding 1,000 VAC or 1500 VDC)

SHELL SIZE / CONTACT ARRANGEMENTS (FACE OF PIN INSERT)



973-005 SuperNine Series III PowerPlay Triple-Start Bulkhead Feedthru Connector

SUPERNINE SERIES III POWERPLAY TRIPLE-START



Shell Size	A Thread	Ø B	C	D Flat	E Thread	F
11	.7500-.1P-.3L-TS-2A	1.386 (35.20) 1.362 (34.59)	1.268 (32.21) 1.236 (31.39)	0.755 (19.18) 0.745 (18.92)	M20 X 1.0-6g-0.100R	.120 (3.05)
13	.8750-.1P-.3L-TS-2A	1.512 (38.40) 1.488 (37.80)	1.390 (35.31) 1.358 (34.49)	0.942 (23.93) 0.932 (23.67)	M25 X 1.0-6g-0.100R	
15	1.0000-.1P-.3L-TS-2A	1.638 (41.61) 1.614 (41.00)	1.516 (38.51) 1.484 (37.69)	1.066 (27.08) 1.056 (26.82)	M28 X 1.0-6g 0.100R	
17	1.1875-.1P-.3L-TS-2A	1.764 (44.81) 1.740 (44.20)	1.642 (41.71) 1.610 (40.89)	1.191 (30.25) 1.181 (30.00)	M32 X 1.0-6g-0.100R	
19	1.2500-.1P-.3L-TS-2A	1.949 (49.50) 1.925 (48.90)	1.827 (46.41) 1.795 (45.59)	1.316 (33.43) 1.306 (33.17)	M35 X 1.0-6g-0.100R	.145 (3.68)
21	1.3750-.1P-.3L-TS-2A	2.075 (52.71) 2.051 (52.10)	1.953 (49.61) 1.921 (48.79)	1.441 (36.60) 1.431 (36.35)	M38 X 1.0-6g-0.100R	
23	1.5000-.1P-.3L-TS-2A	2.201 (55.91) 2.177 (55.30)	2.079 (52.81) 2.047 (51.99)	1.566 (39.78) 1.556 (39.52)	M41 X 1.0-6g-0.100R	
25	1.6250-.1P-.3L-TS-2A	2.323 (59.00) 2.299 (58.39)	2.205 (56.01) 2.173 (55.19)	1.691 (42.95) 1.681 (42.70)	M44 X 1.0-6g-0.100R	

POLARIZATION KEYS AND KEYWAYS						
Shell Size	Polarization Code	Minor Key/Keyway Rotation				
		A°	B°	C°	D°	
11	N	95	141	208	236	
	A	113	156	182	292	
	B	90	145	195	252	
	13	C	53	156	220	255
		D	119	146	176	298
	15	E	51	141	184	242
		F	77	141	220	273
G		66	156	176	236	
17	N	80	142	196	293	
	A	135	170	200	310	
19	B	49	169	200	244	
	C	66	140	200	257	
21	D	62	145	180	280	
	E	79	153	197	272	
23	F	95	150	180	235	
	G	115	157	185	270	

PANEL CUT OUT FOR BULKHEAD FEEDTHROUGH			
Shell Size	G	H Flat	
		Inches	Millimeters
11	0.835 (21.21)	.771 (19.58)	
	0.825 (20.96)	.761 (19.33)	
13	1.020 (25.91)	.955 (24.26)	
	1.010 (25.65)	.945 (24.00)	
15	1.145 (29.08)	1.085 (27.56)	
	1.135 (28.83)	1.075 (27.30)	
17	1.270 (32.26)	1.210 (30.73)	
	1.260 (32.00)	1.200 (30.48)	
19	1.395 (35.43)	1.335 (33.91)	
	1.385 (35.18)	1.325 (33.65)	
21	1.520 (38.61)	1.460 (37.08)	
	1.510 (38.35)	1.450 (36.83)	
23	1.645 (41.78)	1.585 (40.26)	
	1.635 (41.53)	1.575 (40.00)	
25	1.770 (44.96)	1.710 (43.43)	
	1.760 (44.70)	1.700 (43.18)	

