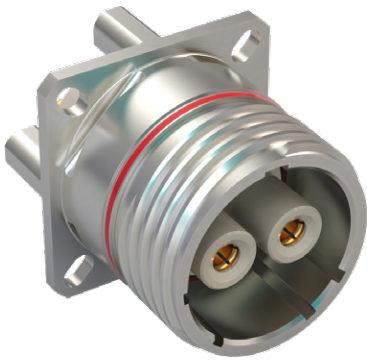


973-006 SuperNine Series III PowerPlay with PC Tail Contacts
00, D0, CS Panel-Mount Receptacle Connectors

SUPERNINE SERIES III POWERPLAY TRIPLE-START



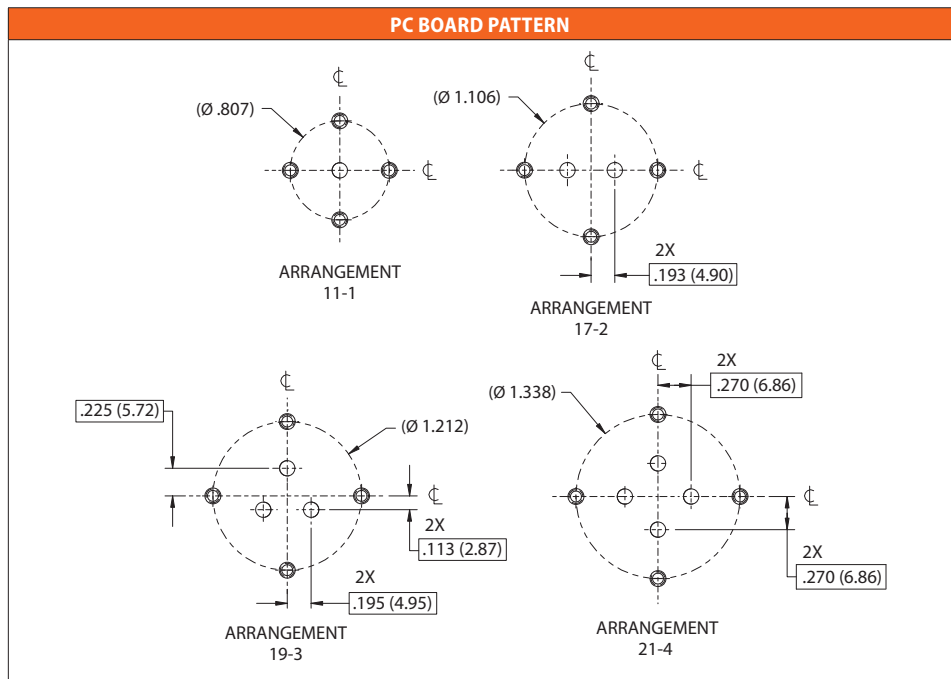
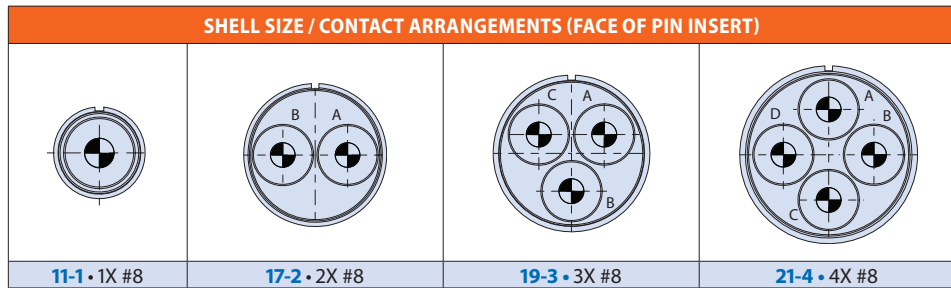
HOW TO ORDER	
Sample Part Number	973-006 00 ME 17-2 P N
Basic Part Number	38999 Power Connector
Connector Style	00 = Receptacle, Panel-Mount with Slotted Holes D0 = Receptacle, Panel-Mount with Round Holes CS = Receptacle, Panel-Mount with Standard Clinch Nuts
Material/Finish	NF = Aluminum, CAD/O.D. Over Electroless Nickel MT = Aluminum, Nickel-PTFE ME = Aluminum, Electroless Nickel TZ = Aluminum, Tin Zinc Z1 = Stainless Steel, Passivated
Shell Size/ Insert Arrangement	See Contact Arrangements Table
Contact Style	P = Pin Contact S = Socket Contact
Polarization Position	A, B, C, D, E, N = Normal

MATERIAL/FINISH

- Shell / jam nut: per How to Order table
- Interfacial / O-ring seal: silicone blend
- Contacts: copper alloy / gold
- Insulator: High-Temp composite

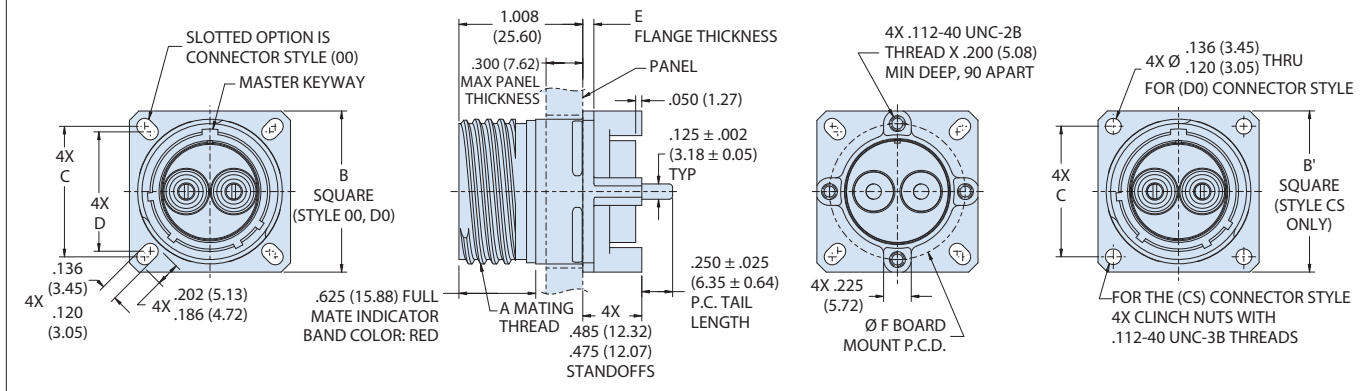
NOTES

- Panel-Mount and jam nut PC tail receptacles 973-006 mate with 973-001 plugs having the same size, layout, polarization, and opposite contact gender.
- Pin contacts with protective tip and installed socket contacts are finger-proof to IEC 60529 level IP2X (rated voltages not exceeding 1,000 VAC or 1500 VDC). Contacts are Glenair high conductivity Crown Ring contacts.
- Electrical Performance:
 - DWV: 5000 VAC pin-pin and pin-shell (sea level) (DWV value pertains to connector interface and insert. It is up to the end user to ensure the board side is suitably insulated)
 - Insulation resistance: 5000 megohm min at 500 VDC



973-006 SuperNine Series III PowerPlay with PC Tail Contacts
00, D0, CS Panel-Mount Receptacle Connectors

00, D0, AND CS PANEL-MOUNT RECEPTACLE DIMENSIONS



Shell Size	A Thread	B	B'	C Basic	D Basic	E	Ø F
11	.7500-1P-3L-TS-2A	1.043 (26.49) 1.019 (25.88)	1.136 (28.85) 1.096 (27.84)	0.812 (20.62)	0.719 (18.26)	.090 (2.29)	0.807 (20.50)
17	1.1875-1P-3L-TS-2A	1.323 (33.60) 1.299 (32.99)	1.386 (35.20) 1.346 (34.19)	1.062 (26.97)	.969 (24.61)		1.106 (28.09)
19	1.2500-1P-3L-TS-2A	1.449 (36.80) 1.425 (36.20)	1.480 (37.59) 1.440 (36.58)	1.156 (29.36)	1.062 (26.97)		1.212 (30.78)
21	1.3750-1P-3L-TS-2A	1.575 (40.00) 1.551 (39.40)	1.574 (39.98) 1.534 (38.96)	1.250 (31.75)	1.156 (29.36)		.120 (3.05)

POLARIZATION KEYS AND KEYWAYS

Shell Size	Polarization Code	Minor Key/Keyway Rotation			
		A°	B°	C°	D°
11	N	95	141	208	236
	A	113	156	182	292
	B	90	145	195	252
	C	53	156	220	255
	D	119	146	176	298
	E	51	141	184	242
	F	77	141	220	273
17	G	66	156	176	236
	N	80	142	196	293
	A	135	170	200	310
	B	49	169	200	244
	C	66	140	200	257
	D	62	145	180	280
	E	79	153	197	272
25	F	95	150	180	235
	G	115	157	185	270

PANEL CUT OUT FOR PANEL-MOUNT RECEPTACLES

Shell Size	Ø G	H Basic	J Holes
11	0.796 (20.22)	0.812 (20.62)	0.133 (3.38) 0.123 (3.12)
17	1.219 (30.96)	1.062 (26.97)	
19	1.297 (32.94)	1.156 (29.36)	
21	1.422 (36.12)	1.250 (31.75)	