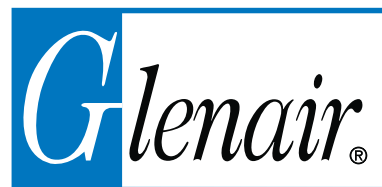


Series 970 PowerTrip™ Connectors and Accessories

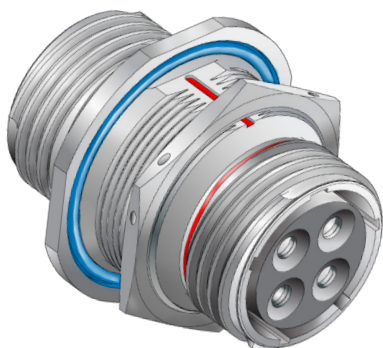
Bulkhead Feed-thru Connector

970-006



Receptacle
Connectors

970-006 BULKHEAD FEED-THRU CONNECTOR



Series 970 PowerTrip™ jam-nut mount bulkhead feed-thru connectors have pin contacts on one side and socket contacts on the other side. Mount to bulkhead and attach mating plug connectors to both sides. Coupling threads are triple-start ACME type. Contacts are factory-installed and are non-removable. Standard contacts are silver plated high conductivity copper alloy for excellent conductivity, or choose gold-plated contacts for improved corrosion protection. Jam-nut mount available for panel thicknesses from 1/16 inch (1.58mm) up to 1.4 inches (35.56mm).

- High Current Contacts
- Harsh Environment

PRODUCT FACTS

2000 VAC Sea Level DWV Rating
-65°C to +200°C Operating Temperature
6 Feet Water Immersion, 48 Hours
65 dB min. Attenuation, up to 10GHz
500 Cycles Mating Durability
MIL-S 901 Grade A High-Impact Shock
43 g Random Vibration

HOW TO ORDER

SERIES	SHELL MATL AND FINISH	SHELL SIZE - INSERT ARRANGEMENT						CONTACT TYPE	CONTACT PLATING	PANEL THICKNESS	KEY POSITION	
970-006 Series 970 Bulkhead Feed-Thru Connector, with Jam-nut Mounting	ME Aluminum, Electroless Nickel Finish	Cont. Arr.	Contact Size and Qty					P Pin Contacts on Jam-nut Side	1 Silver Plated Power Contacts (size 1/0, 4 and 8) and Gold Plated Signal Contacts	BLANK (Standard) .500 in max panel thickness	-1 Position 1	
			#16	#12	#8	#4	#1/0					-2 Position 2
		18-2			2							
		18-4		2	2							
		20-3			3							
		20-4			4							
	MT Aluminum, Nickel-PTFE Finish	20-5		2	3							
		20-7	4		3							
		24-2				2						
		24-3				3						
		24-5			5							
		24-6		4		2						
	NF Aluminum, Olive Drab Cadmium	24-A6		3		3						
		28-4				4						
		28-8		1	7							
		28-9	5			4						
		28-15	15									
		Z1 Passivated Stainless Steel	32-2					2				
	32-3						3					
	32-4					2	2					
	32-5					5						
	32-6			3			3					
	32-20		1	19								
	36-4						4					
	36-16		3		13							
	40-5						5					
	40-21				21							
Sample Part Number												
970-006	MT		24-5					P	1		-1	

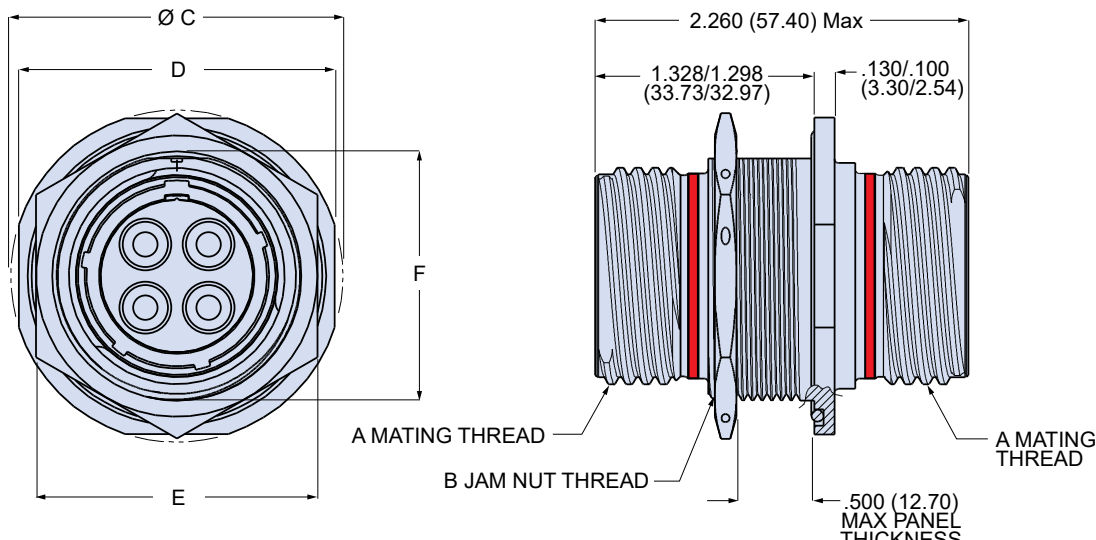


Series 970 PowerTrip™ Connectors and Accessories

Bulkhead Feed-thru Connector

970-006

970-006 HERMETIC BULKHEAD FEED-THRU CONNECTOR

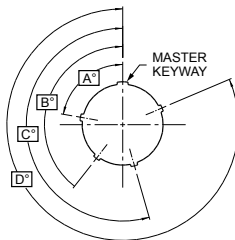


DIMENSIONS

Shell Size	A Mating Thd.	B Jam-nut Thd.	Ø C		D		E		F	
			In.	mm.	In.	mm.	In.	mm.	In.	mm.
18	1.125-.1P-.3L-TS-2A	1.250-18 UNEF-2A	1.733	44.02	1.639	41.63	1.438	36.53	1.212	30.78
20	1.250-.1P-.3L-TS-2A	1.4375-18 UNEF-2A	1.921	48.79	1.827	46.41	1.625	41.28	1.399	35.53
24	1.500-.1P-.3L-TS-2A	1.625-18 UNEF-2A	2.108	53.54	2.014	51.16	1.822	46.28	1.587	40.31
28	1.750-.1P-.3L-TS-2A	1.9375-16 UN-2A	2.425	61.60	2.327	59.11	2.188	55.58	1.899	48.23
32	2.000-.1P-.3L-TS-2A	2.125-16 UN-2A	2.607	66.24	2.513	63.86	2.375	60.33	2.084	53.01
36	2.250-.1P-.3L-TS-2A	2.375-16 UN-2A	2.857	72.57	2.763	70.18	2.625	66.68	2.323	59.00
40	2.500-.1P-.3L-TS-2A	2.625-16 UN-2A	3.107	78.92	3.013	76.53	2.875	73.03	2.548	64.72

KEY POSITIONS

Position	A°	B°	C°	D°
1	80	142	196	293
2	135	170	200	310
3	49	169	200	244
4	66	140	200	257
5	62	145	180	280
6	79	153	197	272



PANEL CUTOUT

Shell Size	Diameter		Flat	
	In.	mm.	In.	mm.
	+0.010 -0.000	+0.25 -0.00	+0.010 -0.000	+0.25 -0.00
18	1.265	32.13	1.217	30.91
20	1.452	36.88	1.409	35.79
24	1.640	41.66	1.596	40.54
28	1.952	49.58	1.910	48.51
32	2.140	54.36	2.092	53.14
36	2.390	60.71	2.342	59.49
40	2.640	67.06	2.557	64.95

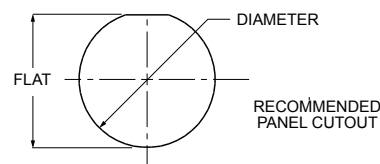


TABLE III: PANEL THICKNESS

Panel Option	J Max		K		L Max	
	In.	mm.	In.	mm.	In.	mm.
Blank (std.)	.500	12.70	1.328/1.298	33.73/32.97	2.260	57.40
B	.950	24.13	1.801/1.771	45.75/44.98	2.733	69.42
C	1.400	35.56	2.274/2.244	57.76/57.00	3.206	81.43