

BACKSHELLS AND ACCESSORIES FOR SERIES 970 CONNECTORS



Shrink Boot Adapters

These spin-coupling adapters are available in straight, 45° and 90° versions. Use with unshielded cable.

310-001 Page 52



EMI Band-Master™ Adapters

These spin-coupling banding adapters have a knurled platform for EMI shield attachment and boot groove.

440-069 Page 58



Heatshrink Boots

Rugged boots provide strain relief and environmental protection. Available in low-toxicity material.

770-003 Page 54



Strain Relief Clamp

Open frame cable clamp is designed for use with large, heavy power cable.

Optional wire support bushing.

620PS076 Page 56



Submersible Backshell

Heavy duty environmental backshell features saddle clamp or wire mesh cordgrip for strain relief.

370-024 Page 60



EMI/RFI Backshell

Non-environmental backshell with ground rings for cable shield termination, heavy duty saddle bar clamp.

380-105 Page 64



Submersible EMI Backshell

Heavy duty environmental backshell features ground rings, silicone O-rings and cable gland.

390-055 Page 67



Submersible EMI Backshell

MIL-DTL-28840 type heavy duty backshell, straight exit, with saddle bar strain relief.

390PS036 Page 72



Submersible EMI Backshell

MIL-DTL-28840 type heavy duty backshell, straight exit, with wire mesh cord grip.

390PS086 Page 70



Protective Covers

Thread-on metal covers with a variety of attachments.

660PS097/098

Page 76

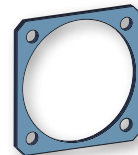


Bean Rubber Covers

Black rubber covers with multiple attachment styles.

780-001/002

Page 79



Mounting Gaskets

Elastomeric gaskets for square flange receptacles.

930-014

Page 74