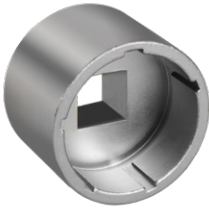
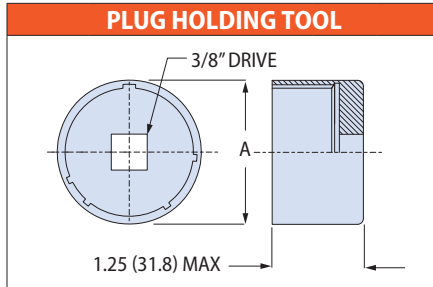




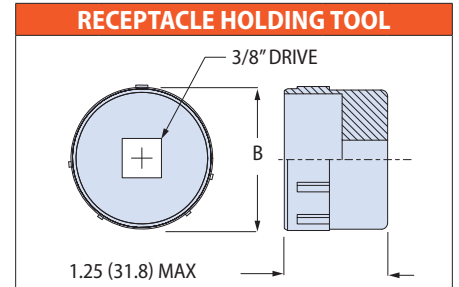
600P005 CONNECTOR HOLDING TOOL



Holding tool prevents rotation of connector when installing backshell or adapter. 3/8" square drive. Fits Series 970 PowerTrip® connectors. Heat-treated steel with nickel plating.



Shell Size	Part Number	A Max	
		in	mm
18	600P005-18P*	1.075	27.3
20	600P005-20P*	1.220	31.0
24	600P005-24P*	1.450	36.8
28	600P005-28P*	1.700	43.2
32	600P005-32P*	1.950	49.5
36	600P005-36P*	2.200	55.9
40	600P005-40P*	2.450	62.2



Shell Size	Part Number	B Max	
		in	mm
18	600P005-18R*	.870	22.1
20	600P005-20R*	1.035	26.3
24	600P005-24R*	1.220	31.0
28	600P005-28R*	1.515	38.5
32	600P005-32R*	1.740	44.2
36	600P005-36R*	1.990	50.5
40	600P005-40R*	2.240	56.9

Replace * with polarizing position 1, 2, 3, 4, 5, or 6

BACKSHELL ASSEMBLY TOOLS

Glenair assembly tools accomplish proper tightening of adapters and backshells. Torque wrenches, soft jaw pliers, strap wrenches, and circular wrenches speed up assembly and prevent damage to connectors and backshells.



Interconnect Cable Assembly Tools Catalog has assembly tools, shield termination tools, fiber optic termination tools. Contact Glenair or go to www.glenair.com.



600G161 Digital Torque Wrench with 600-162BW vertical bench mount stand (sold separately)