

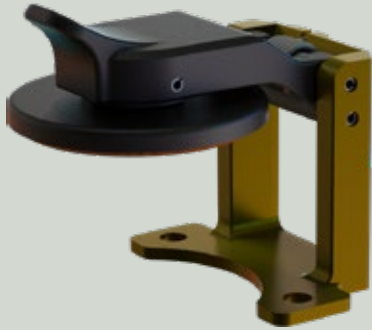
SPRING ACTION

ProSeal™ environmental connector covers

for MIL-DTL-26482 Series I and II connectors
Pressure seal, dust and immersion resistant

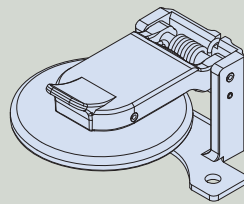


667-472 PROSEAL PROTECTIVE COVER FOR MIL-DTL-26482 SERIES I AND II CONNECTORS

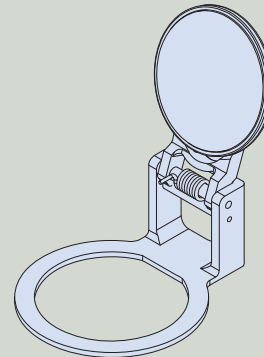


How to Order 667-472					
Sample Part Number	667-472	NF	16	T1	W
Series	ProSeal protective cover for MIL-DTL-26482 Series I and II				
Material / Finish	See Table II				
Shell Size	See Table I				
Panel Thickness	See Table III				
Type of Mounting	J = Jam Nut Mount Receptacle (not available with Panel Thickness T0) W = Wall Mount Receptacle				

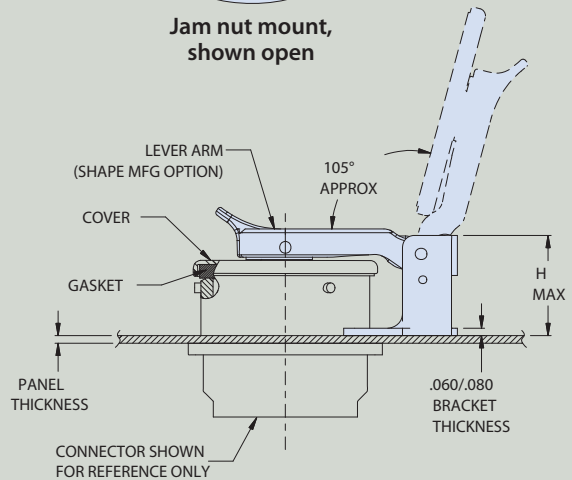
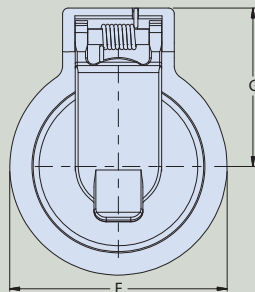
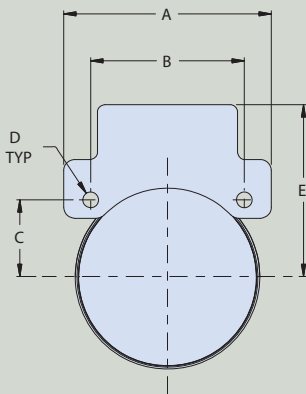
- Pressure seal, dust and immersion resistant
- Self-aligning
- Positive spring-action in closed position. Locks open at approximately 105° from receptacle face.



Wall mount, shown closed



Jam nut mount, shown open



MATERIAL / FINISH

Cover, Lever Arm, Gimbal - Thermoplastic / Black
Bracket - see Table II
Spring / Pin / Rivet - 300 Series SST / Passivate
Sleeve - Delrin
Gasket - Silicone (optional)



Table I: Dimensions														
Shell Size	A Dim max		B Dim		C Dim		D ±.010 (.25)		E max		F ±.031 (.79)		G max	
	in	mm	in	mm	in	mm	in	mm	in	mm	in	mm	in	mm
08	.967	24.56	0.594	15.0	.297	7.54	.120	3.05	.841	21.36	.850	21.59	.826	20.98
10	1.061	26.95	0.719	18.26	.360	9.14	.120	3.05	.903	22.94	1.000	25.40	.901	22.89
12	1.156	29.36	0.812	20.62	.406	10.31	.120	3.05	.966	24.54	1.188	30.18	.995	25.27
14	1.250	31.75	0.906	23.01	.453	11.51	.120	3.05	1.034	26.26	1.310	33.27	1.056	26.82
16	1.341	33.89	0.969	24.61	.485	12.32	.120	3.05	1.113	28.27	1.500	38.10	1.151	29.24
18	1.467	37.26	1.062	26.97	.531	13.49	.120	3.05	1.149	29.18	1.625	41.28	1.514	38.46
20	1.593	40.46	1.156	29.36	.578	14.68	.120	3.05	1.365	34.67	1.750	44.45	1.410	35.81
22	1.719	43.66	1.250	31.75	.625	15.88	.120	3.05	1.429	36.30	1.875	47.63	1.473	37.41
24	1.841	46.76	1.375	34.93	.688	17.48	.147	3.73	1.491	37.87	2.062	52.37	1.566	39.78

Table II: Material and Finish		
Sym	Material	Finish
MT	Aluminum	Nickel-PTFE
ZR		Zinc-Nickel, Black (Tri-Valent CR)
M		Electroless Nickel
NF		Cad Plate / Olive Drab over Electroless Nickel
C		Anodize / Black
UC		Zinc Cobalt / Black

Table III: Panel Thickness							
Dash No.	Panel Thickness ±.030 (.76)		Shell Size	H Max			
	in	mm		Wall Mount		Jam Nut Mount	
				in	mm	in	mm
T0	.000	.00	08-18	.718	18.24	N/A	
			20-22	.946	24.03		
			24	.987	25.07		
T1	.062	1.57	08-18	.656	16.66	.935	23.75
			20-22	.876	22.25	1.238	31.45
			24	.925	23.50	1.341	34.06
T2	.125	3.18	08-18	N/A	N/A	.875	22.23
			20-22	.814	20.68	1.178	29.92
			24	.863	21.92	1.218	30.94

MIL-DTL-26482