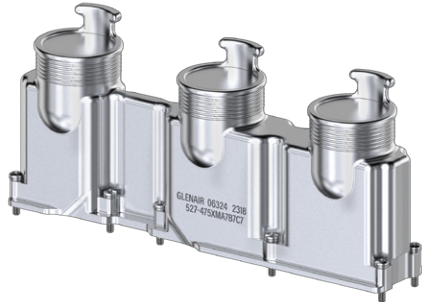


527-475

ARINC 600 Size 1 Backshell, EMI Banding Composite

- Lightweight Composite
- Banding Shield Termination
- Qwik-Ty Strain Relief

ARINC 600 / M83527 ACCESSORIES



527-475

This composite EMI backshell fits ARINC 600 Size 1 connectors.

Terminate cable braid shields to backshell with Band-Master ATS banding straps. Backshell attaches to connector insert retainer plate threaded holes (see Connector Compatibility note). Thermoplastic with stainless steel hardware.

CONNECTOR COMPATIBILITY

Connector Designator P6

Remove insert retainer plate from connector. Attach backshell to connector plate threaded holes.

PART NUMBER	
Sample PN →	527-475 XM A5 B4 C3 S J
Base P/N	527-475
Finish	XM Electroless Nickel XW Olive Drab Cadmium
Connector Code	Omit All Connectors except: P6 ITT Cannon BKAC & BKAE Envir. Plug
Port A Entry Size	A2 A3 A4 A5 A6 A7 See Table 1
Port B Entry Size	B2 B3 B4 B5 B6 B7 See Table 1
Port C Entry Size	C2 C3 C4 C5 C6 C7 See Table 1
Slots	Omit No Slots S Slots
EMI Gasket	Omit No Gasket 1 Gasket Included (Qty 2)
Qwik-Ty	Omit Qwik-Ty Strain Relief Arm Included L Less Qwik-Ty Arm
Band	Omit No Band B Standard Bands Included J Slim Standard Bands Included

TABLE 1 ENTRY SIZE

Entry Size	Entry Diameter		L		M Max	
	in	mm	in	mm	in	mm
2	.25	6.4	.22	5.6	.475	12.1
3	.38	9.7	.28	7.1	.605	15.4
4	.50	12.7	.33	8.4	.725	18.4
5	.63	16.0	.42	10.7	.855	21.7
6	.75	19.1	.50	12.7	.975	24.8
7	.87	22.1	.60	15.2	1.095	27.8

BAND OPTIONS

Terminate cable braid to backshell with optional band strap and banding tool. Pre-coiled bands are passivated stainless steel. Slim Standard bands have reduced thickness for weight reduction.

Band Type and Width	Hand Tool	Pneumatic Tool
Standard: .24 (6.1)	601-100	601-106
Slim Standard: .24 (6.1)	601-109	601-110

