

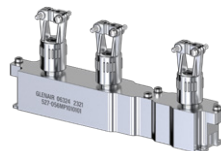
ARINC 600/ M83527 Backshell Selection Guide

ARINC 600 / M83527 ACCESSORIES

ARINC 600 Size 1 Backshells



Strain Relief + Braid Socket
527-257
Page D-3



EMI Cone-and-Ring
527-056
Page D-5



EMI Banding Composite
527-475
Page D-6

ARINC 600 Size 2 Backshells



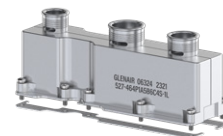
Strain Relief
527-149
Page D-7



EMI Cone-and-Ring
527-025
Page D-8



EMI TAG Ring®
527-071
Page D-9



EMI Banding Composite
527-464
Page D-10

ARINC 600 Size 3 Backshells



Strain Relief
527-126
Page D-11



EMI TAG Ring®
527-199
Page D-12



EMI Banding
527-216
Page D-13

MIL-DTL-83527 Backshells



M25, M28 Threads
527-114
Page D-14



EMI Banding
527-543
Page D-15