

# D-Subminiature

## 289-005

### Banding Backshell, HiPer-D

- Split EMI Backshell
- Banding Shield Termination
- For Series 28 HiPer-D with Groove



**T** Top Entry



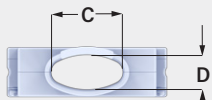
**S** Side Entry

Lightweight, low profile space-saving two piece backshell fits HiPer-D® connectors with backshell groove (280-018P, 280-019S, 280-046P, 280-047S). Terminate cable shield with optional clamping band. Elliptical cable entry provides room for large wire bundles. Non-environmental. Aluminum alloy, passivated stainless steel hardware.

### 289-005

This accessory fits HiPer-D connectors with backshell groove.





**TABLE 1**  
ENTRY SIZE



Shell Size	Entry Size	C		D	
		in	mm	in	mm
1	A	.143	3.6	.143	3.6
	B	.195	5.0	.195	5.0
	C	.242	6.2	.242	6.2
	D	.438	11.1	.375	9.5
	E	.638	16.2	.375	9.5
2	A	.188	4.8	.188	4.8
	B	.256	6.5	.256	6.5
	C	.480	12.2	.375	9.5
	D	.688	17.5	.375	9.5
	E	.969	24.6	.375	9.5
3	A	.245	6.2	.245	6.2
	B	.550	14.0	.375	9.5
	C	.780	19.8	.375	9.5
	D	1.125	28.6	.375	9.5
	E	1.484	37.7	.375	9.5
4	A	.291	7.4	.291	7.4
	B	.800	20.3	.375	9.5
	C	1.260	32.0	.375	9.5
	D	1.813	46.1	.375	9.5
	E	2.155	54.7	.375	9.5
5	A	.326	8.3	.326	8.3
	B	.770	19.6	.485	12.3
	C	1.250	31.8	.485	12.3
	D	1.750	44.5	.485	12.3
	E	2.031	51.6	.485	12.3
6	A	.376	9.6	.376	9.6
	B	.863	21.9	.550	14.0
	C	1.323	33.6	.550	14.0
	D	1.875	47.6	.550	14.0
	E	2.165	55.0	.550	14.0

### PART NUMBER

Sample PN → **289T005** **ME** **3** **A** **T** **S** **K**

<b>Base P/N</b>	<b>289T005</b> <b>T</b> Top Entry <b>289S005</b> <b>S</b> Side Entry
<b>Finish</b>	<b>TZ</b> Tin-Zinc <b>MN</b> MegaNickel <b>JF</b> Cadmium, Yel. Chromate <b>M</b> Electroless Nickel <b>NF</b> Olive Drab Cadmium <b>MT</b> Nickel-PTFE <b>ZR</b> Black Zinc-Nickel
<b>Shell Size</b>	<b>1 2 3 4 5 6</b>
<b>Entry Size</b>	<b>A B C D E</b> See Table 1
<b>Qwik-Ty</b>	<b>N</b> No Qwik-Ty Strain Relief Arm <b>T</b> Qwik-Ty Arm Included 
<b>Slots</b>	<b>N</b> No Slots <b>S</b> Slots in Banding Area 
<b>Band</b>	<b>Omit</b> No Band <b>K</b> Standard Band Included <b>J</b> Slim Standard Band Included
<b>Entry Direction</b>	Applies to 289S005 Side Entry Omit for 289T005 Top Entry <b>1</b> Direction 1  <b>2</b> Direction 2 

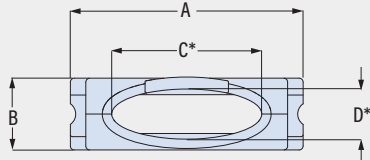
# D-Subminiature

## 289-005

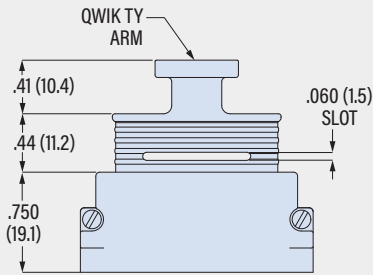
### Banding Backshell, HiPer-D

- Split EMI Backshell
- Banding Shield Termination
- For Series 28 HiPer-D with Groove

#### 289T005 TOP ENTRY

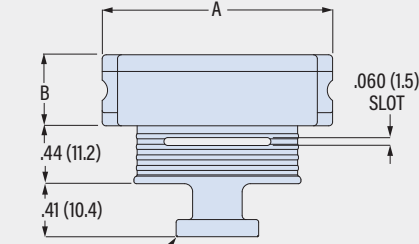


\*SEE TABLE 1 FOR C AND D DIM.

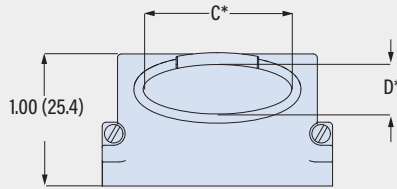


Shell Size	A Max		B Max	
	in	mm	in	mm
1	.894	22.7	.550	14.0
2	1.218	30.9	.550	14.0
3	1.760	44.7	.550	14.0
4	2.408	61.2	.550	14.0
5	2.297	58.3	.654	16.6
6	2.422	61.5	.716	18.2

#### 289S005 SIDE ENTRY



QWIK TY ARM



\*SEE TABLE 1 FOR C AND D DIM.

Shell Size	A Max		B Max	
	in	mm	in	mm
1	.894	22.7	.550	14.0
2	1.218	30.9	.550	14.0
3	1.760	44.7	.550	14.0
4	2.408	61.2	.550	14.0
5	2.297	58.3	.654	16.6
6	2.422	61.5	.716	18.2

#### BAND OPTIONS

Terminate cable braid to backshell with optional band strap and banding tool. Pre-coiled bands are passivated stainless steel. Slim Standard bands have reduced thickness for weight reduction.



Band Type and Width	Hand Tool	Pneumatic Tool
Standard: .24 (6.1)	601-100	601-106
Slim Standard: .24 (6.1)	601-109	601-110