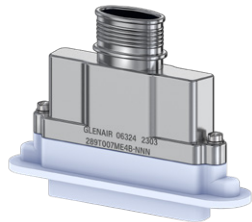


# D-Subminiature

## 289-007

### Panel Mount Banding Backshell, HiPer-D

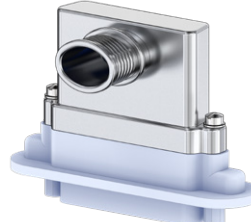
- EMI Backshell
- Banding Shield Termination
- For Panel Mount Series 28 HiPer-D



**T** Top Entry



**B** 45° Entry



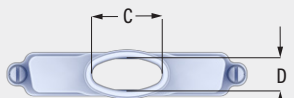
**S** Side Entry

Lightweight banding adapter fits HiPer-D® panel mount connectors with threaded accessory mounting holes (280-020, 280-021, 280-048, 280-049). Environmentally protected with gasket. Terminate cable shield with optional Band-Master® ATS clamping band. Elliptical cable entry provides room for large wire bundles. Compatible with Glenair Series 77 lipped heat-shrink boots. Aluminum alloy, stainless steel screws and washers, fluorosilicone gasket.

### 289-007

This accessory fits HiPer-D panel mount connectors:  
280-020, 280-021, 280-048, 280-049

**TABLE 1**  
ENTRY SIZE



Shell Size	Entry Size	C		D	
		in	mm	in	mm
1	A	.143	3.6	.143	3.6
	B	.195	5.0	.195	5.0
	C	.242	6.2	.242	6.2
	D	.438	11.1	.375	9.5
	E	.625	15.9	.375	9.5
2	A	.188	4.8	.188	4.8
	B	.256	6.5	.256	6.5
	C	.480	12.2	.375	9.5
	D	.688	17.5	.375	9.5
	E	.938	23.8	.375	9.5
3	A	.245	6.2	.245	6.2
	B	.550	14.0	.375	9.5
	C	.780	19.8	.375	9.5
	D	1.125	28.6	.375	9.5
	E	1.438	36.5	.375	9.5
4	A	.291	7.4	.291	7.4
	B	.800	20.3	.375	9.5
	C	1.260	32.0	.375	9.5
	D	1.813	46.1	.375	9.5
	E	2.125	54.0	.375	9.5
5	A	.326	8.3	.326	8.3
	B	.770	19.6	.485	12.3
	C	1.250	31.8	.485	12.3
	D	1.750	44.5	.485	12.3
	E	2.00	50.8	.485	12.3
6	A	.376	9.6	.376	9.6
	B	.863	21.9	.550	14.0
	C	1.323	33.6	.550	14.0
	D	1.875	47.6	.550	14.0
	E	2.125	54.0	.550	14.0

### PART NUMBER

Sample PN → **289T007 ME 4 D T S K**

**Base P/N**  
**289T007** **T** Top Entry  
**289S007** **S** Side Entry  
**289B007** **B** 45° Entry

**Finish**  
**TZ** Tin-Zinc  
**MN** MegaNickel  
**JF** Cadmium, Yel. Chromate  
**M** Electroless Nickel  
**NF** Olive Drab Cadmium  
**MT** Nickel-PTFE  
**ZR** Black Zinc-Nickel

**Shell Size** **1 2 3 4 5 6**

**Entry Size** **A B C D E** See Table 1

**Qwik-Ty**  
**N** No Qwik-Ty Strain Relief Arm  
**T** Qwik-Ty Arm Included



**Slots**  
**N** No Slots  
**S** Slots in Banding Area



**Band**  
**Omit** No Band  
**K** Standard Band Included  
**J** Slim Standard Band Included

**Entry Direction**  
*Applies to 289S005 Side Entry*  
*Omit for 289T005 Top Entry*  
**1** Direction 1  
**2** Direction 2



# D-Subminiature

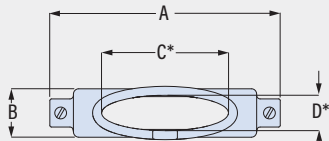


## 289-007

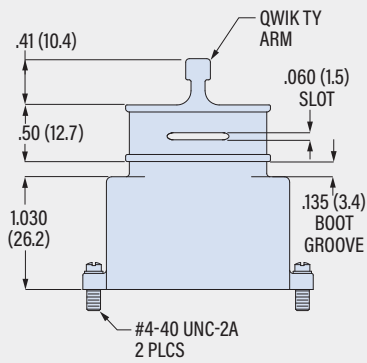
### Panel Mount Banding Backshell, HiPer-D

- EMI Backshell
- Banding Shield Termination
- For Panel Mount Series 28 HiPer-D

#### 289T007 TOP ENTRY

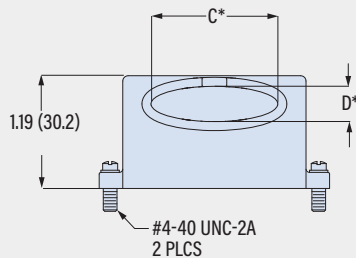
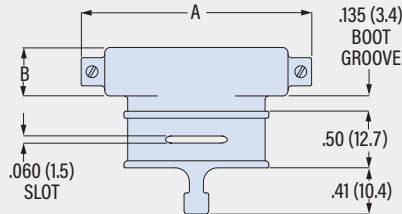


\*SEE TABLE 1 FOR C AND D DIM.



Shell Size	A Max		B Max	
	in	mm	in	mm
1	1.244	31.6	.526	13.4
2	1.572	39.9	.526	13.4
3	2.112	53.6	.526	13.4
4	2.760	70.1	.526	13.4
5	2.666	67.7	.628	16.0
6	2.760	70.1	.690	17.5

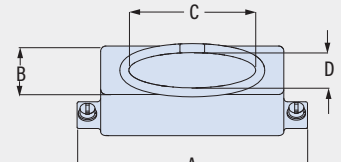
#### 289S007 SIDE ENTRY



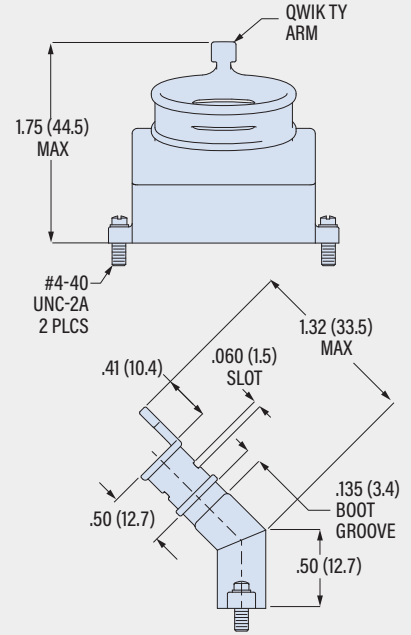
\*SEE TABLE 1 FOR C AND D DIM.

Shell Size	A Max		B Max	
	in	mm	in	mm
1	1.244	31.6	.526	13.4
2	1.572	39.9	.526	13.4
3	2.112	53.6	.526	13.4
4	2.760	70.1	.526	13.4
5	2.666	67.7	.628	16.0
6	2.760	70.1	.690	17.5

#### 289B007 45° ENTRY



\*SEE TABLE 1 FOR C AND D DIM.



Shell Size	A Max		B Max	
	in	mm	in	mm
1	1.244	31.6	.526	13.4
2	1.572	39.9	.526	13.4
3	2.112	53.6	.526	13.4
4	2.760	70.1	.526	13.4
5	2.666	67.7	.628	16.0
6	2.760	70.1	.690	17.5

#### BAND OPTIONS

Terminate cable braid to backshell with optional band strap and banding tool. Pre-coiled bands are passivated stainless steel. Slim Standard bands have reduced thickness for weight reduction.



Band Type and Width	Hand Tool	Pneumatic Tool
Standard: .24 (6.1)	601-100	601-106
Slim Standard: .24 (6.1)	601-109	601-110

D-SUBMINIATURE ACCESSORIES