

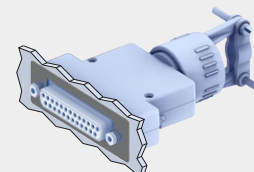
# D-Subminiature

## 550-009

### Shrouded Backshell, Rear Panel Mount

- Rear Panel Mount
- Cone-and-Ring Shield Termination
- Saddle Clamp Strain Relief

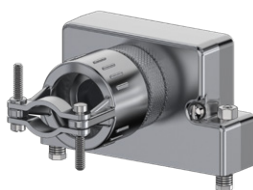
#### REAR PANEL MOUNTING



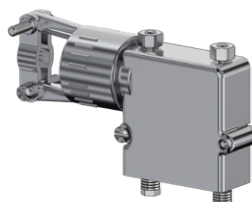
**FOR REAR-MOUNTED CONNECTORS ONLY**  
BACKSHELL ATTACHES TO INSIDE OF PANEL WITH FEMALE SCREWLOCKS (INCLUDED).



**T** Top Entry



**S** Side Entry



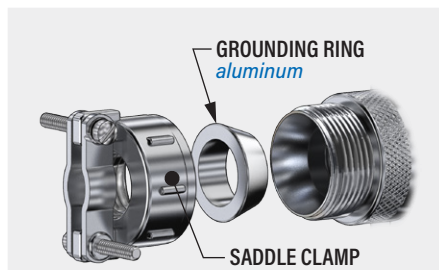
**E** End Entry

#### 550-009

This accessory fits D-Subminiature M24308 connectors.  
Not compatible with Series 28 HiPer-D

For rear panel mounted connectors, Cone-and-Ring shield termination. 550-009 diecast aluminum backshell fits rear panel mounted M24308 D-Subminiature connectors. EMI protected. Cable shield attaches to backshell with ground ring. For panel thicknesses up to 3/16 inch (4.8mm). Optional metalastic EMI panel gasket. Connector fits into groove between backshell halves. #4-40 female screwlocks are included. Aluminum with stainless steel screws and washers.

#### CONE-AND-RING SHIELD TERMINATION



Fold braid over grounding ring. Tighten clamp onto backshell to captivate braid.

#### PART NUMBER

Sample PN → **550T009 M 3 R3 L 0**

Base P/N	Base Part No.	Profile
	<b>550T009</b>	<b>T</b> Top Entry
	<b>550E009</b>	<b>E</b> End Entry
	<b>550S009</b>	<b>S</b> Side Entry

Finish	Code	Material
	<b>TZ</b>	Tin-Zinc
	<b>MN</b>	MegaNickel
	<b>JF</b>	Cadmium, Yel. Chromate
	<b>M</b>	Electroless Nickel
	<b>NF</b>	Olive Drab Cadmium
	<b>MT</b>	Nickel-PTFE
	<b>ZR</b>	Black Zinc-Nickel

Shell Size	Code
1	<b>1</b>
2	<b>2</b>
3	<b>3</b>
4	<b>4</b>
5	<b>5</b>
6	<b>6</b>

Panel Thickness	Code	Panel Thickness
	<b>R1</b>	.031 (0.8)
	<b>R2</b>	.047 (1.2)
	<b>R3</b>	.062 (1.6)
	<b>R4</b>	.093 (2.4)
	<b>R5</b>	.104 (2.6)
	<b>R6</b>	.125 (3.2)
	<b>R7</b>	.156 (4.0)
	<b>R8</b>	.135 (3.4)
	<b>R9</b>	.188 (4.8)

Strain Relief	Code	Material
	<b>F</b>	Saddle Clamp
	<b>G</b>	Gland Nut

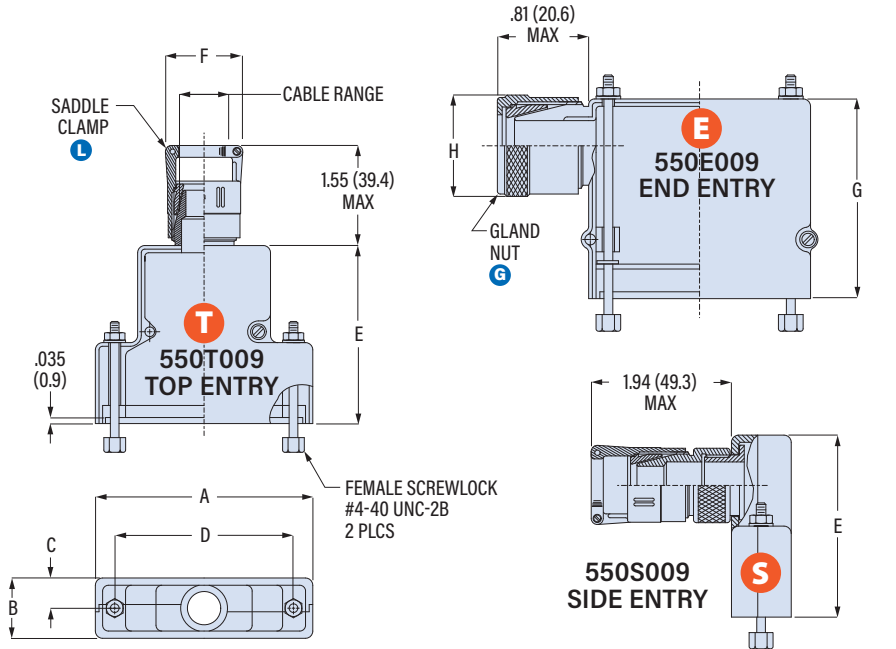
EMI Gasket	Code	Description
	<b>0</b>	No Gasket
	<b>1</b>	Gasket Included (install on mating connector)

# D-Subminiature

## 550-009

### Shrouded Backshell, Rear Panel Mount

- Rear Panel Mount
- Cone-and-Ring Shield Termination
- Saddle Clamp Strain Relief

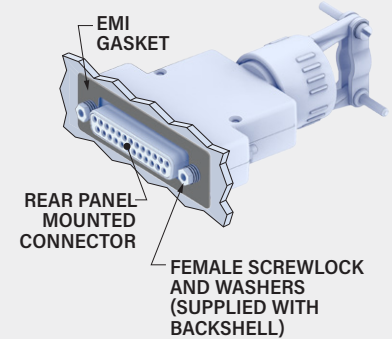


Shell Size	A Max		B Max		C		D ±.005 (0.13)		E		F Max		G		H Max	
	in	mm	in	mm	in	mm	in	mm	in	mm	in	mm	in	mm	in	mm
1	1.393	35.4	.624	15.8	.312	7.9	.984	25.0	1.320	33.5	1.046	26.6	1.460	37.1	.843	21.4
2	1.706	43.3	.624	15.8	.312	7.9	1.312	33.3	1.320	33.5	1.046	26.6	1.460	37.1	.843	21.4
3	2.265	57.5	.624	15.8	.312	7.9	1.852	47.0	1.540	39.1	1.156	29.4	1.710	43.4	.968	24.6
4	2.900	73.7	.624	15.8	.312	7.9	2.500	63.5	1.540	39.1	1.156	29.4	1.710	43.4	.968	24.6
5	2.800	71.1	.750	19.1	.375	9.5	2.406	61.1	1.540	39.1	1.218	30.9	1.710	43.4	1.109	28.2
6	2.900	73.7	.844	21.4	.422	10.7	2.500	63.5	1.690	42.9	1.594	40.5	1.710	43.4	1.468	37.3

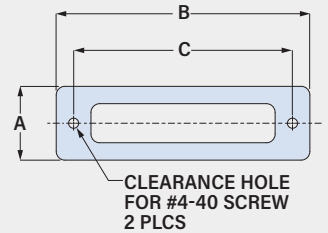
Shell Size	Cable Range							
	Profile S, T				Profile E			
	Min	Max	Min	Max	Min	Max	Min	Max
1	.125	3.2	.250	6.4	.250	6.4	.375	9.5
2	.250	6.4	.375	9.5	.250	6.4	.375	9.5
3	.312	7.9	.475	12.1	.312	7.9	.475	12.1
4	.312	7.9	.475	12.1	.312	7.9	.475	12.1
5	.437	11.1	.575	14.6	.437	11.1	.575	14.6
6	.812	20.6	1.000	25.4	.812	20.6	1.000	25.4

### EMI PANEL GASKET

Install gasket on front side of panel. When the mating backshell is fastened to the panel connector, the front edge of the backshell seats onto the gasket for aperture-free EMI protection.



**EMI PANEL GASKET**  
.020 (0.5) THICK  
MATL: ALUMINUM MESH EMBEDDED IN SILICONE



Shell Size	Gasket Part No.	A	B	C
1	559-002-1	.740	18.8	1.500
2	559-002-2	.740	18.8	1.810
3	559-002-3	.740	18.8	2.380
4	559-002-4	.740	18.8	3.010
5	559-002-5	.850	21.6	2.920
6	559-002-6	.925	23.5	3.010

D-SUBMINIATURE ACCESSORIES

### PANEL COUNTERBORE DIMENSIONS

Panel Thk. Code	Panel Thickness	ø B				No. of Washers	
		A Counterbore Depth	Counterbore Diameter	Counterbore Diameter			
R1	.031	0.8	.000	0.00	.000	0.00	4
R2	.047	1.2	.000	0.00	.000	0.00	4
R3	.062	1.6	.020	0.51	.199	5.05	3
R4	.093	2.4	.051	1.30	.199	5.05	2
R5	.104	2.6	.061	1.55	.199	5.05	1
R6	.125	3.2	.082	2.08	.199	5.05	1
R7	.156	4.0	.097	2.46	.199	5.05	2
R8	.135	3.4	.098	2.49	.199	5.05	2
R9	.188	4.8	.146	3.71	.219	5.56	2

