

# D-Subminiature

## 550-039

### Shrouded Backshell, EMI Banding

- Split EMI Backshell
- Banding Shield Termination
- .24" (6.1mm) Band

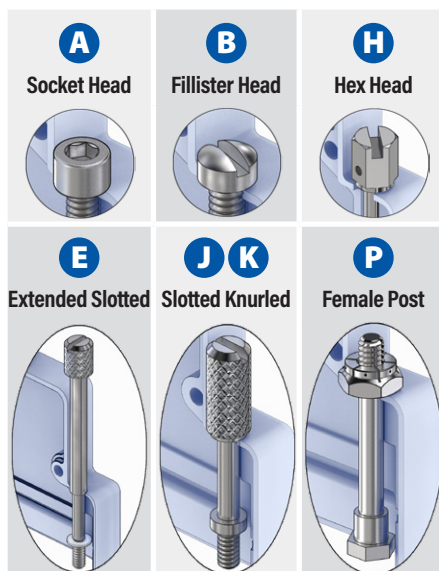


#### 550-039

This accessory fits D-Subminiature M24308 connectors.  
Not compatible with Series 28 HiPer-D

**Band platform, shrouded.** 550-039 diecast aluminum backshell fits M24308 D-Subminiature connectors. EMI protected. Cable shield attaches to backshell with optional band strap. Install optional metalastic EMI gasket on mating connector panel. Connector is captivated between backshell halves. Eleven shroud lengths to accommodate mating connector mounting dimensions. #4-40 screwlocks are included. Aluminum with stainless steel screws and washers.

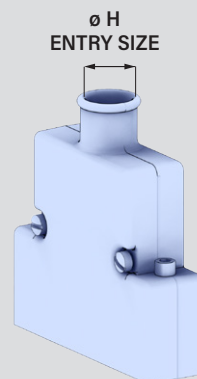
**TABLE 1**  
SCREWLOCK OPTIONS



#### PART NUMBER

Sample PN → **550T039 M 3 R3 A 0 -03 B**

|   |  |
|---|--|
| <b>Base P/N</b>                           | <b>550T039</b> <b>T</b> Top Entry                      |
|   | <b>550E039</b> <b>E</b> End Entry                      |
|   | <b>550S039</b> <b>S</b> Side Entry                     |
| <b>Finish</b>                             | <b>TZ</b> Tin-Zinc                                     |
|   | <b>MN</b> MegaNickel                                   |
|   | <b>JF</b> Cadmium, Yel. Chromate                       |
|   | <b>M</b> Electroless Nickel                            |
|   | <b>NF</b> Olive Drab Cadmium                           |
|   | <b>MT</b> Nickel-PTFE                                  |
|   | <b>ZR</b> Black Zinc-Nickel                            |
| <b>Shell Size</b>                         | <b>1 2 3 4 5 6</b>                                     |
| <b>Shroud Length</b>                      | <b>Mating Connector Rear Panel Mounting</b>            |
|   | <b>Code Panel Thickness E</b>                          |
|   | <b>R1</b> .031 (0.8) .247 (6.3)                        |
|   | <b>R2</b> .047 (1.2) .231 (5.9)                        |
|   | <b>R3</b> .062 (1.6) .216 (5.5)                        |
|   | <b>R4</b> .093 (2.4) .185 (4.7)                        |
|   | <b>R5</b> .104 (2.6) .174 (4.4)                        |
|   | <b>R6</b> .125 (3.2) .153 (3.9)                        |
|   | <b>R7</b> .156 (4.0) .125 (3.2)                        |
|   | <b>R8</b> .135 (3.4) .140 (3.6)                        |
|   | <b>R9</b> .188 (4.8) .094 (2.4)                        |
| <b>CC</b> Cable-to-Cable .185 (4.7)       |  |
| <b>F0</b> Front Panel Mount .343 (8.7)    |  |
| <b>Screwlocks</b><br>(Table 1)            | <b>Code Type Profiles</b>                              |
|   | <b>A</b> Male, Socket Head <b>ST</b>                   |
|   | <b>B</b> Male, Fillister Head <b>ST</b>                |
|   | <b>E</b> Male, Extended Slotted <b>ST</b>              |
|   | <b>H</b> Male, Hex Head, Drilled <b>ST</b>             |
|   | <b>J</b> Male, Slotted, Knurled <b>E</b>               |
|   | <b>K</b> Male, Slotted, Knurled <b>ST</b>              |
| <b>P</b> Female Hex Post, Fixed <b>ST</b> |  |
| <b>EMI Panel Gasket</b>                   | <b>0</b> No Gasket                                     |
|   | <b>1</b> Gasket Included (install on mating connector) |
| <b>Entry Size</b>                         | <b>Entry Size H Shell Size</b>                         |
|   | <b>Entry Dia. S T E</b>                                |
|   | <b>-01</b> .125 (3.2) 1-6 1-6 1-6                      |
|   | <b>-02</b> .250 (6.4) 1-6 1-6 1-6                      |
|   | <b>-03</b> .312 (7.9) 1-6 1-6 1-6                      |
|   | <b>-04</b> .395 (10.0) 1-6 1-6 1-6                     |
|   | <b>-05</b> .438 (11.1) 1-6 1-6 1-6                     |
|   | <b>-06</b> .500 (12.7) 4-6 4-6 4-6                     |
|   | <b>-07</b> .562 (14.3) 4-6 4-6 4-6                     |
|   | <b>-08</b> .624 (15.8) 4-6 4-6 6                       |
|   | <b>-09</b> .688 (17.5) 6 6 6                           |
|   | <b>-10</b> .750 (19.1) 6 6 6                           |
|   | <b>-11</b> .812 (20.6) 6 6 6                           |
|   | <b>-12</b> .875 (22.2) 6 6 6                           |
|   | <b>-13</b> .937 (23.8) 6 6 6                           |
| <b>-14</b> 1.000 (25.4) 6 6 6             |  |
| <b>Band</b>                               | <b>Omit</b> No Band                                    |
|   | <b>B</b> Standard Band Included                        |
|   | <b>J</b> Slim Standard Band Included                   |

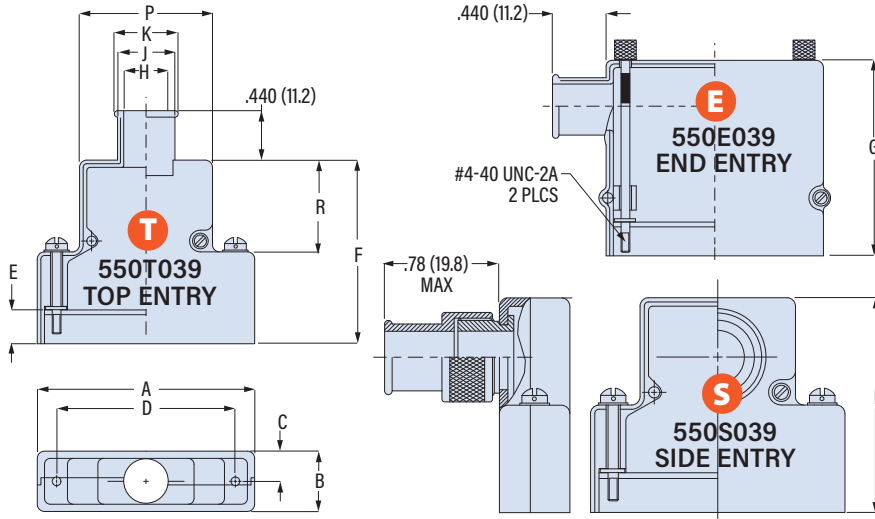


# D-Subminiature

## 550-039

### Shrouded Backshell, EMI Banding

- Split EMI Backshell
- Banding Shield Termination
- .24" (6.1mm) Band



| Shell Size | A Max |      | B Max |      | C    | D    |       | P    | R     |      | Max Entry Size |      |     |
|------------|-------|------|-------|------|------|------|-------|------|-------|------|----------------|------|-----|
|            | in    | mm   | in    | mm   |      | in   | mm    |      | in    | mm   |                |      |     |
| 1          | 1.393 | 35.4 | .624  | 15.8 | .312 | 7.9  | .984  | 25.0 | .730  | 18.5 | .719           | 18.3 | 05  |
| 2          | 1.706 | 43.3 | .624  | 15.8 | .312 | 7.9  | 1.312 | 33.3 | 1.050 | 26.7 | .719           | 18.3 | 05  |
| 3          | 2.265 | 57.5 | .624  | 15.8 | .312 | 7.9  | 1.852 | 47.0 | 1.594 | 40.5 | .938           | 23.8 | 05  |
| 4          | 2.900 | 73.7 | .624  | 15.8 | .312 | 7.9  | 2.500 | 63.5 | 2.240 | 56.9 | .938           | 23.8 | 08▲ |
| 5          | 2.800 | 71.1 | .750  | 19.1 | .375 | 9.5  | 2.406 | 61.1 | 2.140 | 54.4 | .938           | 23.8 | 08  |
| 6          | 2.900 | 73.7 | .844  | 21.4 | .422 | 10.7 | 2.500 | 63.5 | 2.240 | 56.9 | 1.094          | 27.8 | 14  |

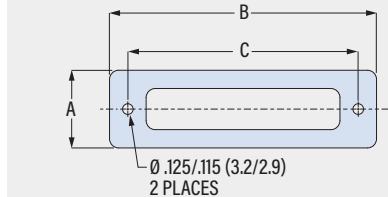
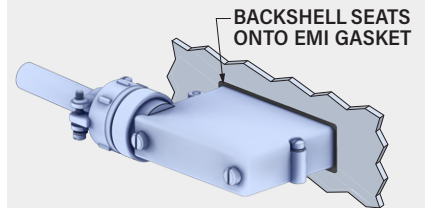
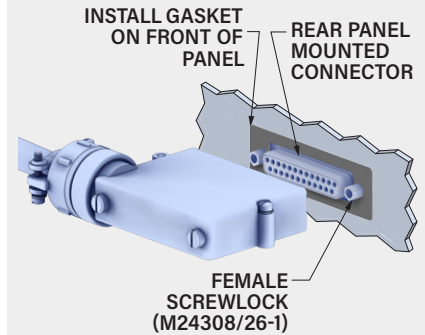
▲ 07 is Max Entry Size for End Entry Shell Size 4.

| Shroud Length | Mating Connector Panel Thickness |     | E Shroud Length |     | F         |      |              |      |        |      | G         |      |          |      |
|---------------|----------------------------------|-----|-----------------|-----|-----------|------|--------------|------|--------|------|-----------|------|----------|------|
|               | in                               | mm  | in              | mm  | Size 1, 2 |      | Size 3, 4, 5 |      | Size 6 |      | Size 1, 2 |      | Size 3-6 |      |
| CC            | N/A                              | N/A | .185            | 4.7 | 1.467     | 37.3 | 1.686        | 42.8 | 1.842  | 46.8 | 1.592     | 40.4 | 1.842    | 46.8 |
| F0            | N/A                              | N/A | .343            | 8.7 | 1.625     | 41.3 | 1.844        | 46.8 | 2.000  | 50.8 | 1.750     | 44.5 | 2.000    | 50.8 |
| R1            | .031                             | 0.8 | .247            | 6.3 | 1.529     | 38.8 | 1.748        | 44.4 | 1.904  | 48.4 | 1.654     | 42.0 | 1.904    | 48.4 |
| R2            | .047                             | 1.2 | .231            | 5.9 | 1.513     | 38.4 | 1.732        | 44.0 | 1.888  | 48.0 | 1.638     | 41.6 | 1.888    | 48.0 |
| R3            | .062                             | 1.6 | .216            | 5.5 | 1.498     | 38.0 | 1.717        | 43.6 | 1.873  | 47.6 | 1.623     | 41.2 | 1.873    | 47.6 |
| R4            | .093                             | 2.4 | .185            | 4.7 | 1.467     | 37.3 | 1.686        | 42.8 | 1.842  | 46.8 | 1.592     | 40.4 | 1.842    | 46.8 |
| R5            | .104                             | 2.6 | .174            | 4.4 | 1.456     | 37.0 | 1.675        | 42.5 | 1.831  | 46.5 | 1.581     | 40.2 | 1.831    | 46.5 |
| R6            | .125                             | 3.2 | .153            | 3.9 | 1.435     | 36.4 | 1.654        | 42.0 | 1.810  | 46.0 | 1.560     | 39.6 | 1.810    | 46.0 |
| R7            | .156                             | 4.0 | .125            | 3.2 | 1.407     | 35.7 | 1.626        | 41.3 | 1.782  | 45.3 | 1.532     | 38.9 | 1.782    | 45.3 |
| R8            | .135                             | 3.4 | .140            | 3.6 | 1.422     | 36.1 | 1.641        | 41.7 | 1.797  | 45.7 | 1.547     | 39.3 | 1.797    | 45.7 |
| R9            | .188                             | 4.8 | .094            | 2.4 | 1.376     | 34.9 | 1.595        | 40.5 | 1.751  | 44.5 | 1.501     | 38.1 | 1.751    | 44.5 |

| Entry Size | ø H   |      | ø J   |      | ø K   |      |
|------------|-------|------|-------|------|-------|------|
|            | in    | mm   | in    | mm   | in    | mm   |
| 01         | .125  | 3.2  | .250  | 6.4  | .312  | 7.9  |
| 02         | .250  | 6.4  | .375  | 9.5  | .438  | 11.1 |
| 03         | .312  | 7.9  | .438  | 11.1 | .500  | 12.7 |
| 04         | .395  | 10.0 | .500  | 12.7 | .562  | 14.3 |
| 05         | .438  | 11.1 | .562  | 14.3 | .625  | 15.9 |
| 06         | .500  | 12.7 | .625  | 15.9 | .688  | 17.5 |
| 07         | .562  | 14.3 | .688  | 17.5 | .750  | 19.1 |
| 08         | .624  | 15.8 | .750  | 19.1 | .812  | 20.6 |
| 09         | .688  | 17.5 | .812  | 20.6 | .875  | 22.2 |
| 10         | .750  | 19.1 | .875  | 22.2 | .937  | 23.8 |
| 11         | .812  | 20.6 | .937  | 23.8 | 1.000 | 25.4 |
| 12         | .875  | 22.2 | 1.000 | 25.4 | 1.125 | 28.6 |
| 13         | .937  | 23.8 | 1.062 | 27.0 | 1.187 | 30.1 |
| 14         | 1.000 | 25.4 | 1.125 | 28.6 | 1.250 | 31.8 |

### EMI PANEL GASKET

Install gasket on front side of mating connector panel. Gasket is die cut from .020" thick metalastic (aluminum mesh and silicone) material. When backshell is fastened to panel connector, the front edge of the shroud seats onto gasket for aperture-free EMI protection.



| Shell Size | Gasket Part No. | A    | B     | C     |
|------------|-----------------|------|-------|-------|
| 1          | 559-002-1       | .740 | 1.500 | .980  |
| 2          | 559-002-2       | .740 | 1.810 | 1.310 |
| 3          | 559-002-3       | .740 | 2.380 | 1.850 |
| 4          | 559-002-4       | .740 | 3.010 | 2.500 |
| 5          | 559-002-5       | .850 | 2.920 | 2.410 |
| 6          | 559-002-6       | .925 | 3.010 | 2.500 |

### BAND OPTIONS

Terminate cable braid to backshell with optional band strap and banding tool. Pre-coiled bands are passivated stainless steel. Slim Standard bands have reduced thickness for weight reduction.



| Band Type and Width      | Hand Tool | Pneumatic Tool |
|--------------------------|-----------|----------------|
| Standard: .24 (6.1)      | 601-100   | 601-106        |
| Slim Standard: .24 (6.1) | 601-109   | 601-110        |