

D-Subminiature

557-246

Elliptical Micro Band Backshell

- Solid EMI Backshell, .25" Flange
- Micro Band Shield Termination
- Qwik-Ty Strain Relief



557-246

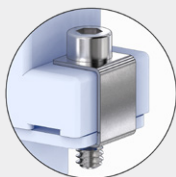
This accessory fits D-Subminiature M24308 connectors.
Not compatible with Series 28 HiPer-D

One piece, elliptical Micro band, .25 (6.4) flange. 557-246 aluminum backshell fits M24308 D-Subminiature connectors. Terminate cable braid to backshell with .12 wide (3.0) Micro band. Optional slot for routing individual pigtail shields. Optional Qwik-Ty strain relief arm. Aluminum with stainless steel screws and clips.

TABLE 1
SCREWLOCK OPTIONS

No Designator

4-40 Socket Head Male Screwlocks With Clips



P

4-40 Female Screwlocks (fixed, non-rotating)



E

4-40 Extended Length Slotted Male Screwlocks With Clips



PART NUMBER

Sample PN → **557T246 M 3 08 S T K**

Base P/N	557T246 Top Entry																																											
Finish	TZ Tin-Zinc MN MegaNickel JF Cadmium, Yel. Chromate M Electroless Nickel NF Olive Drab Cadmium MT Nickel-PTFE ZR Black Zinc-Nickel																																											
Shell Size	1 2 3 4 5 6																																											
Screwlocks (Table 1)	Omit Socket Head Screwlocks E Extended Slotted Male Screwlock P Female Screwlocks (fixed)																																											
Entry Size	<table border="1"> <thead> <tr> <th>Entry Size</th> <th>F</th> <th>Shell Size</th> </tr> </thead> <tbody> <tr><td>04</td><td>.500 (12.7)</td><td>1-6</td></tr> <tr><td>05</td><td>.625 (15.9)</td><td>1-6</td></tr> <tr><td>06</td><td>.750 (19.1)</td><td>2-6</td></tr> <tr><td>07</td><td>.875 (22.2)</td><td>2-6</td></tr> <tr><td>08</td><td>1.000 (25.4)</td><td>2-6</td></tr> <tr><td>09</td><td>1.125 (28.6)</td><td>3-6</td></tr> <tr><td>10</td><td>1.250 (31.8)</td><td>3-6</td></tr> <tr><td>11</td><td>1.375 (34.9)</td><td>3-6</td></tr> <tr><td>12</td><td>1.500 (38.1)</td><td>3-6</td></tr> <tr><td>13</td><td>1.625 (41.3)</td><td>4-6</td></tr> <tr><td>14</td><td>1.750 (44.5)</td><td>4-6</td></tr> <tr><td>15</td><td>1.875 (47.6)</td><td>4-6</td></tr> <tr><td>16</td><td>2.000 (50.8)</td><td>4-6</td></tr> </tbody> </table>	Entry Size	F	Shell Size	04	.500 (12.7)	1-6	05	.625 (15.9)	1-6	06	.750 (19.1)	2-6	07	.875 (22.2)	2-6	08	1.000 (25.4)	2-6	09	1.125 (28.6)	3-6	10	1.250 (31.8)	3-6	11	1.375 (34.9)	3-6	12	1.500 (38.1)	3-6	13	1.625 (41.3)	4-6	14	1.750 (44.5)	4-6	15	1.875 (47.6)	4-6	16	2.000 (50.8)	4-6	
Entry Size	F	Shell Size																																										
04	.500 (12.7)	1-6																																										
05	.625 (15.9)	1-6																																										
06	.750 (19.1)	2-6																																										
07	.875 (22.2)	2-6																																										
08	1.000 (25.4)	2-6																																										
09	1.125 (28.6)	3-6																																										
10	1.250 (31.8)	3-6																																										
11	1.375 (34.9)	3-6																																										
12	1.500 (38.1)	3-6																																										
13	1.625 (41.3)	4-6																																										
14	1.750 (44.5)	4-6																																										
15	1.875 (47.6)	4-6																																										
16	2.000 (50.8)	4-6																																										
Slot	Omit No Slot S Slot (in banding area)																																											
Qwik-Ty	Omit No Qwik-Ty Strain Relief Arm T Qwik-Ty Arm Included																																											
Band	Omit No Band K Micro Band Included J Micro Slim Band Included L Micro-Max Band Included																																											

D-SUBMINIATURE ACCESSORIES

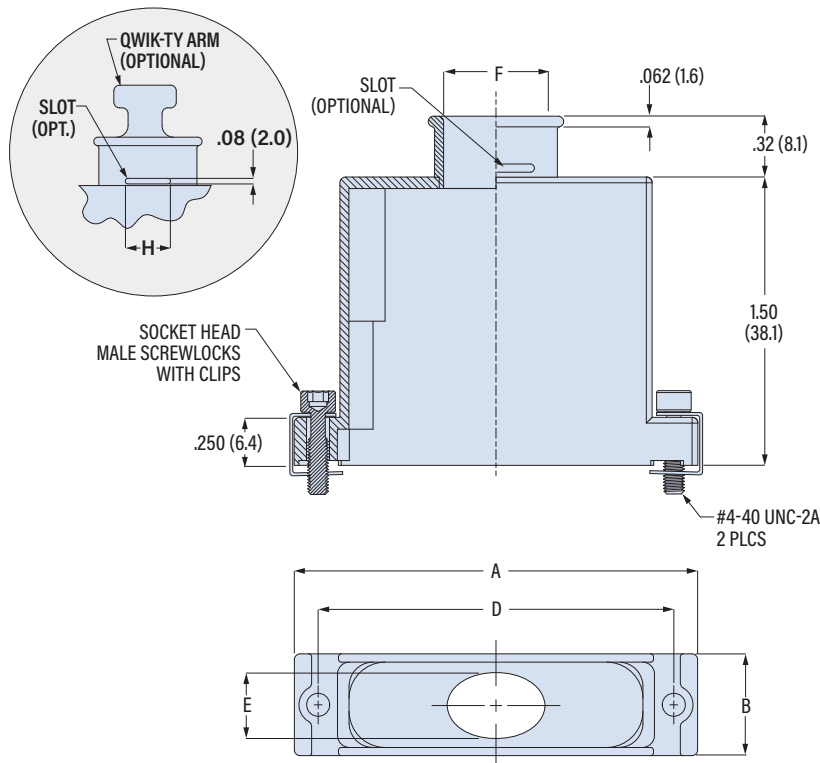
D-Subminiature



557-246

Elliptical Micro Band Backshell

- Solid EMI Backshell, .25" Flange
- Micro Band Shield Termination
- Qwik-Ty Strain Relief



Shell Size	A Max		B		D ± .005 (0.13)		E		Max Entry Size
	in	mm	in	mm	in	mm	in	mm	
1	1.25	31.8	.53	13.5	.984	25.0	.375	9.5	05
2	1.58	40.1	.53	13.5	1.312	33.3	.375	9.5	08
3	2.13	54.1	.53	13.5	1.852	47.0	.375	9.5	12
4	2.77	70.4	.53	13.5	2.500	63.5	.375	9.5	16
5	2.68	68.1	.66	16.8	2.406	61.1	.484	12.3	16
6	2.77	70.4	.73	18.5	2.500	63.5	.554	14.1	16

Entry Size	F		H		Shell Size
	in	mm	in	mm	
04	.500	12.7	.19	4.8	1-6
05	.625	15.9	.19	4.8	1-6
06	.750	19.1	.22	5.6	2-6
07	.875	22.2	.22	5.6	2-6
08	1.000	25.4	.22	5.6	2-6
09	1.125	28.6	.22	5.6	3-6
10	1.250	31.8	.22	5.6	3-6
11	1.375	34.9	.25	6.4	3-6
12	1.500	38.1	.25	6.4	3-6
13	1.625	41.3	.25	6.4	4-6
14	1.750	44.5	.25	6.4	4-6
15	1.875	47.6	.25	6.4	4-6
16	2.000	50.8	.25	6.4	4-6

BAND OPTIONS

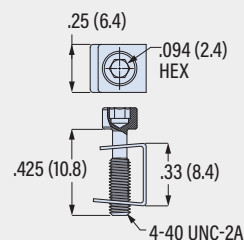
Terminate cable braid to backshell with optional band strap and banding tool. Pre-coiled bands are passivated stainless steel. Micro Slim bands have reduced thickness for weight reduction. Micro-Max bands are high-tension for lower-resistivity termination.

Band Type and Width	Hand Tool	Pneumatic Tool
Micro: .12 (3.0)	601-101	601-107
Micro Slim: .12 (3.0)	601-122	601-123
Micro-Max: .12 (3.0)	601-129	601-130

SCREWLOCK OPTIONS

No Designator

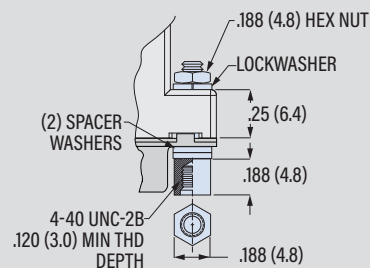
4-40 Socket Head Male Jackscrews with Clips



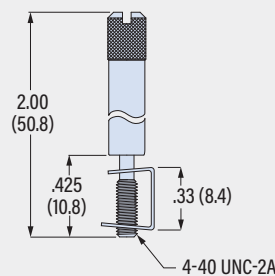
Part Number **687-236**
Order 2 per backshell



4-40 Female Screwlocks with Nut, Lockwasher and (2) Spacer Washers



4-40 Extended Length Slotted Male Screwlocks With Clips



D-SUBMINIATURE ACCESSORIES