

D-Subminiature

557-281

Banding Backshell, Micro Band

- Solid Backshell, .035" Flange
- Micro Band Shield Termination
- Lightweight Trapezoidal

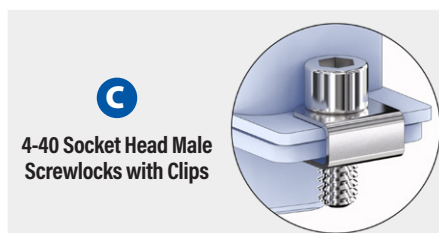


557-281

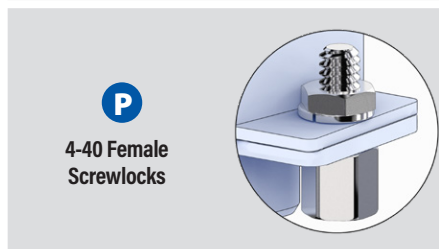
This accessory fits D-Subminiature M24308 connectors.
Not compatible with Series 28 HiPer-D

Lightweight, one piece, Micro band. 557-281 trapezoidal backshell fits M24308 D-Subminiature connectors. Terminate cable shield to backshell with .12" wide Micro band. 13 entry sizes from ½ inch to 2 inches. Available in 8 heights ranging from ½ inch to 1 ¾ inch. Backshell body is aluminum, screwlocks are stainless steel.

TABLE 1
SCREWLOCK OPTIONS



C
4-40 Socket Head Male
Screwlocks with Clips



P
4-40 Female
Screwlocks

PART NUMBER

Sample PN → **557-281 M 3 06 A S C J**

Base P/N **557-281**

Finish
TZ Tin-Zinc
MN MegaNickel
JF Cadmium, Yel. Chromate
M Electroless Nickel
NF Olive Drab Cadmium
MT Nickel-PTFE
ZR Black Zinc-Nickel

Shell Size **1 2 3 4 5 6**

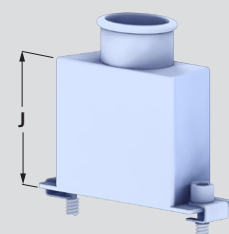
Entry Size	H	Shell Size
04	.500 (12.7)	1-6
05	.625 (15.9)	1-6
06	.750 (19.1)	2-6
07	.875 (22.2)	2-6
08	1.000 (25.4)	2-6
09	1.125 (28.6)	3-6
10	1.250 (31.8)	3-6
11	1.375 (34.9)	3-6
12	1.500 (38.1)	3-6
13	1.625 (41.3)	4-6
14	1.750 (44.5)	4-6
15	1.875 (47.6)	4-6
16	2.000 (50.8)	4-6



Entry Size

Code	J
A	.50 (12.7)
B	.62 (15.8)
C	.75 (19.1)
D	.87 (22.1)
E	1.00 (25.4)
F	1.12 (28.5)
G	1.25 (31.8)
H	1.38 (35.1)

Height Code



Qwik-Ty
Omit No Qwik-Ty Arm
T Qwik-Ty Arm Included



Screwlocks
(Table 1)
Omit Thru-Holes (screwlocks not included)
C Socket Head Male Screwlocks
P Female Screwlocks (fixed, non-rotating)

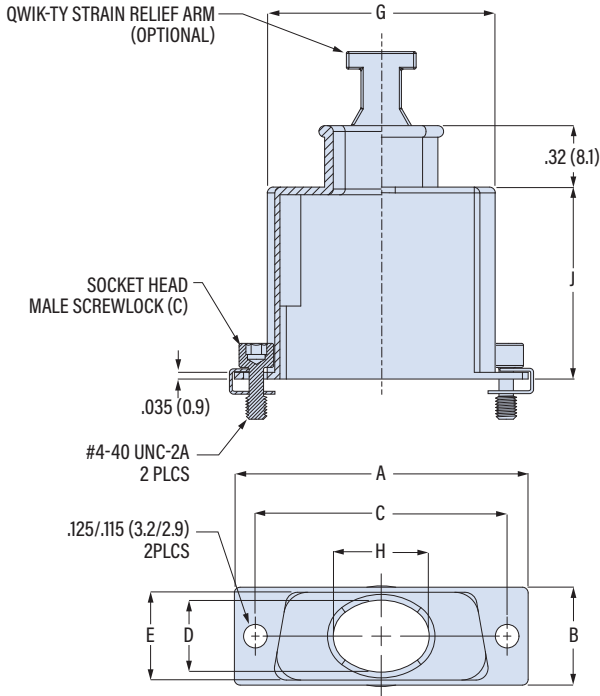
Band
Omit No Band
K Micro Band Included
J Micro Slim Band Included
L Micro-Max Band Included

D-Subminiature

557-281

Banding Backshell, Micro Band

- Solid Backshell, .035" Flange
- Micro Band Shield Termination
- Lightweight Trapezoidal



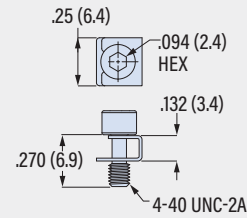
Shell Size	A		B		C ±.005 (0.13)		D		E		G ±.030 (0.8)		Max Entry Size
	in	mm	in	mm	in	mm	in	mm	in	mm	in	mm	
1	1.203	30.6	.500	12.7	.984	25.0	.375	9.5	.467	11.7	.839	21.3	05
2	1.531	38.9	.500	12.7	1.312	33.3	.375	9.5	.467	11.7	1.178	29.9	08
3	2.078	52.8	.500	12.7	1.852	47.0	.375	9.5	.467	11.7	1.706	43.3	12
4	2.718	69.0	.500	12.7	2.500	63.5	.375	9.5	.467	11.7	2.364	60.0	16
5	2.625	66.7	.609	15.5	2.406	61.1	.484	12.3	.579	14.7	2.291	58.2	16
6	2.780	70.6	.670	17.0	2.500	63.5	.554	14.1	.621	15.8	2.421	61.5	16

Entry Size	in	H	mm	Shell Size	Height Code	in	J	mm
04	.500	12.7	1-6	A	.50	12.7		
05	.625	15.9	1-6	B	.62	15.8		
06	.750	19.1	2-6	C	.75	19.1		
07	.875	22.2	2-6	D	.87	22.1		
08	1.000	25.4	2-6	E	1.00	25.4		
09	1.125	28.6	3-6	F	1.12	28.5		
10	1.250	31.8	3-6	G	1.25	31.8		
11	1.375	34.9	3-6	H	1.38	35.1		
12	1.500	38.1	3-6					
13	1.625	41.3	4-6					
14	1.750	44.5	4-6					
15	1.875	47.6	4-6					
16	2.000	50.8	4-6					

SCREWLOCK OPTIONS



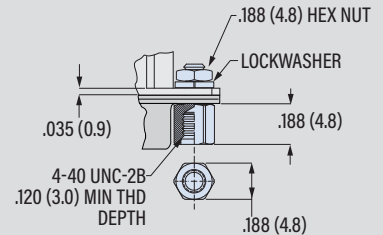
4-40 Socket Head Male Screwlocks with Clips



Part Number **687-316M**
Order 2 per backshell



4-40 Female Screwlocks (fixed, non-rotating)



Part Number **687-180P**
Order 2 per backshell

BAND OPTIONS

Terminate cable braid to backshell with optional band strap and banding tool. Pre-coiled bands are passivated stainless steel. Micro Slim bands have reduced thickness for weight reduction. Micro-Max bands are high-tension for lower-resistivity termination.



Band Type and Width	Hand Tool	Pneumatic Tool
Micro: .12 (3.0)	601-101	601-107
Micro Slim: .12 (3.0)	601-122	601-123
Micro-Max: .12 (3.0)	601-129	601-130

D-SUBMINIATURE ACCESSORIES