

# D-Subminiature



## 557-316

### Low Profile Banding Backshell

- Solid EMI Backshell, .25" Flange
- Banding Shield Termination
- Qwik-Ty® Strain Relief



**T** Top Entry



**S** Side Entry



**B** 45° Entry



**E** End Entry

#### 557-316

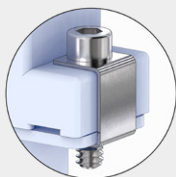
This accessory fits D-Subminiature M24308 connectors.  
Not compatible with Series 28 HiPer-D

One piece, reduced height, .25 (6.4) flange. 557-316 aluminum backshell fits M24308 D-Subminiature connectors. Top entry version has reduced can height for limited clearance equipment. Terminate cable braid to backshell with .24" (6.1) wide banding strap. Optional slot for routing individual pigtail shields. Optional Qwik-Ty strain relief arm. Aluminum with stainless steel screws and clips.

**TABLE 2**  
SCREWLOCK OPTIONS

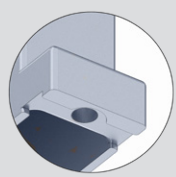
**A**

4-40 Socket Head Male Screwlocks with Clips





**H**

Thru-Holes (Screwlocks not included)



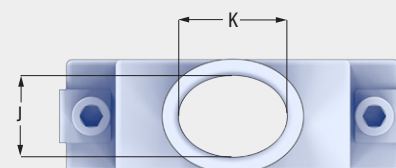
#### PART NUMBER

Sample PN → **557T316 M 3 32 S T K A**

Base P/N	<b>557B316</b> <b>B</b> 45° Entry <b>557E316</b> <b>E</b> End Entry <b>557S316</b> <b>S</b> Side Entry <b>557T316</b> <b>T</b> Top Entry
Finish	<b>TZ</b> Tin-Zinc <b>MN</b> MegaNickel <b>JF</b> Cadmium, Yel. Chromate <b>M</b> Electroless Nickel <b>NF</b> Olive Drab Cadmium <b>MT</b> Nickel-PTFE <b>ZR</b> Black Zinc-Nickel
Shell Size	<b>1 2 3 4 5 6</b>
Entry Size	See Table 1
Slot	<b>Omit</b> No Slot <b>S</b> Slot (in banding area) 
Qwik-Ty	<b>Omit</b> No Qwik-Ty Strain Relief Arm <b>T</b> Qwik-Ty Arm Included 
Band	<b>Omit</b> No Band <b>K</b> Standard Band Included <b>J</b> Slim Standard Band Included
Screwlocks (Table 1)	<b>Omit</b> #4-40 Tapped Holes <b>A</b> Socket Head Male Screwlocks <b>H</b> Thru-Holes (order screwlocks separately)

**TABLE 1 ENTRY SIZE**

Entry Size	<b>T B</b> Top and 45° Entry								<b>E S</b> End and Side Entry				
	Shell Sizes 1-4				Shell Sizes 5-6				Shell Sizes 1-6				
	ø J		K		Shell Size	J		K		J		K	
	in	mm	in	mm		in	mm	in	mm	in	mm	in	mm
<b>16</b>	.188	4.8	—	—	1-4	.188	4.8	—	—	.188	4.8	—	—
<b>23</b>	.250	6.4	—	—	1-4	.250	6.4	—	—	.250	6.4	—	—
<b>30</b>	.312	7.9	—	—	1-4	.312	7.9	—	—	.312	7.9	—	—
<b>31</b>	.375	9.5	—	—	1-4	.375	9.5	—	—	.375	9.5	—	—
<b>32</b>	.438	11.1	—	—	1-4	.438	11.1	—	—	.438	11.1	—	—
<b>33</b>	.562	14.3	.723	18.4	2-4	.562	14.3	—	—	.562	14.3	—	—
<b>34</b>	.650	16.5	.967	24.6	2-4	.460	11.7	1.380	35.1	.650	16.5	—	—
<b>35</b>	.562	14.3	1.250	31.8	3-4	.460	11.7	1.500	38.1	—	—	—	—
<b>36</b>	—	—	—	—	—	—	—	—	—	.650	16.5	.967	24.9



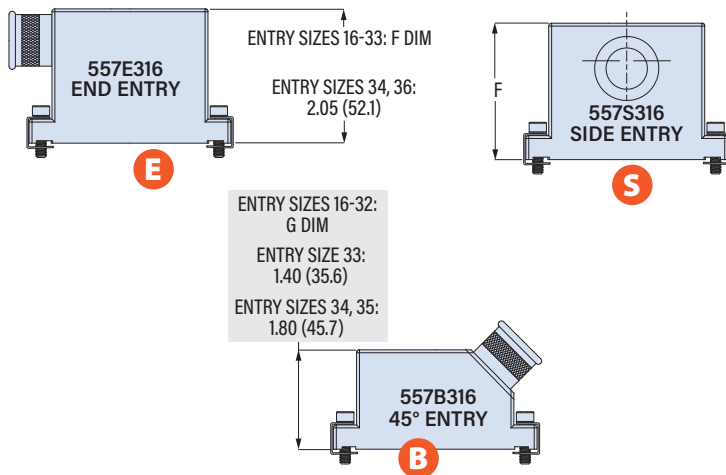
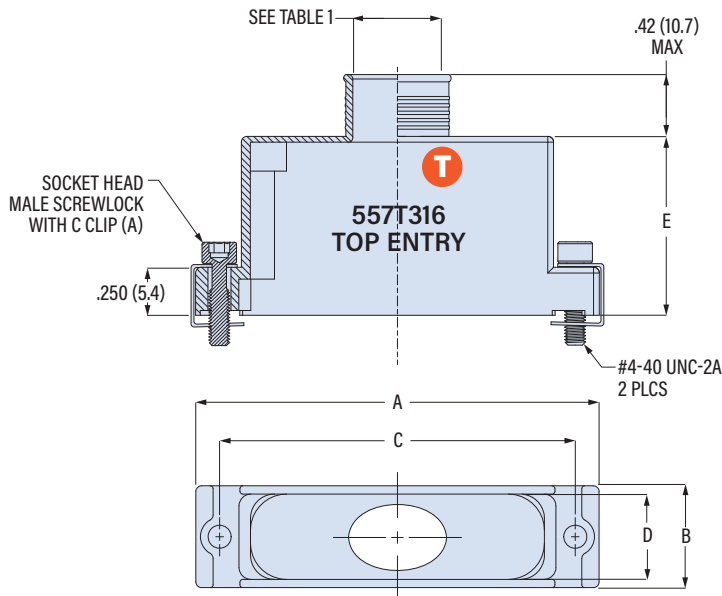
# D-Subminiature

## 557-316

### Low Profile Banding Backshell

- Solid EMI Backshell, .25" Flange
- Banding Shield Termination
- Qwik-Ty® Strain Relief

D-SUBMINIATURE ACCESSORIES



Shell Size	A Max		B ±.020 (0.51)		C ±.005 (0.13)		D		E Max		F Max		G Max		H	
	in	mm	in	mm	in	mm	in	mm	in	mm	in	mm	in	mm	in	mm
1	1.250	31.8	.520	13.2	.984	25.0	.440	11.2	.695	17.7	1.413	35.9	1.035	26.3	.856	21.7
2	1.580	40.1	.520	13.2	1.312	33.3	.440	11.2	.695	17.7	1.413	35.9	1.035	26.3	1.186	30.1
3	2.130	54.1	.520	13.2	1.852	47.0	.440	11.2	.945	24.0	1.413	35.9	1.035	26.3	1.727	43.9
4	2.770	70.4	.520	13.2	2.500	63.5	.440	11.2	.945	24.0	1.595	40.5	1.035	26.3	2.383	60.5
5	2.680	68.1	.629	16.0	2.406	61.1	.549	13.9	1.135	28.8	1.595	40.5	1.125	28.6	2.287	58.1
6	2.770	70.4	.690	17.5	2.500	63.5	.610	15.5	1.265	32.1	1.595	40.5	1.185	30.1	2.405	61.1

#### SCREWLOCKS

**A**

4-40 Socket Head Male Screwlocks with "C" Clips

Part Number **687-236**  
Order 2 per backshell

#### SLOT OPTION

Entry Size	in	L mm
16	.19	4.8
23	.22	5.6
30	.25	6.4
31	.28	7.1
32	.31	7.9
33	.38	9.7
34	.44	11.2
35	.45	11.4

#### QWIK-TY OPTION

QWIK-TY

#### BAND OPTIONS

Terminate cable braid to backshell with optional band strap and banding tool. Pre-coiled bands are passivated stainless steel. Slim Standard bands have reduced thickness for weight reduction.

Band Type and Width	Hand Tool	Pneumatic Tool
Standard: .24 (6.1)	<b>601-100</b>	<b>601-106</b>
Slim Standard: .24 (6.1)	<b>601-109</b>	<b>601-110</b>