

D-Subminiature

557-319

Banding Backshell, 45° & End Entry

- Solid Backshell, .035" Flange
- Banding Shield Termination
- Lightweight



B 45° Entry



E End Entry

557-319

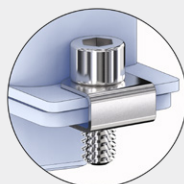
This accessory fits D-Subminiature M24308 connectors.
Not compatible with Series 28 HiPer-D

Lightweight, one piece. 557-319 backshell fits M24308 D-Subminiature connectors. Terminate cable shield to backshell with .24" wide band strap. Available in 45° or end entry. Attach cable tie to optional Qwik-Ty strain relief arm. Backshell body is aluminum, screwlocks are stainless steel.

TABLE 1 SCREWLOCK OPTIONS

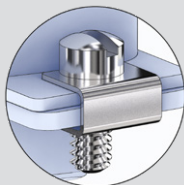
A

4-40 Socket Head Male Screwlocks with Clips



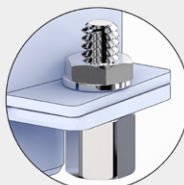
C

4-40 Fillister Hd. Male Screwlocks with Clips



P

4-40 Female Screwlocks



PART NUMBER

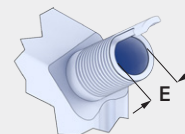
Sample PN → **557B319** **M** **2** **04** **C** **B** **-T**

Base P/N
557B319 **B** 45° Entry
557E319 **E** End Entry

Finish
TZ Tin-Zinc
MN MegaNickel
JF Cadmium, Yel. Chromate
M Electroless Nickel
NF Olive Drab Cadmium
MT Nickel-PTFE
ZR Black Zinc-Nickel

Shell Size **1 2 3 4 5 6**

Entry Size	Entry Size		Shell Size
		E	
01	.125 (3.2)		1-6
02	.187 (4.7)		1-6
03	.265 (6.7)		1-6
04	.312 (7.9)		1-6
05	.390 (9.9)		1-6
06	.415 (10.5)		1-6
07	.500 (12.7)		5-6
08	.525 (13.3)		5-6
09	.570 (14.5)		6



Screwlocks (Table 1)
Omit Thru-Holes (screwlocks not included)
A Socket Head Male Screwlocks
C Fillister Head Male Screwlocks
P Female Screwlocks (fixed, non-rotating)

Band
Omit No Band
B Standard Band Included
J Slim Standard Band Included

Qwik-Ty
Omit No Qwik-Ty Strain Relief Arm
-T Qwik-Ty Arm Included

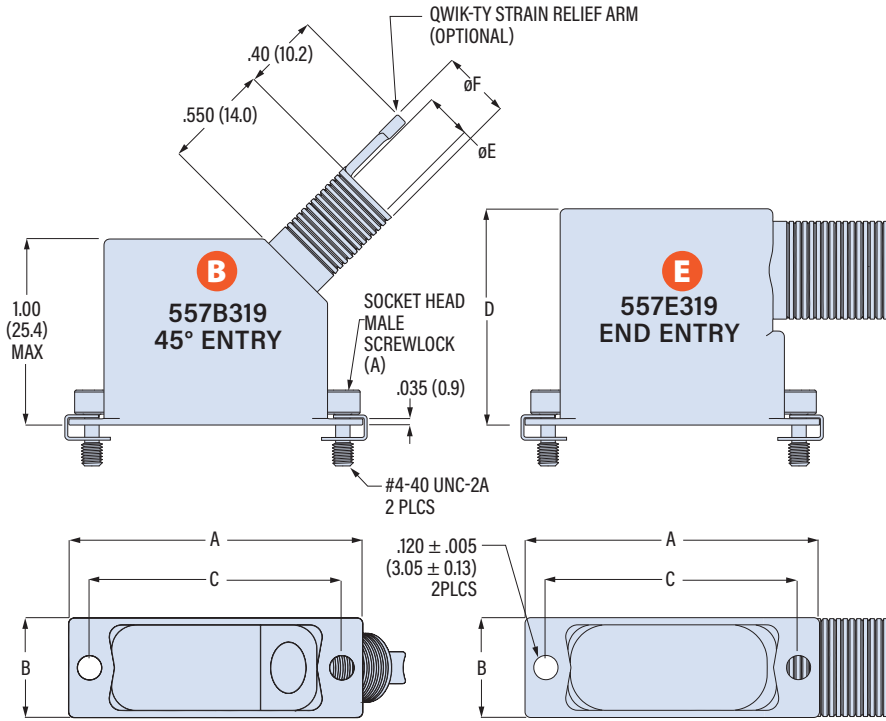


D-Subminiature

557-319

Banding Backshell, 45° & End Entry

- Solid Backshell, .035" Flange
- Banding Shield Termination
- Lightweight



Shell Size	A		B		C		D		Max Entry Size	Entry Size	ø E		ø F	
	in	mm	in	mm	±.005 (0.13)	mm	±.015 (0.38)	in			mm	in	mm	in
1	1.203	30.6	.520	13.2	.984	25.0	1.000	25.4	06	01	.125	3.2	.205	5.2
2	1.531	38.9	.520	13.2	1.312	33.3	1.125	28.6	06	02	.187	4.7	.267	6.8
3	2.078	52.8	.520	13.2	1.852	47.0	1.188	30.2	06	03	.265	6.7	.360	9.1
4	2.718	69.0	.520	13.2	2.500	63.5	1.188	30.2	06	04	.312	7.9	.392	10.0
5	2.625	66.7	.629	16.0	2.406	61.1	1.312	33.3	08	05	.390	9.9	.485	12.3
6	2.718	69.0	.690	17.5	2.500	63.5	1.312	33.3	09	06	.415	10.5	.510	13.0
										07	.500	12.7	.580	14.7
										08	.525	13.3	.620	15.7
										09	.570	14.5	.665	16.9

BAND OPTIONS

Terminate cable braid to backshell with optional band strap and banding tool. Pre-coiled bands are passivated stainless steel. Slim Standard bands have reduced thickness for weight reduction.

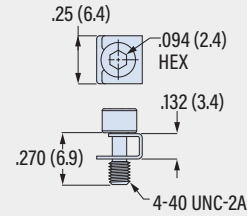


Band Type and Width	Hand Tool	Pneumatic Tool
Standard: .24 (6.1)	601-100	601-106
Slim Standard: .24 (6.1)	601-109	601-110

SCREWLOCK OPTIONS

A

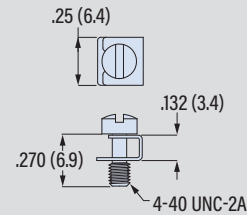
4-40 Socket Head Male Screwlocks with Clips



Part Number **687-316M**
Order 2 per backshell

C

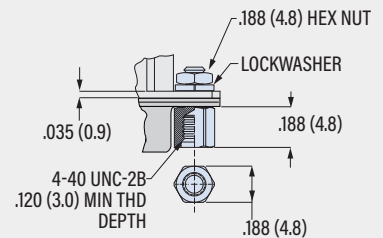
4-40 Fillister Head Male Screwlocks with Clips



Part Number **687-316**
Order 2 per backshell

P

4-40 Female Screwlocks (fixed, non-rotating)



Part Number **687-180P**
Order 2 per backshell

D-SUBMINIATURE ACCESSORIES