

D-Subminiature

557-561

Banding Backshell, Micro Band, 45° & End Entry

- Solid Backshell, .035" Flange
- Micro Band Shield Termination
- Lightweight



B 45° Entry



E End Entry

557-561

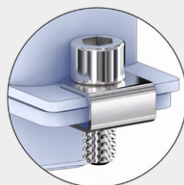
This accessory fits D-Subminiature M24308 connectors.
Not compatible with Series 28 HiPer-D

Lightweight, one piece, Micro band. 557-561 backshell fits M24308 D-Subminiature connectors. Terminate cable shield to backshell with .12" wide Micro band strap. Available in 45° or end entry. Backshell body is aluminum, screwlocks are stainless steel.

TABLE 1
SCREWLOCK OPTIONS

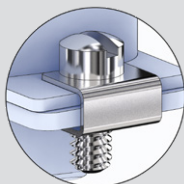
A

4-40 Socket Head Male Screwlocks with Clips



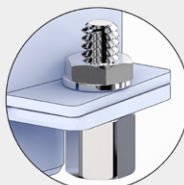
C

4-40 Fillister Hd. Male Screwlocks with Clips



P

4-40 Female Screwlocks



PART NUMBER

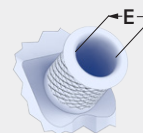
Sample PN → **557B561 M 2 04 C B**

Base P/N **557B561** **B** 45° Entry
557E561 **E** End Entry

Finish
TZ Tin-Zinc
MN MegaNickel
JF Cadmium, Yel. Chromate
M Electroless Nickel
NF Olive Drab Cadmium
MT Nickel-PTFE
ZR Black Zinc-Nickel

Shell Size **1 2 3 4 5 6**

| Entry Size | Shell Size | |
|------------|-------------|-----|
| | E | |
| 01 | .125 (3.2) | 1-6 |
| 02 | .187 (4.7) | 1-6 |
| 03 | .265 (6.7) | 1-6 |
| 04 | .312 (7.9) | 1-6 |
| 05 | .390 (9.9) | 1-6 |
| 06 | .415 (10.5) | 1-6 |
| 07 | .500 (12.7) | 5-6 |
| 08 | .525 (13.3) | 5-6 |
| 09 | .570 (14.5) | 6 |



Screwlocks (Table 1)
Omit Thru-Holes (screwlocks not included)
A Socket Head Male Screwlocks
C Fillister Head Male Screwlocks
P Female Screwlocks (fixed, non-rotating)

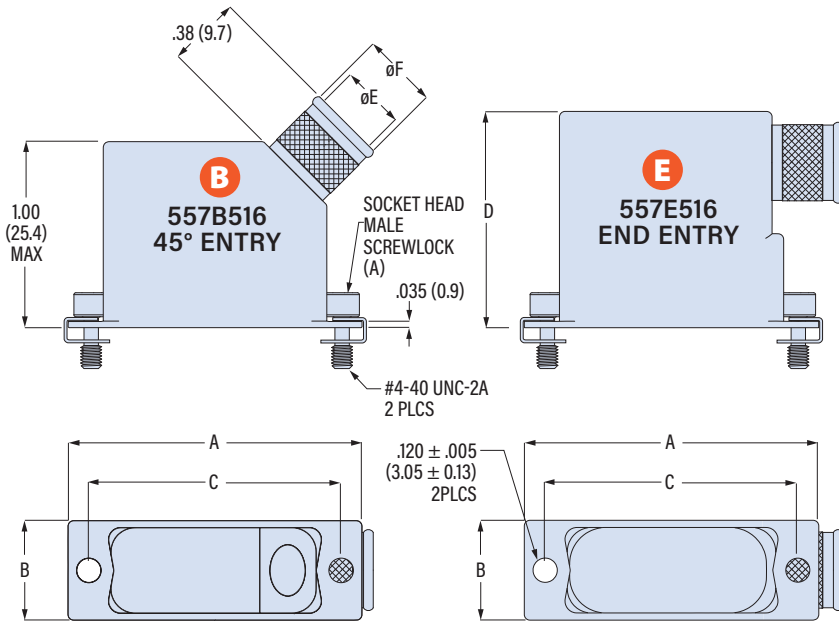
Band
Omit No Band
K Micro Band Included
J Micro Slim Band Included
L Micro-Max Band Included

D-Subminiature

557-561

Banding Backshell, Micro Band, 45° & End Entry

- Solid Backshell, .035" Flange
- Micro Band Shield Termination
- Lightweight



| Shell Size | A | | B | | C | | D | | Max Entry Size | Entry Size | ø E | | ø F | |
|------------|-------|------|------|------|-------|------|-------|------|----------------|------------|------|------|------|------|
| | in | mm | in | mm | in | mm | in | mm | | | in | mm | in | mm |
| 1 | 1.203 | 30.6 | .520 | 13.2 | .984 | 25.0 | 1.000 | 25.4 | 06 | 01 | .125 | 3.2 | .205 | 5.2 |
| 2 | 1.531 | 38.9 | .520 | 13.2 | 1.312 | 33.3 | 1.125 | 28.6 | 06 | 02 | .187 | 4.7 | .267 | 6.8 |
| 3 | 2.078 | 52.8 | .520 | 13.2 | 1.852 | 47.0 | 1.188 | 30.2 | 06 | 03 | .265 | 6.7 | .360 | 9.1 |
| 4 | 2.718 | 69.0 | .520 | 13.2 | 2.500 | 63.5 | 1.188 | 30.2 | 06 | 04 | .312 | 7.9 | .392 | 10.0 |
| 5 | 2.625 | 66.7 | .629 | 16.0 | 2.406 | 61.1 | 1.312 | 33.3 | 08 | 05 | .390 | 9.9 | .485 | 12.3 |
| 6 | 2.718 | 69.0 | .690 | 17.5 | 2.500 | 63.5 | 1.312 | 33.3 | 09 | 06 | .415 | 10.5 | .510 | 13.0 |
| | | | | | | | | | | 07 | .500 | 12.7 | .580 | 14.7 |
| | | | | | | | | | | 08 | .525 | 13.3 | .620 | 15.7 |
| | | | | | | | | | | 09 | .570 | 14.5 | .665 | 16.9 |

BAND OPTIONS

Terminate cable braid to backshell with optional band strap and banding tool. Pre-coiled bands are passivated stainless steel. Micro Slim bands have reduced thickness for weight reduction. Micro-Max bands are high-tension for lower-resistivity termination.

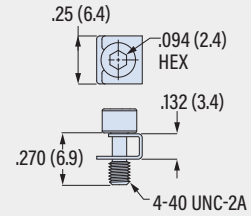


| Band Type and Width | Hand Tool | Pneumatic Tool |
|-----------------------|----------------|----------------|
| Micro: .12 (3.0) | 601-101 | 601-107 |
| Micro Slim: .12 (3.0) | 601-122 | 601-123 |
| Micro-Max: .12 (3.0) | 601-129 | 601-118 |

SCREWLOCK OPTIONS

A

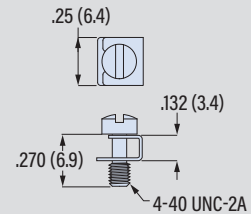
4-40 Socket Head Male Screwlocks with Clips



Part Number **687-316M**
Order 2 per backshell

C

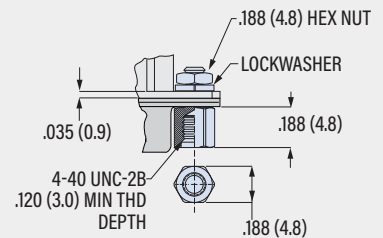
4-40 Fillister Head Male Screwlocks with Clips



Part Number **687-316**
Order 2 per backshell

P

4-40 Female Screwlocks (fixed, non-rotating)



Part Number **687-180P**
Order 2 per backshell

D-SUBMINIATURE ACCESSORIES