

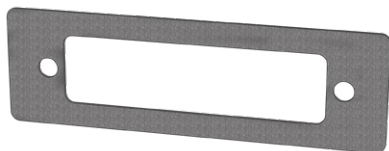
D-Subminiature

559-002

EMI Panel Gasket

D-SUBMINIATURE ACCESSORIES

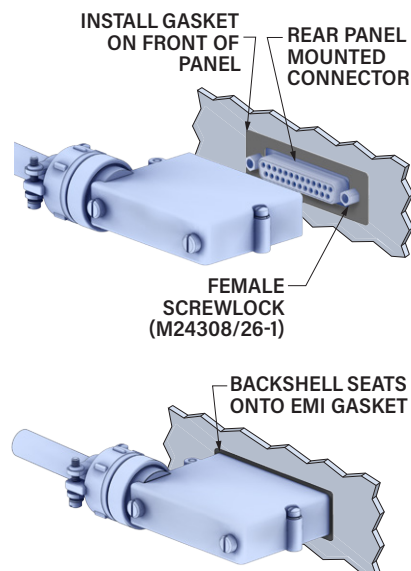
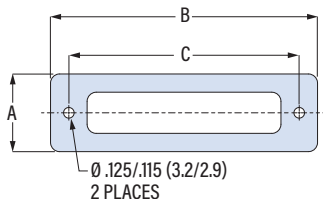
559-002 EMI PANEL GASKET FOR TYPE 1 SHROUDED BACKSHELLS



Gasket attaches to panel-mounted D-Subminiature connector. Use with shrouded Type 1 backshell. Backshell shroud seats onto gasket for EMI protection. Woven aluminum wire embedded in silicone.

■ For Series 550 Type 1 split backshells

		PART NUMBER					
Shell Size	Gasket Part No.	A	B	C			
		in	mm	in	mm	in	mm
1	559-002-01	.740	18.8	1.500	38.1	.980	24.9
2	559-002-02	.740	18.8	1.810	46.0	1.312	33.3
3	559-002-03	.740	18.8	2.380	60.5	1.852	47.0
4	559-002-04	.740	18.8	3.010	76.5	2.500	63.5
5	559-002-05	.850	21.6	2.920	74.2	2.406	61.1
6	559-002-06	.925	23.5	3.010	76.4	2.500	63.5



Install gasket onto panel with M24308/26 female screwlocks. When backshell is fastened to panel connector, the front edge of the shroud seats onto gasket for aperture-free EMI protection.