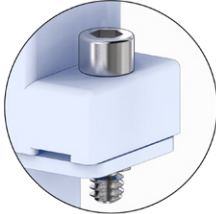


D-Subminiature

687-172, 687-236

Replacement Screwlocks for Type 2 Solid Backshells (.25" Flange)

687-172 SOCKET HEAD MALE JACKSCREW WITH "E" RING

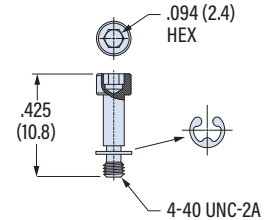


Replacement socket head male jackscrew for Type 2 solid Series 557 backshells with .25 (6.4) flange. Included "E" ring retains connector and screw to backshell. 300 Series stainless steel.

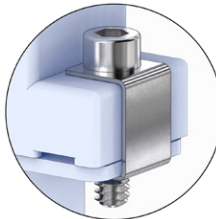
- Order (2) per backshell
- Fits Type 2 solid backshells with .25 (6.4) flange

PART NUMBER

687-172



687-236, 687-236S SOCKET HEAD MALE SCREWLOCK WITH CLIP



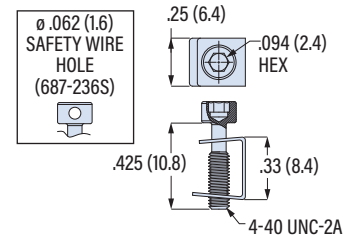
Replacement socket head male screwlock for Type 2 solid Series 557 backshells with .25 (6.4) flange. Available with safety wire hole. Includes clip. 300 Series stainless steel.

- Order (2) per backshell
- Fits Type 2 solid backshells with .25 (6.4) flange

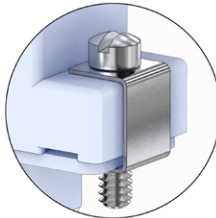
PART NUMBER

Socket Head **687-236**

Socket Head w/ Safety Wire Hole **687-236S**



687-236B SLOTTED FILLISTER HEAD MALE SCREWLOCK WITH CLIP

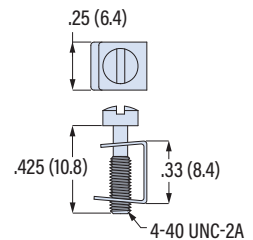


Replacement fillister head male screwlock for Type 2 solid Series 557 backshells with .25 (6.4) flange. Includes clip. 300 Series stainless steel.

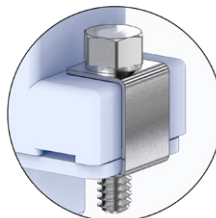
- Order (2) per backshell
- Fits Type 2 solid backshells with .25 (6.4) flange

PART NUMBER

687-236B



687-236H HEX HEAD MALE SCREWLOCK WITH CLIP



Replacement hex head male screwlock for Type 2 solid Series 557 backshells with .25 (6.4) flange. Includes clip. 300 Series stainless steel.

- Order (2) per backshell
- Fits Type 2 solid backshells with .25 (6.4) flange

PART NUMBER

687-236H

