

DPX / AS81659



507-011

Backshell, EMI Banding, AS81659



507-011

EMI banding backshell fits AS81659 connectors

Available with one or two ports. Terminate cable braid shield to backshell with **Band-Master ATS®** banding strap. Backshell includes RFI gasket and four #2-56 mounting screws and lockwashers.

Aluminum with stainless steel hardware and aluminum mesh/neoprene gasket.

TABLE 1 ENTRY SIZE

Entry Size	ø A Min		ø B		ø C Max	
	in	mm	in	mm	in	mm
01	.250	6.4	.375	9.5	.425	10.8
02	.375	9.5	.500	12.7	.550	14.0
03	.500	12.7	.625	15.9	.675	17.1
04 ⁽¹⁾	.625	15.9	.750	19.1	.800	20.3
05 ⁽¹⁾	.750	19.1	.875	22.2	.925	23.5

(1) Entry Sizes 04 and 05 not available for entry locations L and R

BAND OPTIONS

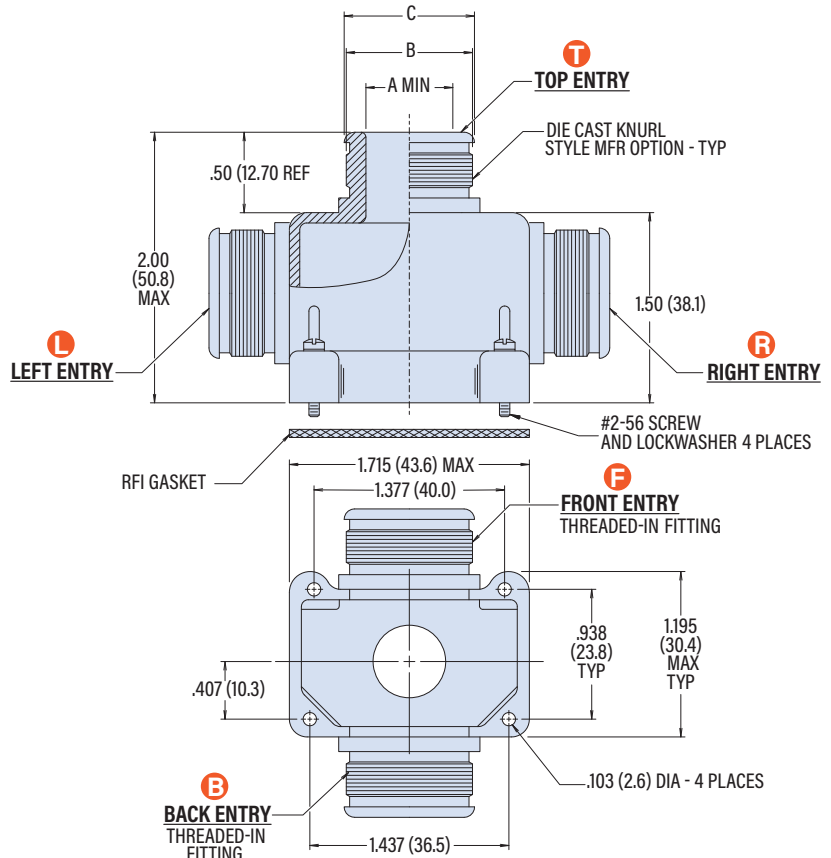
Terminate cable braid to backshell with optional band strap and banding tool. Pre-coiled bands are passivated stainless steel. Slim Standard bands have reduced thickness for weight reduction.



Band Type and Width	Hand Tool	Pneumatic Tool
Standard: .24 (6.1)	601-100	601-106
Slim Standard: .24 (6.1)	601-109	601-110

PART NUMBER

Sample PN →		507-011	M	04T	03B	J
Base P/N	507-011					
Finish	M	Electroless Nickel				
	TZ	Tin-Zinc				
	NF	Olive Drab Cadmium				
Port 1	Entry Size	01 02 03 04 05 See Table 1				
	Entry Location	B F L R T See Drawing				
Port 2	Entry Size	Omit Port 2 Deleted 01 02 03 04 05 See Table 1				
	Entry Location	Omit Port 2 Deleted B F L R T See Drawing				
Band	Omit	No Band				
	K	Standard Band Included (one per port)				
	J	Slim Standard Band Included (one per port)				



DPX / AS81659 BACKSHELLS