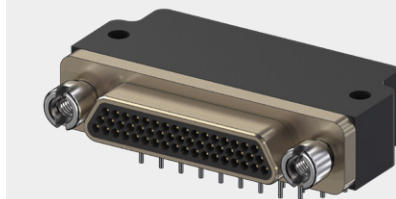


Micro-D

177-505

Jackpost Kit, Rear Panel Mount PCB

- For MWDM Types BS, BR and CBR
- Rear Panel Mount



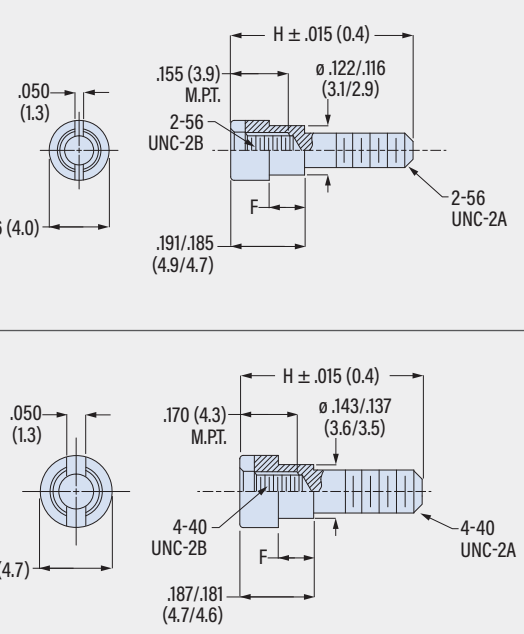
Rear panel mount jackpost kit fits MWDM printed circuit board connectors types BS, BR and CBR. Two thread sizes: 2-56 for size 9 to 69, 4-40 for sizes 75, 100 and 130. For panel thicknesses from 1/32 to 1/8 inch. Passivated 300 series stainless steel.

Install with threadlocking compound.

Kit consists of (2) female posts.

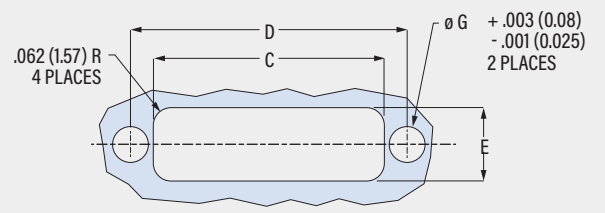
REAR PANEL MOUNT PCB JACKPOST KIT with (2) posts

A	Thread Size	Micro-D Size	Connector Type	Panel Thickness	Part No.	F		H			
				in mm		± .003 (0.08)	± .015 (0.4)				
						in mm	in mm				
2-56		9-69	BS, CBR	1/32 0.8	177-505-A-2-2	.024	0.61	.365	9.3		
				3/64 1.2	177-505-A-2-3	.041	1.04				
				1/16 1.6	177-505-A-2-4	.055	1.40				
				.080 2.0	177-505-A-2-7	.073	1.85				
				3/32 2.4	177-505-A-2-5	.086	2.18				
				1/8 3.2	177-505-A-2-6	.118	3.00				
				1/32 0.8	177-505-B-2-2	.024	0.61				
				3/64 1.2	177-505-B-2-3	.041	1.04				
				1/16 1.6	177-505-B-2-4	.055	1.40				
				.080 2.0	177-505-B-2-7	.073	1.85				
4-40		9-51	BR	3/32 2.4	177-505-B-2-5	.086	2.18	.398	10.1		
				1/8 3.2	177-505-B-2-6	.118	3.00				
				1/32 0.8	177-505-C-4-2	.024	0.61				
				3/64 1.2	177-505-C-4-3	.041	1.04				
				1/16 1.6	177-505-C-4-4	.055	1.40				
				.080 2.0	177-505-C-4-7	.073	1.85				
4-40		75-130	BR, CBR	3/32 2.4	177-505-C-4-5	.086	2.18	.475	12.1		
				1/8 3.2	177-505-C-4-6	.118	3.00				
				1/32 0.8	177-505-D-4-2	.024	0.61				
				3/64 1.2	177-505-D-4-3	.041	1.04				
				1/16 1.6	177-505-D-4-4	.055	1.40				
				.080 2.0	177-505-D-4-7	.073	1.85				
				3/32 2.4	177-505-D-4-5	.086	2.18			.360	9.1
				1/8 3.2	177-505-D-4-6	.118	3.00				
				1/16 1.6	177-505-D-4-4	.055	1.40				
				.080 2.0	177-505-D-4-7	.073	1.85				
3/32 2.4	177-505-D-4-5	.086	2.18								
1/8 3.2	177-505-D-4-6	.118	3.00								



RECOMMENDED PANEL CUTOUT FOR REAR PANEL MOUNT MICRO-D CONNECTORS

Shell Size	C	D	E	G
	± .005 (0.13)	± .005 (0.13)	± .005 (0.13)	
	in mm	in mm	in mm	in mm
09	.406 10.3	.565 14.4	.256 6.5	.125 3.2
15	.556 14.1	.715 18.2	.256 6.5	.125 3.2
21	.706 17.9	.865 22.0	.256 6.5	.125 3.2
25	.806 20.5	.965 24.5	.256 6.5	.125 3.2
31	.956 24.3	1.115 28.3	.256 6.5	.125 3.2
37	1.106 28.1	1.265 32.1	.256 6.5	.125 3.2
51	1.056 26.8	1.215 30.9	.300 7.6	.125 3.2
100	1.520 38.6	1.800 45.7	.406 10.3	.147 3.7



MICRO-D ACCESSORIES