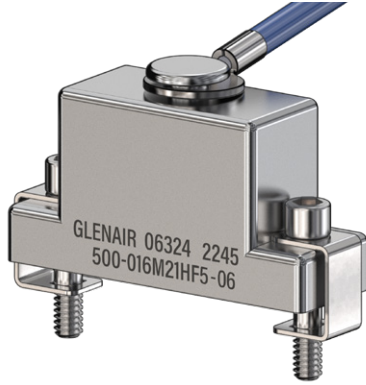


# Micro-D

## 500-016

### Shorting Cap Backshell



#### 500-016

This accessory fits MWDM and M83513 Class M metal shell Micro-D connectors.

500-016 shorting cap fits M83513 Class M and MWDM Micro-D connectors. Closed backshell is available with lanyard for panel or cable attachment. Aluminum with stainless steel screws and washers.

**TABLE 2**  
ATTACHMENT TYPE


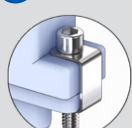

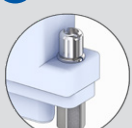
<b>F</b>		<b>Wire Rope, Nylon Jacket</b> 6/6 nylon over stainless steel rope, fair flexibility, good abrasion resistance, -55 to +100 °C
<b>G</b>		<b>Black Nylon Rope</b> Very flexible, good abrasion and fuel resistance, .062 (1.6) diameter, -55 to +100 °C
<b>H</b>		<b>Wire Rope, Clear FEP Jacket</b> Clear FEP jacket over SST rope, fair flexibility, good abrasion resistance, .100" diameter, -65 to +200 °C
<b>S</b>		<b>Wire Rope, Black Nylon Jacket</b> 6/6 nylon over stainless steel rope, .034 (0.9) diameter, good flexibility, good abrasion resistance, -55 to +100 °C
<b>T</b>		<b>SST Wire Rope, No Jacket</b> Good flexibility, good abrasion resistance, .047 (1.2) diameter, passivated, -65 to +200 °C

#### PART NUMBER

Sample PN → **500-016 Z2 51 H F 6 -06**

<b>Base P/N</b>	<b>500-016</b>
<b>Material / Finish</b>	<b>TZ</b> Tin-Zinc <b>JF</b> Alum / Cadmium w/ Yel. Chromate <b>M</b> Alum / Electroless Nickel <b>MT</b> Alum / Nickel-PTFE <b>ZR</b> Alum / Black Zinc-Nickel <b>Z2</b> Alum / Gold
<b>Shell Size</b>	<b>09 15 21 25 31 37 51 51-2</b> <b>67 69 100</b>
<b>Jackscrews (Table 1)</b>	<b>B</b> Fillister Head Male <b>E</b> Extended Male <b>F</b> Female Jackpost <b>H</b> Socket Head Male
<b>Attachment Type (Table 2)</b>	<b>N</b> No Attachment See Table 2 for attachment types
<b>Attachment Length</b>	Omit If No Attachment Length in One Inch Increments
<b>Attachment Fitting (Table 3)</b>	Omit If No Attachment <b>-00</b> No Fitting See Table 3 for attachment fittings

**TABLE 1 JACKSCREW OPTIONS**

<b>B</b> Fillister Head	<b>H</b> Socket Head	<b>E</b> Extended Slotted	<b>F</b> Female Post
			

**TABLE 3 ATTACHMENT FITTING**

<b>Ring</b>  <table border="1"> <thead> <tr> <th>Code</th> <th>Ring I.D.</th> </tr> </thead> <tbody> <tr> <td>-06</td> <td>.125 (3.2)</td> </tr> <tr> <td>-01</td> <td>.140 (3.6)</td> </tr> <tr> <td>-02</td> <td>.182 (4.6)</td> </tr> <tr> <td>-04</td> <td>.197 (5.0)</td> </tr> </tbody> </table>	Code	Ring I.D.	-06	.125 (3.2)	-01	.140 (3.6)	-02	.182 (4.6)	-04	.197 (5.0)	<b>Slip/Crimp Sleeve</b>  <b>-SCS</b> <b>Slip/Crimp Sleeve</b> For Attachment Type G Only Sleeve is copper with black chromate	<b>Crimp Ferrule</b>  <b>-CF</b> <b>Crimp Ferrule</b> For Attachment Types G or S Only Sleeve is copper with black chromate
Code	Ring I.D.											
-06	.125 (3.2)											
-01	.140 (3.6)											
-02	.182 (4.6)											
-04	.197 (5.0)											

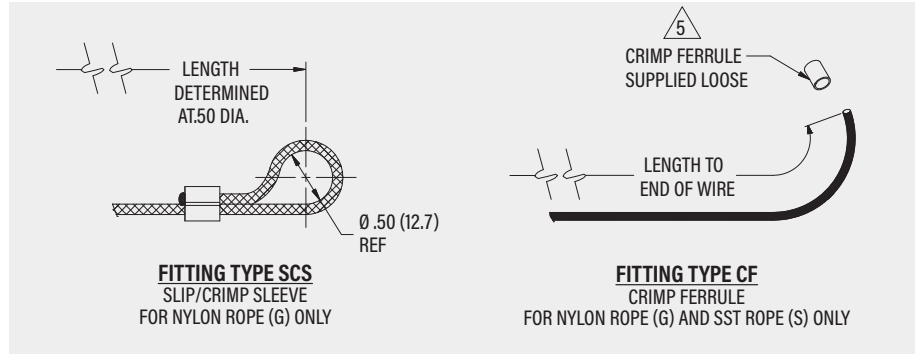
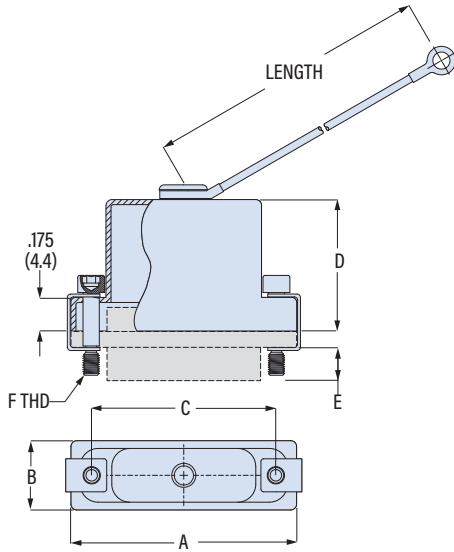
MICRO-D ACCESSORIES

# Micro-D

## 500-016

### Shorting Cap Backshell

MICRO-D ACCESSORIES



Size	A Max.		B Max		C		D Max		E Ref		F Thd
	in	mm	in	mm	in	mm	in	mm	in	mm	UNC-2
09	.850	21.6	.370	9.4	.565	14.4	.350	8.9	.154	3.9	2-56
15	1.000	25.4	.370	9.4	.715	18.2	.470	11.9	.154	3.9	2-56
21	1.150	29.2	.370	9.4	.865	22.0	.590	15.0	.154	3.9	2-56
25	1.250	31.8	.370	9.4	.965	24.5	.650	16.5	.154	3.9	2-56
31	1.400	35.6	.370	9.4	1.115	28.3	.710	18.0	.154	3.9	2-56
37	1.550	39.4	.370	9.4	1.265	32.1	.750	19.1	.154	3.9	2-56
51	1.500	38.1	.410	10.4	1.215	30.9	.780	19.8	.154	3.9	2-56
51-2	1.910	48.5	.370	9.4	1.615	41.0	.780	19.8	.154	3.9	2-56
67	2.310	58.7	.370	9.4	2.015	51.2	.780	19.8	.154	3.9	2-56
69	1.810	46.0	.410	10.4	1.515	38.5	.780	19.8	.154	3.9	2-56
100	2.235	56.8	.460	11.7	1.800	45.7	.840	21.3	.184	4.7	4-40