

# Micro-D

## Micro-D Accessories Selection Guide

MICRO-D ACCESSORIES

### Dust Caps & Covers



Protective Cover  
**500-017**  
Page B-5



Protective Cover,  
Low Profile  
**500-107**  
Page B-7



Protective Cover,  
Panel Mount  
**500-037**  
Page B-9

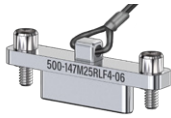


Anti-Static Dust Cap  
**000-00-XX-162/3**  
Page B-10



Rubber Cover  
**780-555**  
Page B-11

### MLDM Dust Caps & Covers



Protective Cover,  
MLDM  
**500-147** Page B-12



Anti-Static Dust Cap,  
MLDM  
Page B-10

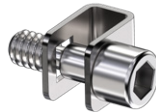
#### MLDM COVERS

These accessories fit **MLDM** Series Low Profile Micro-D connectors

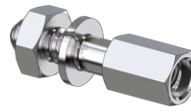
### Jackscrews & Screwlocks



Mil Spec  
Jackscrews  
Page B-14



Jackscrews and  
Screwlocks  
Page B-15



Jackpost Kits  
Page B-16

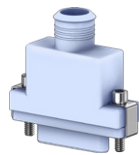


Rear Panel Mount  
Jackpost Kits  
Page B-17



Rear Panel Mount  
PCB Jackpost Kits  
Page B-18

### Backshell Hardware



Backshell Hardware  
Page B-19

### Gaskets and Seals



Interfacial Seals  
Page B-20



EMI Panel Gasket  
Page B-21

### Potting Shell



Potting Shell  
**507-035**  
Page B-22

### Shorting Cap



Shorting Cap  
**500-016**  
Page B-23

# Micro-D

## Micro-D Accessories Selection Guide

MICRO-D ACCESSORIES

### EMI Backshells

Round Entry  
Solid



EMI Banding  
**500-010**  
Page B-25



EMI Braid Sock  
**500-011**  
Page B-27



Composite EMI Banding  
**507-088**  
Page B-29



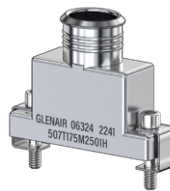
Dual Entry EMI Banding  
**507-142**  
Page B-31

### EMI Backshells

Elliptical Entry  
Solid



Elliptical EMI Banding  
**500-047**  
Page B-32



Elliptical EMI Micro Band  
**507-175**  
Page B-33

**⚠ CHECK WIRE BUNDLE SIZE**

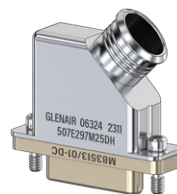
The ratio of wire bundle size to backshell entry should not exceed 80%. See 80% Entry Fill Table on next page for recommended sizes for round entry banding backshells when used with Micro-D pre-wired pigtails. In some cases the largest available entry size is too small to meet 80% maximum fill, and an elliptical entry backshell is recommended.

### Lightweight EMI Backshells

Elliptical Entry  
Solid



Elliptical EMI Banding  
**507-296**  
Page B-35



45° Elliptical EMI Banding  
**507-297**  
Page B-37

**MLDM BACKSHELL**

This accessory fits **MLDM** Series Low Profile Micro-D connectors

Elliptical EMI Banding, MLDM  
**507-299**  
Page B-46

### Split EMI Backshells

Round Entry  
Elliptical Entry



EMI Banding, Round Entry  
**507-145**  
Page B-39



EMI Banding, Elliptical Entry  
**507-178**  
Page B-40

### Strain Relief Backshells



Qwik-Ty  
**500-012**  
Page B-42



Straight Clamp  
**507-146**  
Page B-44



Deerp Straight Clamp  
**507-198**  
Page B-45