



527-268

EMI Backshell, EPXB2, Banding

- Top and End Entry
- Band-Master ATS Shield Termination
- Qwik-Ty Strain Relief



527-268

This split EMI banding backshell fits EPXB2 connectors

Backshell attaches to connector with M8 hex drive center mounting screw. Cable shields attach to backshell with .24 inch (6.1 mm) wide Band-Master ATS® banding strap. Aluminum with passivated stainless steel hardware.

TABLE 1 ENTRY SIZE

Entry Size	A in	A mm	B in	B mm	No. of Braid Slots
02	.250	6.4	.190	4.8	2
03	.312	7.9	.250	6.4	2
04	.375	9.5	.281	7.1	2
05	.438	11.1	.312	7.9	2

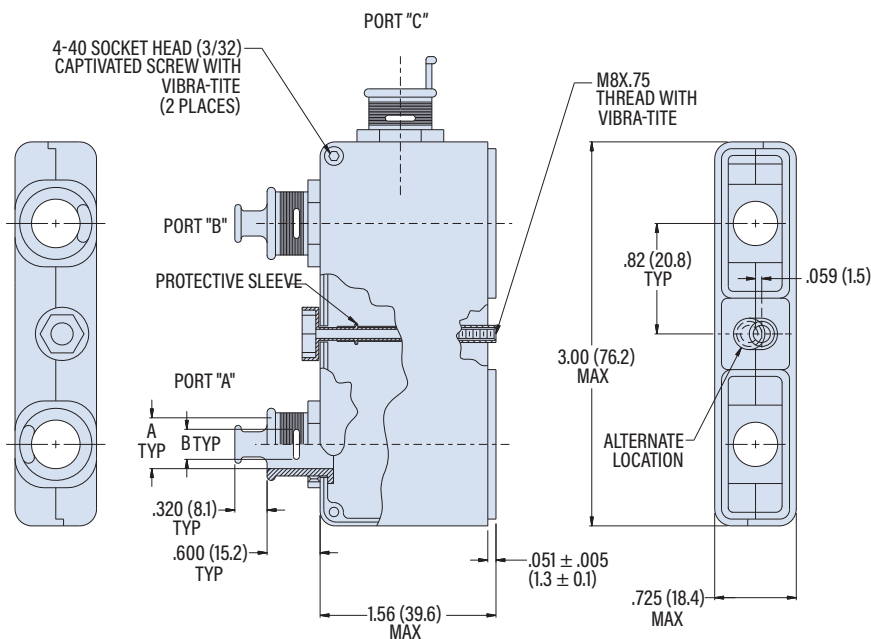
BAND OPTIONS

Terminate cable braid to backshell with optional band strap and banding tool. Pre-coiled bands are passivated stainless steel. Slim Standard bands have reduced thickness for weight reduction.



Band Type and Width	Hand Tool	Pneumatic Tool
Standard: .24 (6.1)	601-100	601-106
Slim Standard: .24 (6.1)	601-109	601-110

PART NUMBER	
Sample PN →	527-268 M A03 B02 C04 T B
Base P/N	527-268
Finish	M Electroless Nickel TZ Tin-Zinc NF Olive Drab Cadmium
Port A Entry Size	Omit Port A Deleted A02 A03 A04 A05 See Table 1
Port B Entry Size	Omit Port B Deleted B02 B03 B04 B05 See Table 1
Port C Entry Size	Omit Port C Deleted C02 C03 C04 C05 See Table 1
Qwik-Ty	Omit No Qwik-Ty T Qwik-Ty Strain Relief Arms Included
Bands	Omit No Band B Standard Band Included (one per port) J Slim Standard Band Included (one per port)



MODULAR RECTANGULAR BACKSHELLS