

EPXB TYPE
AVIATION
INDUSTRY MODULAR
CONNECTOR SERIES

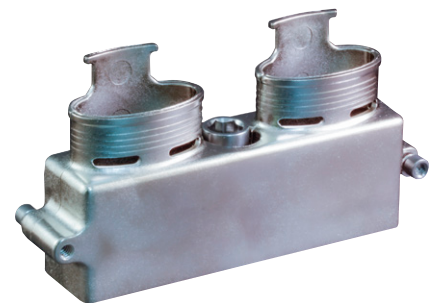


Modular EPXB, BACC65,
EN4165, and SIM EMI/RFI
and Strain Relief Backshells



EPXB type modular connectors are widely employed in aviation for their versatility and reliability. EPXB type connectors offer a modular construction, enabling easy customization and flexibility in configuring complex avionics systems. These connectors feature a ruggedized design, capable of withstanding harsh environmental conditions such as extreme temperatures, vibrations, and electromagnetic interference commonly encountered in aircraft operations. EPXB type connectors support high-speed data transmission, power distribution, and signal connections, making them integral components in avionic systems, communication equipment, and IFE systems.

Glenair Signature
Modular Rectangular Backshells



527-410

*This EMI banding backshell fits
BACC65AA/AB and EPXB2 connectors*

The 527-410 is a split-shell EMI banding backshell with a low-profile 1" (25.4) can height. Elliptical cable entries accommodate large wire bundles. Cable shields attach with Standard or Slim Standard Band-Master ATS® band straps.