

Modular Rectangular Backshell Selection Guide

MODULAR RECTANGULAR BACKSHELLS

**BACC65AA/AB
EPXB2
Backshells**



EMI Banding Backshell
2" (50.8) Can Height
BACC65AA/AB, EPXB2
527-260
Page E-2



EMI Banding Backshell
2" Can (50.8) Height
*BACC65AA/AB, EPXB2,
Radiall 617610100*
527-265
Page E-3



EMI Banding Backshell
1.5" (38.1) Can Height
BACC65AA/AB, EPXB2
527-281
Page E-4



EMI Banding Backshell
1.0" (38.1) Can Height
BACC65AA/AB, EPXB2
527-410
Page E-5



EMI Banding Backshell
with Saddle Clamps
BACC65AA/AB, EPXB2
527-254
Page E-6

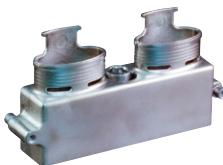


EMI Banding Backshell
1.56" (39.6) Can Height
EPXB2
527-268
Page E-7



EMI Banding Backshell
End Entry
EPXB2
527-531
Page E-8

**EN4165
SIM
Backshells**



EMI Banding Backshell
SIM AD 6 4 Module
527-495
Page E-9



EMI Banding Backshell
Snap-Together Composite
SIM AD 6 Four Module
527-542
Page E-10



EMI Banding Backshell
Snap-Together Composite
SIM AD 6 Two Module
527-586
Page E-11

**BACC65BU/CA
EN4165
Clampshells**



Clampshell, Single Module
EN4165, BACC65BU/CA
527-407
Page E-12



Clampshell, Single
Extended Length Module
EN4165, BACC65BU/CA
527-493
Page E-13