

AEROSPACE - GRADE
RECTANGULAR
CONNECTOR
BACKSHELLS AND
ACCESSORIES



Comprehensive range of material and plating classes available. See individual how-to-order pages for recommended finish codes.

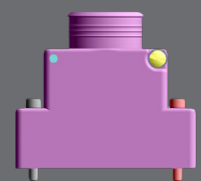
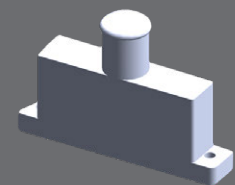
Glenair Accessory Material and Finish Code Performance

Code	Material	Finish	Specification	Salt Spray Hours	Temperature Range (°C)	Conductive Yes/No	RoHS Yes/No
C	Aluminum	Anodize, Black	AMS-A-8625	500	-65 to +200	No	Yes
JF	Aluminum	Gold Chromate over Cad over Nickel	AMS-QQ-P-416	1000	-65 to +200	Yes	No
G2	Aluminum	Anodize, Hardcoat, Undyed	AMS-A-8625	500	-65 to +200	No	Yes
M	Aluminum	Electroless Nickel	AMS-C-26074	96	-65 to +200	Yes	Yes
MA	Aluminum	Electroless Nickel, Matte Finish	AMS-C-26074	96	-65 to +200	Yes	Yes
ME	Aluminum	Electroless Nickel, Heavy	AMS-C-26074	96	-65 to +200	Yes	Yes
MN	Aluminum	MegaNickel	AMS-C-26074	1000	-65 to +200	Yes	Yes
MT	Aluminum	Nickel-PTFE	AMS2524	500	-65 to +175	Yes	Yes
NF	Aluminum	Cadmium, Olive Drab Chromate	AMS-QQ-P-416	1000	-65 to +175	Yes	No
TZ	Aluminum	Tin-Zinc	AMS2434	1000	-65 to +175	Yes	Yes
XB	Composite	Unplated, Black Color	N/A	2000	-65 to +200	No	Yes
XM	Composite	Electroless Nickel	AMS-C-26074	2000	-65 to +200	Yes	Yes
XMT	Composite	Nickel-PTFE	AMS2524	2000	-65 to +175	Yes	Yes
XW	Composite	Cadmium, Olive Drab Chromate	AMS-QQ-P-416	1000	-65 to +175	Yes	No
Z1	Stainless Steel	Passivated	AMS-QQ-P-35	1000	-65 to +200	Yes	Yes
ZL	Stainless Steel	Electrodeposited Nickel	AMS-QQ-N-290	500	-65 to +200	Yes	Yes
ZM	Stainless Steel	Electroless Nickel	AMS-C-26074	1000	-65 to +200	Yes	Yes
ZMT	Stainless Steel	Nickel-PTFE	AMS2524	1000	-65 to +175	Yes	Yes
ZR	Aluminum	Zinc-Nickel, Black Chromate	AMS2417	1000	-65 to +175	Yes	Yes
ZU	Stainless Steel	Cadmium, Black Chromate	AMS-QQ-P-416	1000	-65 to +175	Yes	No

For new design applications, Glenair lists recommended material and plating codes on the how-to-order pages for each connector backshell series. Additional material and plating types, however, are available. Glenair can support every required material and plating type necessary to ensure compatibility with customer connectors, shielding, and hardware. Consult this connector accessory material and finish master table and/or the factory for non-standard, legacy, or unusual plating requirements.

Go to 3dparts.glenair.com for 3D part models in all popular CAD formats for the complete range of Glenair backshells and connector accessories.

GLENAIR
3D Parts
Models



3dparts.glenair.com