

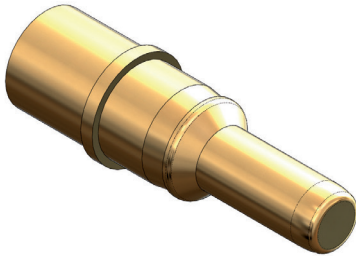


## Series 921 Super ITS™ Connectors and Accessories

### Pin Crimp Contacts

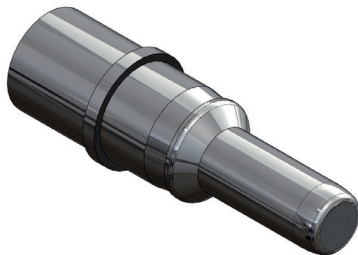
### Series 921 Super ITS™ Pin Crimp Contacts

Series 921 Super ITS™ contacts for size #16 through Size #2/0 wire. Copper alloy with silver or gold plating. Terminate to wire with standard crimp tools. Contacts are snap-in, rear-release. Use in Series 921 Super ITS™ connectors.



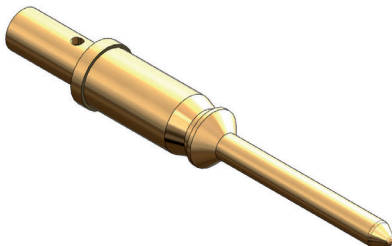
Pin contact with silver plating. For plating thickness, please consult MATERIALS AND FINISHES TABLE on Page 6. Highly conductive silver plating is ideal for high current applications.

Pin contact with gold plating for improved protection from corrosive environments. For plating thickness, please consult MATERIALS AND FINISHES TABLE on Page 6.



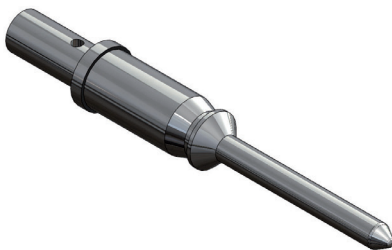
#### PIN CRIMP CONTACTS TABLE

Contact Size	Wire Size	Finish	Pin Contact Part Number
16	16, 20	Silver	921-16-PCG10
		Gold	921-16-PCG117
12	12, 14	Silver	921-12-PCG10
		Gold	921-12-PCG117
8	8	Silver	921-8-PCG10
	10		921-10-PCG10
4	4	Silver	921-4-PCG10
1/0	1/0	Silver	921-0-PCG10
	2/0	Silver	921-2-0-PCG10

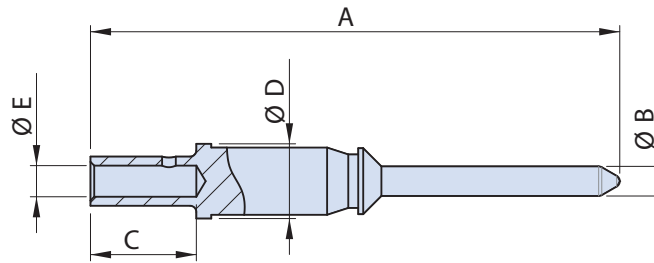


#### PIN CONTACT CURRENT RATINGS AND RESISTANCE

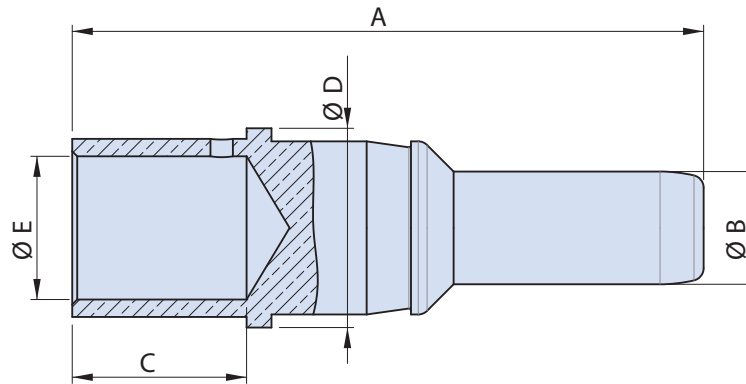
Contact and Wire Size	Current Rating at 20° C (Amperes)	Current Rating at 80° C (Amperes)	Max. Contact Resistance (milliohms)
16	25	15	6.0
12	50	28	3.0
8	90	70	1.0
4	160	130	0.5
1/0	300	250	0.3
2/0	330	280	0.3



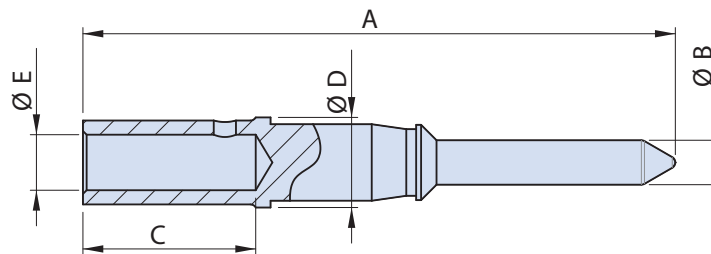
## Pin Crimp Contacts



Part Number	Contact Size	A [mm]	øB [mm]	C [mm]	øD [mm]	øE [mm]
921-16-PC	16	42.5	1.58	6.35	3.7	1.7
921-12-PC	12	42.5	2.38	8.5	6.0	2.5



Part Number	Wire Size	A [mm]	øB [mm]	C [mm]	øD [mm]	øE [mm]
921-4-PC	4	48.9	5.7	12.2	10	7.1
921-6-PC	6	48.9	5.7	12.2	10	5.8
921-0-PC	1/0	50.7	9.05	14.0	16.0	11.5
921-2-0-PC	2/0	56.7	9.05	20.0	17.0	12.5



Part Number	Wire Size	A [mm]	øB [mm]	C [mm]	øD [mm]	øE [mm]
921-10-PC	10	48.9	3.6	12.2	7.3	3.6
921-8-PC	8	48.9	3.6	12.2	7.3	4.5

