

Selection Guide: Environmental and Hermetic Class



SuperNine RF

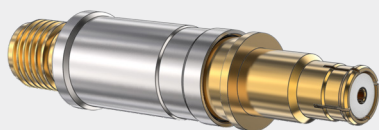
Multi-Port RF Circular Connectors

- Twenty-two MIL-STD-1560 layouts for size #8, #12, or #16 RF contacts (sold separately)
- Unibody connector design with common ground plane
- Environmental
- EMI spring on plugs
- Hermetic feedthru available

CONSTRUCTION

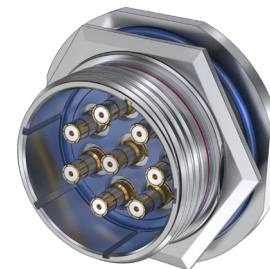
- Shell: aluminum or stainless steel
- Seal/Grommet: fluorosilicone blend
- Ground Spring: copper alloy

G-Link^{RF} Contacts



18 GHz G-Link^{RF} contacts have a BMB-style mating end and a female SMA interface on the back end. Attach a standard SMA plug cable to the G-Link RF contact.

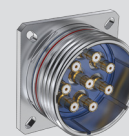
High-Performance, "Better-than-QPL" MIL-DTL-38999 Series III. One to 29 contacts, Size 8, 12, or 16. 233-290 connectors have machined aluminum or stainless steel shells and fluorosilicone grommet for environmental protection. Plugs feature a copper alloy ground spring for EMI protection. Twenty-two contact layouts available in eight different shell sizes. Supplied without contacts, order #8 BMB, #12 SMPM, or #16 SMPS contacts separately.



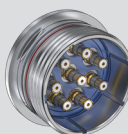
Connector Selection Guide



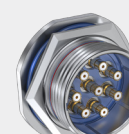
233-290-G6
Plug, EMI Spring
Page 19



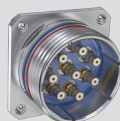
233-290-00
Wall-Mount Receptacle
Page 19



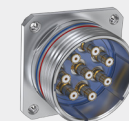
233-290-05
In-Line Receptacle
Page 20



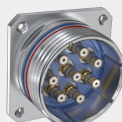
233-290-07
Jam Nut Receptacle
Page 20



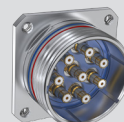
233-290-CS
Wall Mount Receptacle, Standard
Clinch Nuts
Page 21



233-290-CM
Wall Mount Receptacle, Metric
Clinch Nuts
Page 21



233-290-HS
Wall Mount Receptacle,
Standard Helicoils
Page 21



233-290-HM
Wall Mount Receptacle,
Metric Helicoils
Page 21



2333-2002
Connector Receptacle Code
Red Lightweight Hermetic
Page 22