

Selection Guide

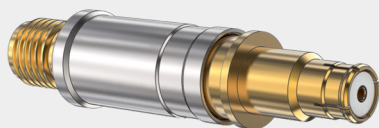
Series 806 Multi-Port RF Circular Connectors

- Mil-spec performance, micro miniature package
- Eighteen layouts for size #8, #12, or #16 RF contacts (sold separately)
- Rugged aluminum or stainless steel shells
- Environmental
- Scoop-proof interface
- EMI spring on plugs
- Snap-in, rear-release contacts
- Hermetic

CONSTRUCTION

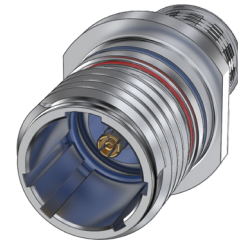
- Shell: aluminum or stainless steel
- Seal/Grommet: fluorosilicone blend
- Ground Spring: copper alloy

G-Link^{RF} Contacts



18 GHz G-Link^{RF} contacts have a BMB-style mating end and a female SMA interface on the back end. Attach a standard SMA plug cable to the G-Link RF contact.

One to 29 contacts, Size 8, 12, or 16. Series 806 RF connectors have machined aluminum or stainless steel shells and fluorosilicone grommet for environmental protection. Plugs feature a copper alloy ground spring for EMI protection. Eighteen contact layouts available in eleven different shell sizes. Supplied without contacts, order #8 BMB, #12 SMPM, or #16 SMPs contacts separately.



Connector Selection Guide



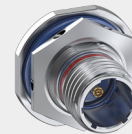
806-072
 Cable Plug
 (Socket Contacts)
 Page 55



806-073
 Wall-Mount Receptacle
 (Pin Contacts)
 Page 57



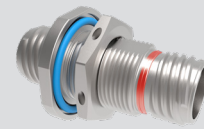
806-079
 In-Line Receptacle
 (Pin Contacts)
 Page 59



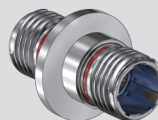
806-080
 Jam Nut Receptacle
 (Pin Contacts)
 Page 61



806-083-02
 Hermetic Bulkhead Feedthru,
 Panel Mount
 Page 63



806-083-07
 Hermetic Bulkhead Feedthru,
 Jam Nut Mount
 Page 63



806-083-13
 Hermetic Bulkhead Feedthru,
 Weld Mount
 Page 63

SERIES 806 MULTI-PIN RF CONNECTORS