

Selection Guide

SuperNine

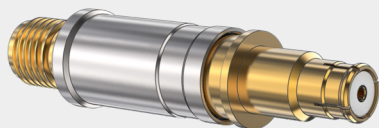
Multi-Port RF Circular Connectors

- Fifteen MIL-STD-1560 layouts for size #8, #12, or #16 RF contacts (sold separately)
- Rugged aluminum or stainless steel shells
- Environmental
- Scoop-proof interface
- EMI spring on plugs
- Snap-in, rear-release contacts

CONSTRUCTION

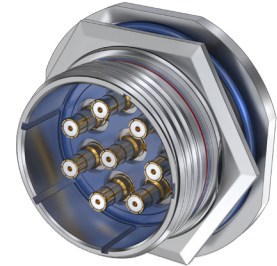
- Shell: aluminum or stainless steel
- Seal/Grommet: fluorosilicone blend
- Ground Spring: copper alloy

G-Link^{RF} Contacts



18 GHz G-Link^{RF} contacts have a BMB-style mating end and a female SMA interface on the back end. Attach a standard SMA plug cable to the G-Link RF contact.

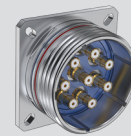
One to 29 contacts, Size 8, 12, or 16. 233-290 connectors have machined aluminum or stainless steel shells and fluorosilicone grommet for environmental protection. Plugs feature a copper alloy ground spring for EMI protection. Fifteen contact layouts available in eight different shell sizes. Supplied without contacts, order #8 BMB, #12 SMPM, or #16 SMPS contacts separately.



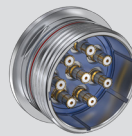
Connector Selection Guide



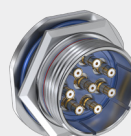
233-290-G6
 Plug, EMI Spring
 (Socket Contacts)
 Page 50



233-290-00
 Wall-Mount Receptacle
 (Pin Contacts)
 Page 50



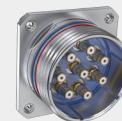
233-290-05
 In-Line Receptacle
 (Pin Contacts)
 Page 51



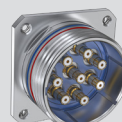
233-290-07
 Jam Nut Receptacle
 (Pin Contacts)
 Page 51



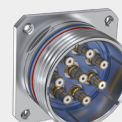
233-290-CS
 Wall Mount Receptacle, Standard
 Clinch Nuts (Pin Contacts)
 Page 52



233-290-CM
 Wall Mount Receptacle, Metric
 Clinch Nuts (Pin Contacts)
 Page 52



233-290-HS
 Wall Mount Receptacle, Standard
 Helicoils (Pin Contacts)
 Page 53



233-290-HM
 Wall Mount Receptacle, Metric
 Helicoils (Pin Contacts)
 Page 53

SUPERNINE MULTI-PIN RF CONNECTORS