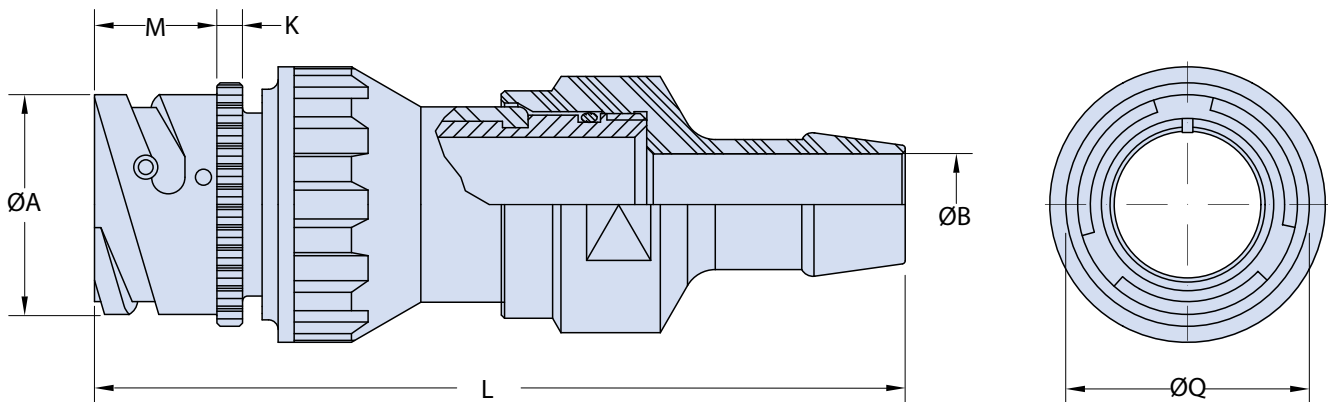
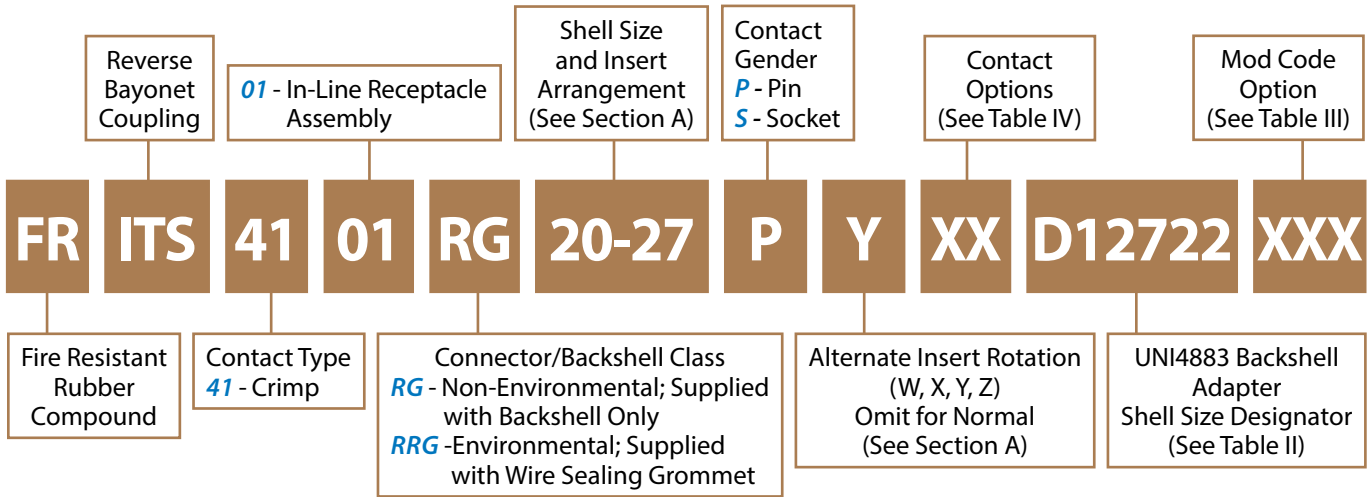




**ITS 4101 RG D1 and ITS 4101 RRG D1
Cylindrical In-Line Receptacle Assembly
with Rubber-Coated Backshell
for Termination of UNI4883 Rubber Conduit**



Application Notes

1. In-line receptacle assembly with rear backshell for termination of UNI41883 type rubber conduit.
2. RG - Non-Environmental; grommet not supplied.
RRG - Environmental; supplied with wire sealing grommet.
3. Standard materials configuration consists of aluminum alloy.
4. Standard contact material consists of copper alloy with silver plating or gold plating.

**ITS 4101 RG D1 and ITS 4101 RRG D1
Cylindrical In-Line Receptacle Assembly
with Rubber-Coated Backshell
for Termination of UNI4883 Rubber Conduit**



TABLE I: DIMENSIONS

Shell Size	ØA +0.2 -0.1	ØB	K ±0.2	L Max.	M +0.4 -0	ØQ ±0.1
14 S	24.5	See Table III Below	3.2	107	14.2	28.8
16 S	27.2		3.2	115	14.2	30.5
16	27.2		3.2	115	19.0	30.5
18	30.7		4.0	122	19.0	33.8
20	34.0		4.0	131	19.0	36.9
22	37.3		4.0	131	19.0	39.5
24	40.9		4.0	153	20.6	43.9
28	46.7		4.0	153	20.6	48.4
32	53.4		4.0	146	22.2	56.0
36	59.6		4.0	164	22.2	62.4
40	65.5		4.0	169	22.2	68.6

TABLE II: BACKSHELL DIMENSIONS RUBBER CONDUIT

Shell Size	In accordance with UNI 4883		ØB ±0.1
	Ø Min.	Ø Max.	
14 S	12.0	17.0	11.0
18	15.0	20.0	13.3
20 - 22	12.0	17.0	11.0
20 - 22	18.0	23.0	15.8
20 - 22	22.0	27.0	20.0
20 - 22	25.0	30.0	22.0
20 - 22	35.0	40.0	32.0
24 - 28	20.0	25.0	15.0
24 - 28	22.0	27.0	20.0
24 - 28	25.0	30.0	22.0
24 - 28	28.0	33.0	26.0
24 - 28	30.0	35.0	25.0
24 - 28	35.0	40.0	32.0
24 - 28	45.0	50.0	42.0
32	25.0	30.0	22.0
32	30.0	35.0	25.0
32	35.0	40.0	32.0
32	40.0	45.0	38.0
36	30.0	35.0	25.0
36	35.0	40.0	32.0
40	40.0	45.0	38.0
40	45.0	50.0	42.0
40	50.0	55.0	47.0

TABLE III: MODIFICATION CODES

STANDARD MATERIAL AND FINISH (*)		
Sym	Description	RoHS
	Omit for Aluminum/ Cadmium Olive Drab	
F6	Aluminum/ Black Electrodeposited Paint	✓
F7	Aluminum/ Black Zinc Nickel	✓
F11	Aluminum/ Electroless Nickel	✓

TABLE IV: MODIFICATION CODES

CONTACT OPTIONS	
Sym	Description
B0	Connector without Contacts**
B1	Connector with Gold Plated Contacts
Omit for standard version (Silver plated)	

(*) Apply to components without rubber covering only.
For further finish options, please contact the factory.

(**) Crimp Contacts Only