

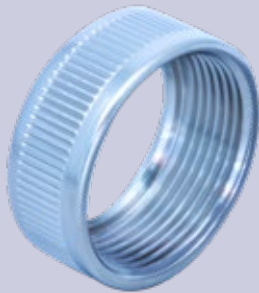
S9407-AB-HBK-010

Conduit Systems for Shipboard Electromagnetic Shielding

GR2129 Ferrule and coupling nut

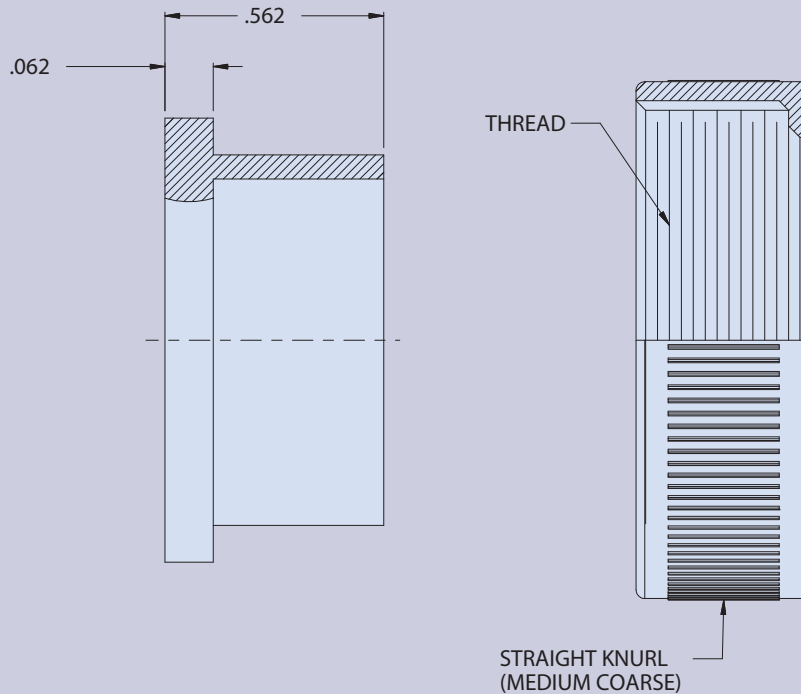


FERRULE AND COUPLING NUT FOR FLEXIBLE CONDUIT IAW S9407-AB-HBK-010 REV 2, GR2129



How To Order		
Sample Part Number	GR2129	-EM08
Basic Part Number	Ferrule and coupling nut	
Conduit Part No.	EM02, EM03, EM04, EM05, EM06, EM08, EM10, EM12, EM16, EM20, EM24	

GR2000



NOTE

EM06 Assembly couples 3/4-Inch conduit to the Stuffing Tube Adapter, MX-7637/U.

MATERIAL / FINISH

Ferrule - 300 Series SST / Passivated

Coupling Nut - Mild Carbon Steel AISI Type B1113 IAW Fed-STD-66 / Electroless nickel IAW AMS 2404C