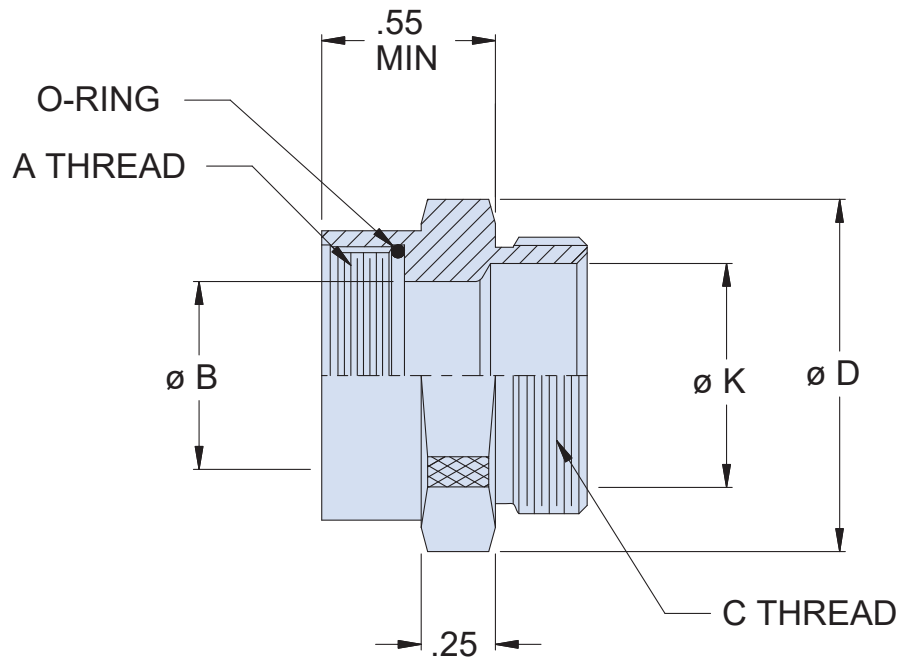
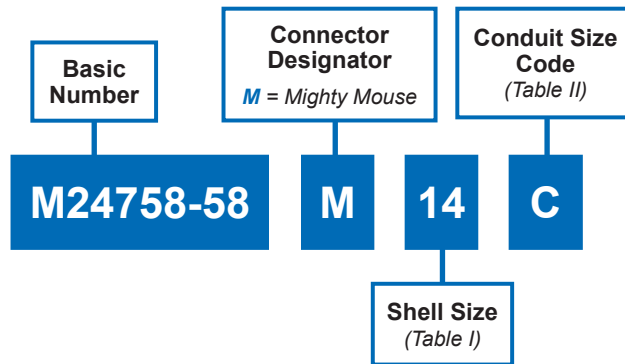


MIL-PRF-24758-58
Adapter for Series 80 Mighty Mouse Connectors
To M24758-2, -3, or -4 Conduit Fittings

A



MIL-PRF-24758-58
Adapter for Series 80 Mighty Mouse Connectors
To M24758-2, -3, or -4 Conduit Fittings



MIL-PRF
24758A

A

TABLE I: Order No., Shell Size, Thread, Dimensions and Max Conduit Size Code

DASH NO.	SHELL SIZE REF		A THREAD CLASS - 2B	B DIA REF	D DIA MAX	MAX CONDUIT SIZE CODE SEE NOTE 3
	800 / 801 803 / 804	805				
05	05	N/A	1/4-32 UNEF	.172 (4.37)	.58 (14.73)	A
06	06	N/A	5/16-32 UNEF	.234 (5.94)		
11	N/A	08	3/8-32 UNEF	.266 (6.76)	.73 (18.54)	J
07	07	09	7/16-28 UNEF	.325 (8.25)		
08	08	10	1/2-28 UNEF	.385 (9.78)	.87 (22.10)	B
09	09	11	9/16-24 UNEF	.445 (11.30)		
10	10	12	5/8-24 UNEF	.512 (13.00)	1.02 (25.91)	K
12	11/12 /13	N/A	11/16-24 UNEF	.594 (15.09)	1.16 (29.46)	C
13	N/A	15	3/4-20 UNEF	.625 (15.88)		
14	14/15 16/17	18/19	15/16-20 UNEF	.812 (20.62)	1.52 (38.61)	D
17	21	23	1 3/16-18 UNEF	1.057 (26.85)	1.88 (47.75)	E

TABLE II: Conduit Size Code

CONDUIT SIZE CODE	C CLASS - 2A THREAD	K DIA MIN.
A	.438-28 UNEF	.245 (6.22)
B	.688-24 UNEF	.495 (12.57)
C	.938-20 UNEF	.745 (18.92)
D	1.250-18 UNEF	.995 (25.27)
E	1.563-18 UNEF	1.245 (31.62)
J	.563-24 UNEF	.370 (9.40)
K	.813-20 UNEF	.620 (15.75)

APPLICATION NOTES

1. Assembly identified with manufacturer's name and part number, space permitting.
2. M24758-58 adapts Series 80 Mighty Mouse connectors to M24758-2, M24758-3, or M24758-4 conduit fittings.
3. Consult factory for availability when Max Conduit Size Code is exceeded.
4. Material / Finish:
Adapter - 316L SST/Electroless Nickel, matte finish
O-Ring - Silicone/N.A.
5. Metric dimensions (mm) are indicated in parentheses.