

061-013

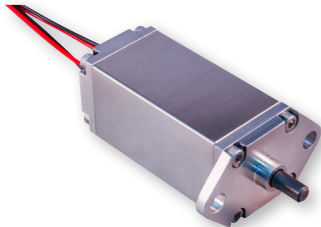
Medium-duty pin pushers and pullers

50 lb. pull force

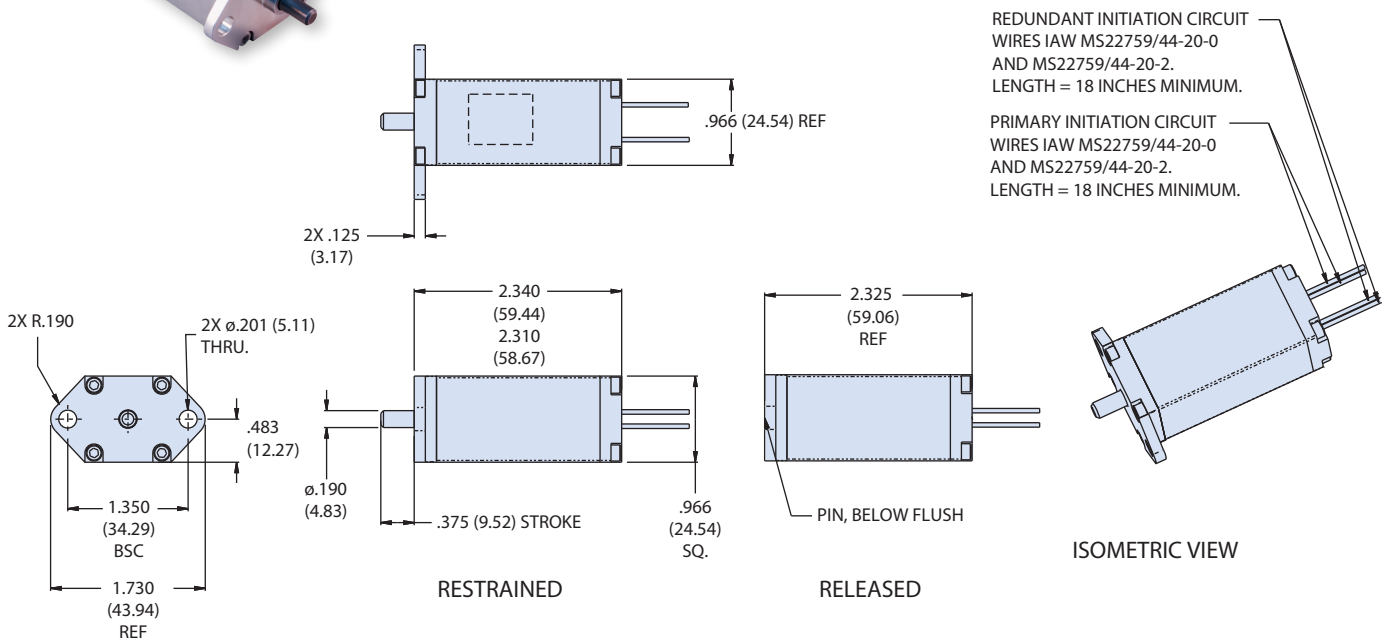
Electrically redundant



ELECTRICALLY REDUNDANT PIN PULLER MECHANISM, MEDIUM DUTY



How To Order		
Sample Part No.	061	-013
Basic Part No.	Medium-Duty Pin Puller	
Dash No.	Redundant Circuit	



NOTES

- Unit is identified with Glenair name, CAGE code, part number, and date code, space permitting. Primary initiation circuit identified with "P" and redundant with "R".
- Pull force: 50 lbs. (222 N)
- Full qualification pending
- Reference Glenair P/N 060-711 for refurbishment initiator
- Metric threads available, consult factory for options

Physical characteristics	
Mass	145.8 grams approximate weight
Material list	IAW MSFC-STD-3029
Device features	
Redundant initiation	2 initiation points
Field refurbishable	Initiator can be replaced in less than 15 minutes by trained personnel
Packaging	External housing typically supplied with two mounting points. Custom housings and mountings available
Connectorization	Standard design supplied with wire inputs. Connectorized versions available
*Size callout based on the bolt size to be used. Metric thread also available. Consult factory for qualification test report.	



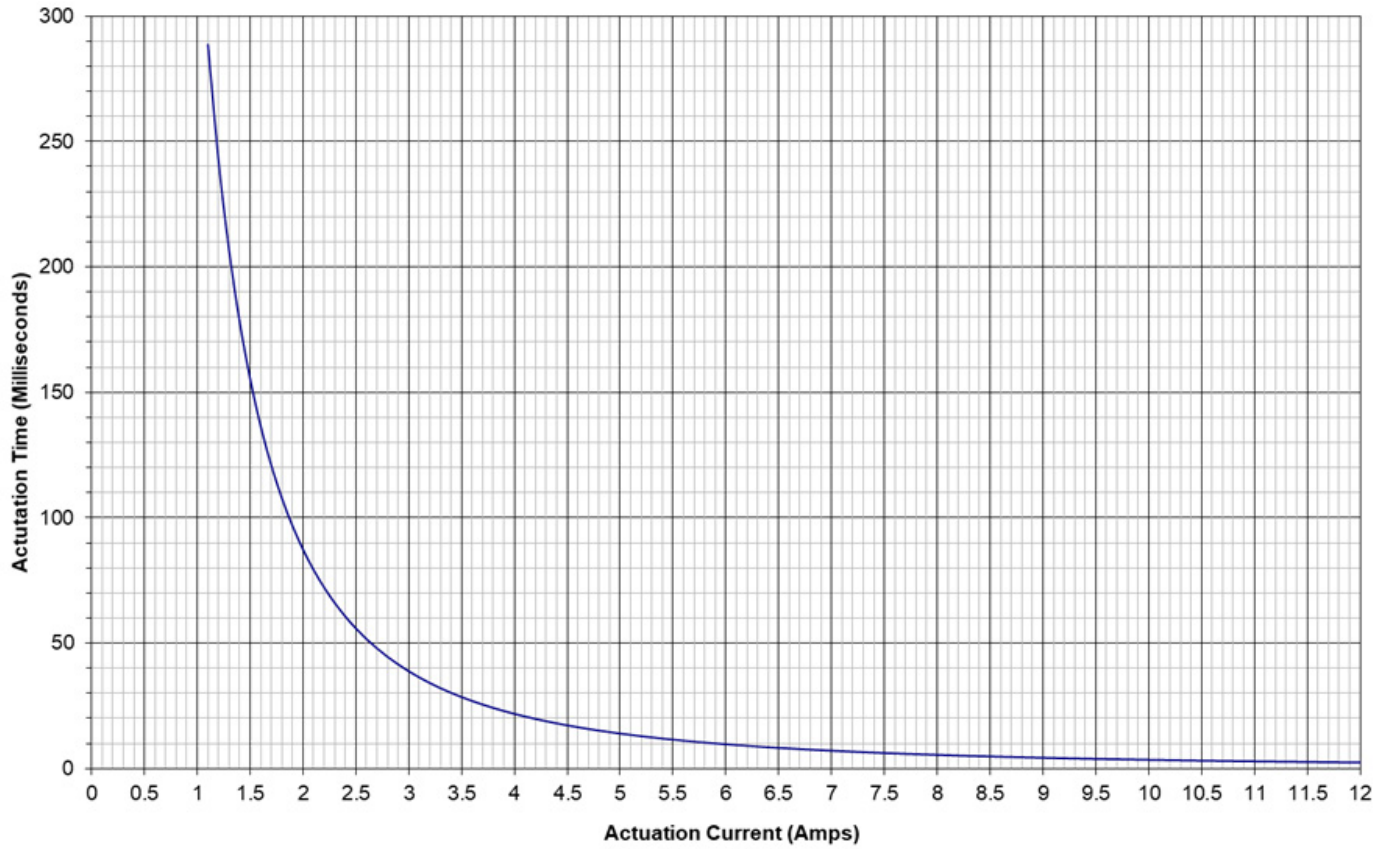
061-013

Medium-duty pin pushers and pullers

50 lb. pull force,
electrically redundant



Actuation Curve for Pin Puller Mechanism



A