



# REVERSE-BAYONET QUICK-DISCONNECT ITS-NG™ Nuclear-Grade Containment Area Class 1E Connectors



## How to Order



## Super ITS-NG reverse-bayonet crimp removable contact connector

Super ITS NG stainless steel connectors are ideally suited for existing plant refurbishment. The reverse-bayonet design ensures operation under high shock and vibration, while offering IP67 sealing. Connectors are available with silver (standard) or gold plated crimp, solder cup, or PC tail contacts.

How To Order	
SAMPLE PART NUMBER	NGITS G 41 06 SP 18-10 S Y B1 N54C FK1
Series	NGITS = Nuclear grade connectors
Grounding Fingers	G = Plug grounding fingers (plug only)
Contact Type	31 = Solder 41 = Crimp
Shell Style	See shell styles table
Class	See class table
Mounting Holes	FP = Through-holes; omit for threaded holes Option only required for wall mount shell style 030
Shell Size/Insert Arrangement	IAW MIL-DTL-5015, see Appendix
Contact Gender	P = Pin S = Socket
Polarization	W, X, Y, Z; refer to polarization (insert rotation) tables in Appendix of this catalog
Contact Options	See contact options table
Accessory Code	N0 = No accessory; see accessory options table and reference shell style/accessory code matrix table for availability
Material / Finish	FK1 = Material AISI 316L Stainless Steel, Passivated

SUPER ITS: HARSH ENVIRONMENT

Shell Style / Environmental Class Matrix			
Shell Style	Classes		
	R	SP	GS
NGITS 00	✓	✓	
NGITS 01	✓	✓	
NGITS 030	✓	✓	
NGITS 08	✓	✓	✓

Shell Style / Accessory Matrix			
Shell Style	Classes		
	R	SP	GS
NGITS 00	✓	✓	
NGITS 01	✓	✓	
NGITS 030	✓	✓	
NGITS 08	✓	✓	✓

Mounting Hole Diameter		
Shell Size	RPM Metric Thread Class 6H	FPM and RPM Thru-Hole Diameter +0.1 (0.004) (0) 0.000
10 SL	M4	3.2 (0.13)
14 S	M4	3.2 (0.13)
16 S	M4	3.2 (0.13)
16	M4	3.2 (0.13)
18	M4	3.2 (0.13)
20	M4	3.2 (0.13)
22	M4	3.2 (0.13)
24	M4	3.7 (0.15)
28	M5	3.7 (0.15)
32	M5	4.3 (0.17)
36	M5	4.3 (0.17)
40	M5	4.3 (0.17)

### NOTES

1. Shell styles 03, 030 and 038 may be ordered with threaded mounting hole or through-hole mounting. See Mounting Hole Dimensions table for details
2. Backshell is included when no Accessory Code Option Designator is omitted.
3. BR accessories require additional ordering information; see BR Code Table for minimum and maximum cable diameters and code
4. PG accessories require additional ordering information; see PG Code Table for thread options
5. FM accessories require additional ordering information; see FM Code Table for thread options

A



# REVERSE-BAYONET QUICK-DISCONNECT ITS-NG™ Nuclear-Grade Containment Area Class 1E Connectors Part Number Options and Dimensions



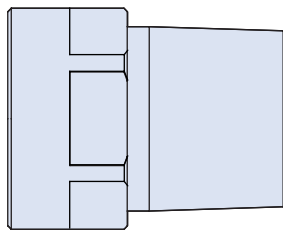
Shell Style Options	
Sym	Description
00	Front panel mount, wall mount receptacle
01	Inline cable receptacle
030 <sup>1</sup>	Rear panel mount, wall mount receptacle and accessory threads
06	Inline cable plug connector

Class Options	
Sym	Description
R <sup>2</sup>	Environmental backshell with wire sealing grommet
SP	Environmental connector and EMI/RFI backshell with wire sealing grommet and cable shield termination

Contact Options	
Sym	Description
B0	Connector without contacts
B1	Connector with gold plated contacts
Omit for standard version (silver plated)	

Accessory Options	
Sym	Description
N5	Threaded Adapter and Cable Clamp for Jacketed Cables
N5M	Threaded Adapter and Cable Gland for Jacketed Cables
ZLS	Threaded Adapter and Cable Gland for Shielded Cables
NPT	Threaded Adapter and Cable Gland for Shielded Cables

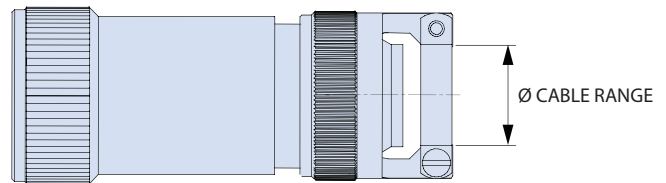
## NPT ADAPTER



Shell Size	Cable Gland Type
10 SL	1/2 NPT
14 S	1/2 NPT
16 S	1/2 NPT
16	1/2 NPT
18	1/2 NPT
20	3/4 NPT

Shell Size	Cable Gland Type
22	3/4 NPT
24	1 NPT
28	1 NPT
32	1 - 1/2 NPT
36	1 - 1/2 NPT
40	1 - 1/2 NPT

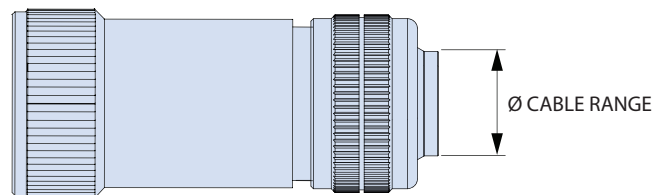
## N5 CABLE CLAMP AND EXTENDED BACKSHELL



Shell Size	Ø Cable Range	
	Min.	Max
N5-4C	2.4 (0.09)	7.9 (0.31)
N5-6C	5.8 (0.23)	11.1 (0.44)
N5-8C	8.0 (0.31)	13.4 (0.53)
N5-10C	9.6 (0.38)	15.8 (0.62)
N5-12C	11.3 (0.44)	19.0 (0.75)
N5-16C	15.5 (0.61)	23.8 (0.94)
N5-20C	23.4 (0.92)	31.7 (1.25)
N5-24C	23.4 (0.92)	35.0 (1.38)
N5-28C	29.9 (1.18)	41.2 (1.62)

Shell Size	Cable Clamp Type
10 SL	4C
14 S	6C, 4C
16 S	8C, 6C, 4C
16	8C, 6C, 4C
18	10C, 8C, 6C, 4C
20	12C, 10C, 8C, 6C, 4C
22	12C, 10C, 8C, 6C, 4C
24	16C, 12C, 10C, 8C, 6C
28	16C, 12C, 10C, 8C, 6C
32	20C, 16C, 12C, 10C, 8C
36	24C, 20C, 16C, 12C, 10 C
40	28C, 24C, 20C, 16C, 12 C

## N5M CABLE GLAND AND EXTENDED BACKSHELL



Shell Size	Ø Cable Range	
	Min.	Max
N5M-4C	2.4 (0.09)	7.9 (0.31)
N5M-6C	5.8 (0.23)	11.1 (0.44)
N5M-8C	8.0 (0.31)	13.4 (0.53)
N5M-10C	9.6 (0.38)	15.8 (0.62)
N5M-12C	11.3 (0.44)	19.0 (0.75)
N5M-16C	15.5 (0.61)	23.8 (0.94)
N5M-20C	23.4 (0.92)	31.7 (1.25)
N5M-24C	23.4 (0.92)	35.0 (1.38)
N5M-28C	29.9 (1.18)	41.2 (1.62)

Shell Size	Cable Gland Type
10 SL	4C
14 S	6C, 4C
16 S	8C, 6C, 4C
16	8C, 6C, 4C
18	10C, 8C, 6C, 4C
20	12C, 10C, 8C, 6C, 4C
22	12C, 10C, 8C, 6C, 4C
24	16C, 12C, 10C, 8C, 6C
28	16C, 12C, 10C, 8C, 6C
32	20C, 16C, 12C, 10C, 8C
36	24C, 20C, 16C, 12C, 10 C
40	28C, 24C, 20C, 16C, 12 C

SUPER ITS: HARSH ENVIRONMENT

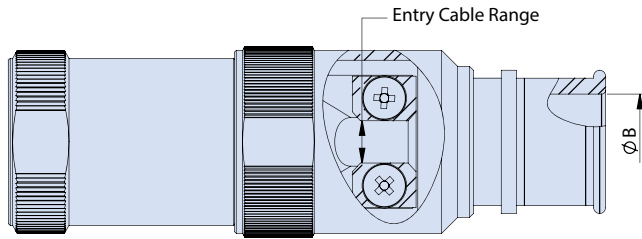
A



# REVERSE-BAYONET QUICK-DISCONNECT ITS-NG™ Nuclear-Grade Containment Area Class 1E Connectors Part Number Options

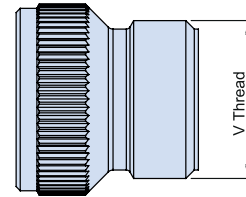


## ZLS EMI/RFI BANDING PLATFORM ADAPTER WITH INTERNAL STRAIN RELIEF



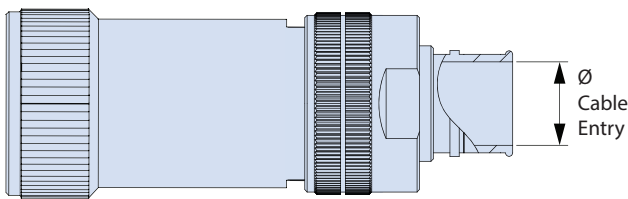
Shell Size	Entry Cable Range*	Entry Size
10 SL	01	01/02
14S	02	02/03
16S	03	5/6/2007
16	03	5/6/2007
18	04	5/6/2007
20	05	08/09/10/11
22	05	08/09/10/11
24	06	11/12/2013
28	06	11/12/2013
32	07	15/16/17
36	08	17/18/19
40	09	20/21/22

## CLASS R BACKSHELL



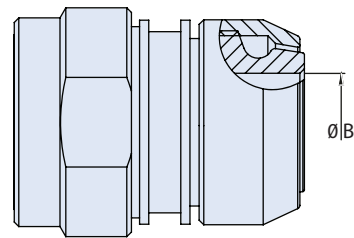
Shell Size	V Thread
10 SL	0.6250 - 24UNEF 2A
14 S	0.7500 - 20UNEF 2A
16 S	0.875 - 20UNEF 2A
16	0.875 - 20UNEF 2A
18	1.0000 - 20UNEF 2A
20	1.1875 - 18UNEF 2A
22	1.1875 - 18UNEF 2A
24	1.4375 - 18 UNEF 2A
28	1.4375 - 18UNEF 2A
32	1.7500-18UNS 2A
36	2.0000 - 18UNS 2A
40	2.2500 - 16UN 2A

## ZL EMI/RFI BANDING PLATFORM ADAPTER



Dimensions		Cable Entry		Cable Entry	
Shell Size	Entry Size*	Entry Size	ØB	Entry Size	ØB
10 SL	1-6	ZL01	3.2 (0.13)	ZL13	22.2 (0.87)
14 S	2-8	ZL02	4.8 (0.19)	ZL14	23.8 (0.94)
16 S	3-10	ZL03	6.4 (0.25)	ZL15	25.4 (1.00)
16	3-10	ZL04	7.9 (0.31)	ZL16	27 (1.06)
18	4-12	ZL05	9.5 (0.37)	ZL17	28.6 (1.13)
20	4-14	ZL06	11.1 (0.44)	ZL18	31.8 (1.25)
22	6-16	ZL07	12.7 (0.50)	ZL19	34.9 (1.37)
24	6-17	ZL08	14.3 (0.56)	ZL20	38.1 (1.50)
28	8-19	ZL09	15.9 (0.63)	ZL21	41.3 (1.63)
32	8-22	ZL10	17.5 (0.69)	ZL22	44.5 (1.75)
36	10-23	ZL11	19.1 (0.75)	ZL23	47.6 (1.87)
40	10-24	ZL12	20.6 (0.81)	ZL24	50.8 (2.00)

## CLASS SP BACKSHELL



Shell Size	Ø B
10 SL	8.6 (0.34)
14 S	10.7 (0.42)
16 S	13.9 (0.55)
16	13.9 (0.55)
18	15.0 (0.59)
20	18.8 (0.74)
22	22.0 (0.87)
24	25.0 (0.98)
28	28.4 (1.12)
32	34.0 (1.34)
36	40.5 (1.59)
40	49.0 (1.93)

\* Consult factory for additional entry sizes.

SUPER ITS: HARSH ENVIRONMENT

A