

882-018 PCB Plug, Push-Pull QDC Coupling, USB 3.0



USB 3.0. Ultraminiature. Rear panel jam-nut mount. PCB terminals.

882-005 SuperFly Datalink connectors have one, El Ochito® octaxial contact housing eight pin contacts. Attach to .100 (2.54) maximum thickness panel with spanner nut. PC tail contacts are gold plated or solder dipped in 63/37 tin-lead. Contacts are epoxy-sealed and are non-removable. fluorosilicone O-rings for water-tight seal. *Mates to 882-010, -013, -016, and -039 connectors.*

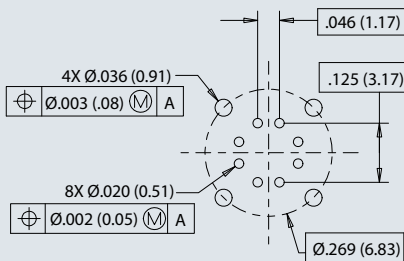
SUPERSPEED

- 5 Gbps
- Low-dielectric insulators

HARSH ENVIRONMENT

- EMI protection
- Water ingress
- Shock and vibration

Recommended PC Board Layout



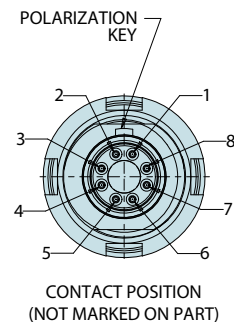
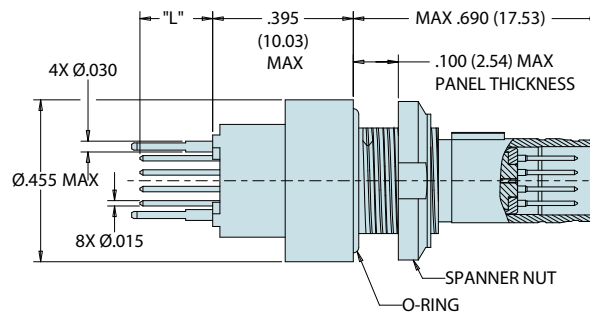
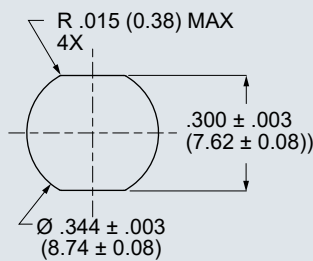
RECOMMENDED PCB LAYOUT
 CONNECTOR SIDE

SEE AN0002 FOR OPTIMAL PERFORMANCE
 (MAINTAIN Ø.036 ON Ø.269 FOR GROUND PINS)

How To Order Panel Mount PCB Plug for USB 3.0

Sample Part Number	882-018	-M	G	-.125
Product	882-018 = Panel Mount PC Tail Plug			
Shell Finish	M = Electroless Nickel (aluminum shell) MT = Nickel-PTFE (aluminum shell) ZR = Black Zinc-Nickel (aluminum shell) Z2 = Gold (aluminum shell) ZMT = Nickel-PTFE (stainless steel shell)			
PC Tail Finish	S = Solder dip, 63/37 tin-lead G = Gold			
PC Tail Length	.080 = .080 in. (2.03 mm.) .175 = .175 in. (4.45 mm.)	.125 = .125 in. (3.18 mm.)	.200 = .200 in. (5.08 mm.)	

Recommended Panel Cutout



Specifications

- **Operating temp.:** -65° to +175°C
- **Impedance:** 90 ohms
- **DWV:** 500 Vrms unmatd
- **Current Rating:** 1.5 A
- **IR:** 1000 MΩ min at 500 VAC.
- **Durability:** 2000 mating cycles
- **Ingress protection:** IP67

Construction

- **Shell, jam-nut:** aluminum alloy or SST
- **Insulators:** high-grade rigid dielectric
- **Contacts:** copper alloy, 50 microinches gold over nickel plating
- **O-rings:** fluorosilicone
- **Potting:** epoxy

Spanner Nut Tightening Tool

Nickel-plated tool steel, 1/4" sq. drive
 13 - 18 in.-lbs. recommended torque



600-202-E

