

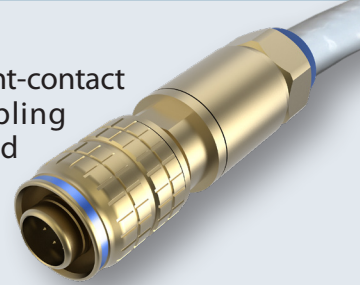
## Introduction

# SUPERFLY DATALINK



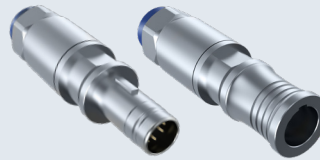
Series 882 Connectors  
and Turnkey Cordsets

**S**uperFly Datalink connectors are ultra-small eight-contact Quick-disconnect (QDC) or threaded-coupling connectors for 10Gb Ethernet or USB 3.0. Designed to withstand harsh aerospace environments, the SuperFly Datalink combines miniaturized design with shielded electrical performance and sealed environmental protection.

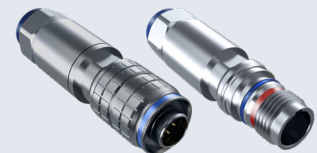


**T**he SuperFly Datalink is the aerospace industry's smallest 10Gb Ethernet/SuperSpeed USB solution. Compatible with flight-grade shielded data cable, these shielded-contact connectors are available as unassembled kits or factory-terminated cordsets. Panel jacks feature fully-sealed printed circuit terminals for vertical or right-angle board mounting.

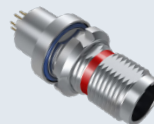
- Selection Guides ..... 2-3**
- Product Features ..... 4**
- Specifications ..... 5**
- Signal Integrity Data..... 6-7**
- Protective Covers.....41**
- Part Number Index .....41**



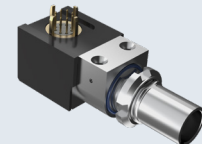
**Quick Disconnect**



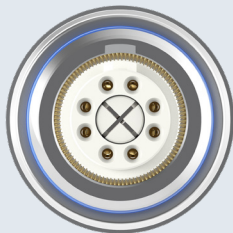
**Threaded Coupling**



**Straight PC Tails**



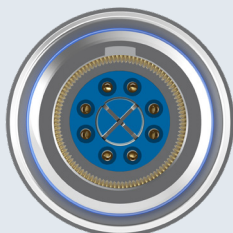
**Right Angle PC Tails**



### SuperFly Datalink White

White dielectric indicates 100 ohm differential impedance for Ethernet protocols. Ideal for 1000BASE-T and 10GBASE-T applications in hostile environments with temperature extremes, high vibration, electromagnetic interference as well as moisture exposure. Compatible with SAE AS6070 flight-grade Ethernet cable. Accepts 24 AWG or 26 AWG. Available with secure threaded coupling or QDC mating.

**See Page 2 for SuperFly Datalink White (10Gb Ethernet) Selection Guide**



### SuperFly Datalink Blue

Blue dielectric indicates 90 ohm differential impedance for SuperSpeed USB. Ideal for USB 3.0 applications in hostile environments with temperature extremes, vibration, electromagnetic interference, as well as moisture exposure. Designed for use with high performance aerospace grade USB 3.0 cable. Available with threaded coupling or push-pull mating.

**See Page 3 for SuperFly Datalink Blue (SuperSpeed USB 3.0) Selection Guide**