

OPTIMIZED
FOR USE WITH

MIL-STAR
HIGH-PERFORMANCE HOOKUP WIRE AND CABLE

 **SuperNine®**

The Advanced-Performance MIL-DTL-38999
Series I Type Bayonet-Lock Connector



"Better-than-QPL" three-point
high-vibration bayonet coupling

SuperNine® is a "Better-than-QPL" MIL-DTL-38999 signature series offering available only from Glenair. Series I scoop-proof bayonet-lock connectors deliver outstanding vibration and shock performance and fast mating / demating.



Also available: SuperNine
Series II low-profile bayonet-lock
connectors

- Scoop-proof design prevents pin damage and short circuits
- Improved, positive-lock, 3-point stainless-steel pin bayonet coupling for outstanding shock and vibration resistance
- Fully tooled for all MIL-STD-1560 insert arrangements
- Contact options include size #22D, #20, #16, and #12 (see High-Speed series for Size #8)
- 500 + mating cycles exceeds MIL-DTL-38999 specification
- Glenair signature Tin-Zinc finish is RoHS compliant and cadmium compatible

ADVANCED PERFORMANCE SuperNine MIL-DTL-38999 Series I



Scoop-proof bayonet-lock connectors with "Better-than-QPL" performance

- Integral banding porch eliminates need for add-on accessories
- Improved plug ground fingers deliver outstanding EMI performance
- Precision-machined key/keyway polarization for reliable mismatching protection
- Expanded receptacle styles include Clinch-nut and Helicoil mounting, and In-line configurations

ENVIRONMENTAL CRIMP-CONTACT AND PC-TAIL CONFIGURATIONS



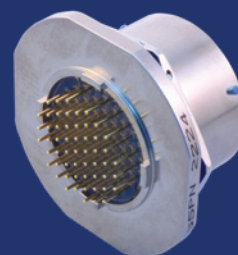
Integrated banding porch



Sav-Con® connector savers and gender-changing adapters



Dual-standoff, metric and standard-threaded, and washout standoff PC-tail receptacles



HIGH-SPEED ENVIRONMENTAL PLUGS AND RECEPTACLES



SpeedLine
High-Speed Protocol Cables

Optimized for Glenair signature El Ocho octaxial high-speed contacts and SpeedLine high-speed protocol cable



WHITE
10GBASE-T

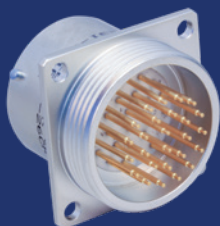


BLUE
USB 3.0



RED
HDMI, SATA, DisplayPort

GLASS-SEAL AND SIGNATURE CODE RED LIGHTWEIGHT HERMETIC CONNECTORS WITH $<1 \times 10^{-7}$ LEAK RATE PERFORMANCE



Wall-mount receptacle



Solder-mount receptacle



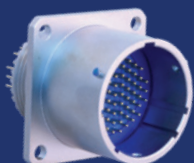
Jam-nut receptacle



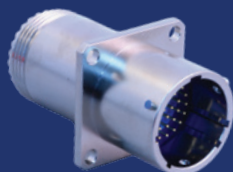
Lightweight CODE-RED hermetic seal connectors



EMI/EMP FILTER CONNECTORS



Wall-mount receptacle with PC tail or solder-cup contacts



Wall-mount receptacle with crimp contacts



Jam-nut receptacles—crimp, solder, or PC-tail contacts



Filter Sav-Con® connector adapters